

Anti-FGF2/Fgf Basic Rabbit Monoclonal Antibody
Catalog # ABO13516**Specification****Anti-FGF2/Fgf Basic Rabbit Monoclonal Antibody - Product Information**

Application	WB, IP, FC
Primary Accession	P09038
Host	Rabbit
Isotype	Rabbit IgG
Reactivity	Human
Clonality	Monoclonal
Format	Liquid

Description

Anti-FGF2/Fgf Basic Rabbit Monoclonal Antibody . Tested in WB, IP, Flow Cytometry applications. This antibody reacts with Human.

Anti-FGF2/Fgf Basic Rabbit Monoclonal Antibody - Additional Information

Gene ID 2247

Other Names

Fibroblast growth factor 2, FGF-2, Basic fibroblast growth factor, bFGF, Heparin-binding growth factor 2, HBGF-2, FGF2, FGFB

Calculated MW

30770 MW KDa

Application Details

WB 1:500-1:2000
IP 1:50
FC 1:50

Subcellular Localization

Secreted. Nucleus. Exported from cells by an endoplasmic reticulum (ER)/Golgi-independent mechanism. Unconventional secretion of FGF2 occurs by direct translocation across the plasma membrane. Binding of exogenous FGF2 to FGFR facilitates endocytosis followed by translocation of FGF2 across endosomal membrane into the cytosol. Nuclear import from the cytosol requires the classical nuclear import machinery, involving proteins KPNA1 and KPNB1, as well as CEP57.

Tissue Specificity

Expressed in granulosa and cumulus cells. Expressed in hepatocellular carcinoma cells, but not in non- cancerous liver tissue..

Contents

Rabbit IgG in phosphate buffered saline, pH 7.4, 150mM NaCl, 0.02% sodium azide and 50% glycerol, 0.4-0.5mg/ml BSA.

Immunogen

A synthesized peptide derived from human FGF2

Purification

Affinity-chromatography

Storage

Store at -20°C for one year. For short term storage and frequent use, store at 4°C for up to one month. Avoid repeated freeze-thaw cycles.

Anti-FGF2/Fgf Basic Rabbit Monoclonal Antibody - Protein Information

Name FGF2

Synonyms FGFB

Function

Acts as a ligand for FGFR1, FGFR2, FGFR3 and FGFR4 (PubMed:8663044). Also acts as an integrin ligand which is required for FGF2 signaling (PubMed:28302677). Binds to integrin ITGAV:ITGB3 (PubMed:28302677). Plays an important role in the regulation of cell survival, cell division, cell differentiation and cell migration (PubMed:28302677, PubMed:8663044). Functions as a potent mitogen in vitro (PubMed:1721615, PubMed:3732516, PubMed:3964259). Can induce angiogenesis (PubMed:23469107, PubMed:28302677). Mediates phosphorylation of ERK1/2 and thereby promotes retinal lens fiber differentiation (PubMed:29501879).

Cellular Location

Secreted. Nucleus. Note=Exported from cells by an endoplasmic reticulum (ER)/Golgi-independent mechanism. Unconventional secretion of FGF2 occurs by direct translocation across the plasma membrane (PubMed:20230531). Binding of exogenous FGF2 to FGFR facilitates endocytosis followed by translocation of FGF2 across endosomal membrane into the cytosol (PubMed:22321063). Nuclear import from the cytosol requires the classical nuclear import machinery, involving proteins KPNA1 and KPNB1, as well as CEP57 (PubMed:22321063)

Tissue Location

Expressed in granulosa and cumulus cells. Expressed in hepatocellular carcinoma cells, but not in non-cancerous liver tissue.

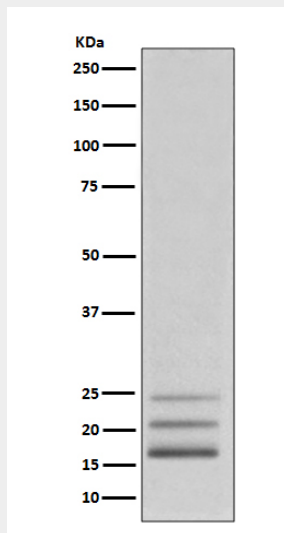
Anti-FGF2/Fgf Basic Rabbit Monoclonal Antibody - Protocols

Provided below are standard protocols that you may find useful for product applications.

- [Western Blot](#)
- [Blocking Peptides](#)
- [Dot Blot](#)
- [Immunohistochemistry](#)
- [Immunofluorescence](#)
- [Immunoprecipitation](#)

- [Flow Cytometry](#)
- [Cell Culture](#)

Anti-FGF2/Fgf Basic Rabbit Monoclonal Antibody - Images



Western blot analysis of FGF2 expression in K562 cell lysate.