

**Anti-NUMB Rabbit Monoclonal Antibody**  
Catalog # ABO13515**Specification****Anti-NUMB Rabbit Monoclonal Antibody - Product Information**

Application	WB
Primary Accession	<a href="#">P49757</a>
Host	Rabbit
Isotype	Rabbit IgG
Reactivity	Rat, Human, Mouse
Clonality	Monoclonal
Format	Liquid

**Description**

Anti-NUMB Rabbit Monoclonal Antibody . Tested in WB application. This antibody reacts with Human, Mouse, Rat.

**Anti-NUMB Rabbit Monoclonal Antibody - Additional Information**

**Gene ID** 8650

**Other Names**

Protein numb homolog, h-Numb, Protein S171, NUMB ([http://www.genenames.org/cgi-bin/gene\\_symbol\\_report?hgnc\\_id=8060](http://www.genenames.org/cgi-bin/gene_symbol_report?hgnc_id=8060))  
HGNC:8060

**Calculated MW**

70804 MW KDa

**Application Details**

WB 1:500-1:2000

**Subcellular Localization**

Membrane; Peripheral membrane protein.

**Contents**

Rabbit IgG in phosphate buffered saline, pH 7.4, 150mM NaCl, 0.02% sodium azide and 50% glycerol, 0.4-0.5mg/ml BSA.

**Immunogen**

A synthesized peptide derived from human NUMB

**Purification**

Affinity-chromatography

**Storage**

Store at -20°C for one year. For short term storage and frequent use, store at 4°C for up to one month. Avoid repeated freeze-thaw cycles.

## Anti-NUMB Rabbit Monoclonal Antibody - Protein Information

Name NUMB ([HGNC:8060](#))

### Function

Regulates clathrin-mediated receptor endocytosis (PubMed:<a href="http://www.uniprot.org/citations/18657069" target="\_blank">18657069</a>). Plays a role in the process of neurogenesis (By similarity). Required throughout embryonic neurogenesis to maintain neural progenitor cells, also called radial glial cells (RGCs), by allowing their daughter cells to choose progenitor over neuronal cell fate (By similarity). Not required for the proliferation of neural progenitor cells before the onset of neurogenesis. Also involved postnatally in the subventricular zone (SVZ) neurogenesis by regulating SVZ neuroblasts survival and ependymal wall integrity (By similarity). May also mediate local repair of brain ventricular wall damage (By similarity).

### Cellular Location

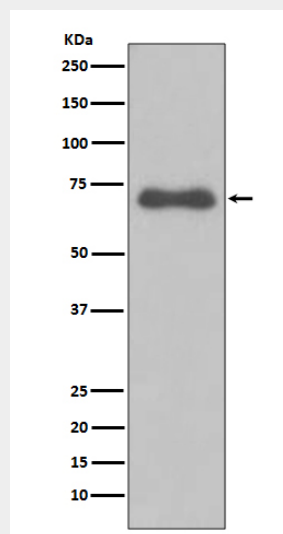
Cell membrane; Peripheral membrane protein; Cytoplasmic side. Endosome membrane; Peripheral membrane protein; Cytoplasmic side. Note=Localizes to perinuclear endosomes in an AAK1-dependent manner.

## Anti-NUMB Rabbit Monoclonal Antibody - Protocols

Provided below are standard protocols that you may find useful for product applications.

- [Western Blot](#)
- [Blocking Peptides](#)
- [Dot Blot](#)
- [Immunohistochemistry](#)
- [Immunofluorescence](#)
- [Immunoprecipitation](#)
- [Flow Cytometry](#)
- [Cell Culture](#)

## Anti-NUMB Rabbit Monoclonal Antibody - Images



Western blot analysis of NUMB expression in Ramos cell lysate.