

Anti-SOD1/Cu Zn Sod Rabbit Monoclonal Antibody
Catalog # ABO13508**Specification****Anti-SOD1/Cu Zn Sod Rabbit Monoclonal Antibody - Product Information**

Application	WB, IHC, IF, ICC, FC
Primary Accession	P00441
Host	Rabbit
Isotype	Rabbit IgG
Reactivity	Rat, Human, Mouse
Clonality	Monoclonal
Format	Liquid

Description

Anti-SOD1/Cu Zn Sod Rabbit Monoclonal Antibody . Tested in WB, IHC, ICC/IF, Flow Cytometry applications. This antibody reacts with Human, Mouse, Rat.

Anti-SOD1/Cu Zn Sod Rabbit Monoclonal Antibody - Additional Information

Gene ID 6647

Other Names

Superoxide dismutase [Cu-Zn], 1.15.1.1, Superoxide dismutase 1, hSod1, SOD1 ([HGNC:11179](http://www.genenames.org/cgi-bin/gene_symbol_report?hgnc_id=11179))

Calculated MW

15936 MW KDa

Application Details

WB 1:500-1:2000
IHC 1:50-1:200
ICC/IF 1:50-1:200
FC 1:50

Subcellular Localization

Cytoplasm. Nucleus. Predominantly cytoplasmic; the pathogenic variants ALS1 Arg-86 and Ala-94 gradually aggregates and accumulates in mitochondria.

Contents

Rabbit IgG in phosphate buffered saline, pH 7.4, 150mM NaCl, 0.02% sodium azide and 50% glycerol, 0.4-0.5mg/ml BSA.

Immunogen

A synthesized peptide derived from human SOD1

Purification

Affinity-chromatography

Storage

Store at -20°C for one year. For short term storage and frequent use, store at 4°C for up to one month. Avoid repeated freeze-thaw cycles.

Anti-SOD1/Cu Zn Sod Rabbit Monoclonal Antibody - Protein Information

Name SOD1 ([HGNC:11179](#))

Function

Destroys radicals which are normally produced within the cells and which are toxic to biological systems.

Cellular Location

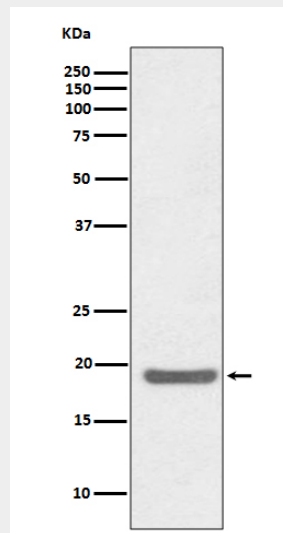
Cytoplasm. Nucleus. Note=Predominantly cytoplasmic; the pathogenic variants ALS1 Arg-86 and Ala-94 gradually aggregates and accumulates in mitochondria.

Anti-SOD1/Cu Zn Sod Rabbit Monoclonal Antibody - Protocols

Provided below are standard protocols that you may find useful for product applications.

- [Western Blot](#)
- [Blocking Peptides](#)
- [Dot Blot](#)
- [Immunohistochemistry](#)
- [Immunofluorescence](#)
- [Immunoprecipitation](#)
- [Flow Cytometry](#)
- [Cell Culture](#)

Anti-SOD1/Cu Zn Sod Rabbit Monoclonal Antibody - Images



Western blot analysis of CD80 expression in Jurkat cell lysate.