

Anti-CD19 Rabbit Monoclonal Antibody
Catalog # ABO13504**Specification**

Anti-CD19 Rabbit Monoclonal Antibody - Product Information

Application	WB, FC
Primary Accession	P15391
Host	Rabbit
Isotype	Rabbit IgG
Reactivity	Rat, Human, Mouse
Clonality	Monoclonal
Format	Liquid

Description

Anti-CD19 Rabbit Monoclonal Antibody . Tested in WB, Flow Cytometry applications. This antibody reacts with Human, Mouse, Rat.

Anti-CD19 Rabbit Monoclonal Antibody - Additional Information

Gene ID 930

Other Names

B-lymphocyte antigen CD19, B-lymphocyte surface antigen B4, Differentiation antigen CD19, T-cell surface antigen Leu-12, CD19, CD19

Calculated MW

61128 MW KDa

Application Details

WB 1:500-1:1000
FC 1:50

Subcellular Localization

Membrane; Single-pass type I membrane protein.

Contents

Rabbit IgG in phosphate buffered saline, pH 7.4, 150mM NaCl, 0.02% sodium azide and 50% glycerol, 0.4-0.5mg/ml BSA.

Immunogen

A synthesized peptide derived from human CD19

Purification

Affinity-chromatography

Storage

Store at -20°C for one year. For short term storage and frequent use, store at 4°C for up to one month. Avoid repeated freeze-thaw cycles.

Anti-CD19 Rabbit Monoclonal Antibody - Protein Information

Name CD19

Function

Functions as a coreceptor for the B-cell antigen receptor complex (BCR) on B-lymphocytes (PubMed:29523808). Decreases the threshold for activation of downstream signaling pathways and for triggering B-cell responses to antigens (PubMed:1373518, PubMed:16672701, PubMed:2463100). Activates signaling pathways that lead to the activation of phosphatidylinositol 3-kinase and the mobilization of intracellular Ca(2+) stores (PubMed:12387743, PubMed:16672701, PubMed:9317126, PubMed:9382888). Is not required for early steps during B cell differentiation in the blood marrow (PubMed:9317126). Required for normal differentiation of B-1 cells (By similarity). Required for normal B cell differentiation and proliferation in response to antigen challenges (PubMed:1373518, PubMed:2463100). Required for normal levels of serum immunoglobulins, and for production of high-affinity antibodies in response to antigen challenge (PubMed:12387743, PubMed:16672701, PubMed:9317126).

Cellular Location

Cell membrane; Single-pass type I membrane protein. Membrane raft
{ECO:0000250|UniProtKB:P25918}; Single-pass type I membrane protein
{ECO:0000250|UniProtKB:P25918}

Tissue Location

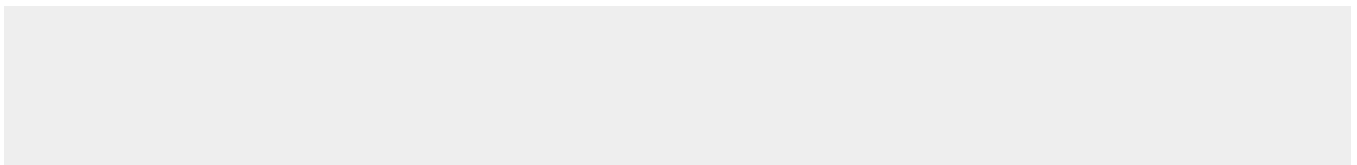
Detected on marginal zone and germinal center B cells in lymph nodes (PubMed:2463100).
Detected on blood B cells (at protein level) (PubMed:16672701, PubMed:2463100)

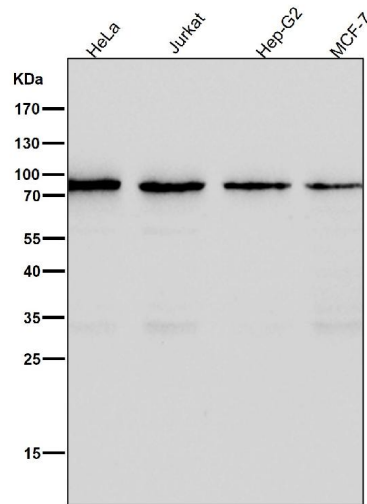
Anti-CD19 Rabbit Monoclonal Antibody - Protocols

Provided below are standard protocols that you may find useful for product applications.

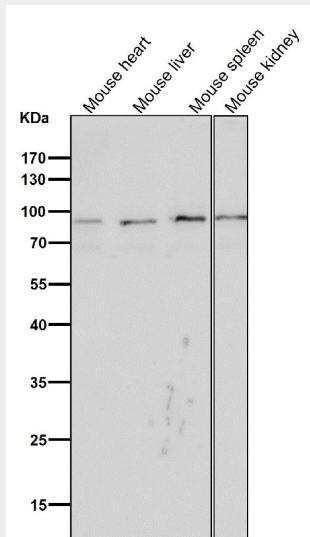
- [Western Blot](#)
- [Blocking Peptides](#)
- [Dot Blot](#)
- [Immunohistochemistry](#)
- [Immunofluorescence](#)
- [Immunoprecipitation](#)
- [Flow Cytometry](#)
- [Cell Culture](#)

Anti-CD19 Rabbit Monoclonal Antibody - Images

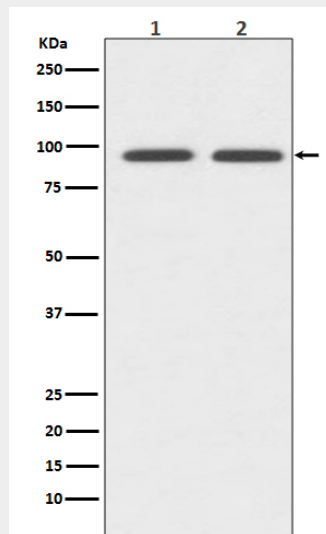




All lanes use the Antibody at 1:2K dilution for 1 hour at room temperature.



All lanes use the Antibody at 1:2K dilution for 1 hour at room temperature.



Western blot analysis of CD19 expression in (1) Jurkat cell lysate; (2) Rat spleen lysate.