

Anti-PLAT/Tpa Rabbit Monoclonal Antibody
Catalog # ABO13499**Specification****Anti-PLAT/Tpa Rabbit Monoclonal Antibody - Product Information**

Application	WB, IHC
Primary Accession	P00750
Host	Rabbit
Isotype	Rabbit IgG
Reactivity	Rat, Human, Mouse
Clonality	Monoclonal
Format	Liquid

Description

Anti-PLAT/Tpa Rabbit Monoclonal Antibody . Tested in WB, IHC applications. This antibody reacts with Human, Mouse, Rat.

Anti-PLAT/Tpa Rabbit Monoclonal Antibody - Additional Information

Gene ID 5327

Other Names

Tissue-type plasminogen activator, t-PA, t-plasminogen activator, tPA, 3.4.21.68, Alteplase, Reteplase, Tissue-type plasminogen activator chain A, Tissue-type plasminogen activator chain B, PLAT (http://www.genenames.org/cgi-bin/gene_symbol_report?hgnc_id=9051)
target="_blank">HGNC:9051)

Calculated MW

62917 MW KDa

Application Details

WB 1:500-1:2000
IHC 1:50-1:200

Subcellular Localization

Secreted, extracellular space.

Tissue Specificity

Synthesized in numerous tissues (including tumors) and secreted into most extracellular body fluids, such as plasma, uterine fluid, saliva, gingival crevicular fluid, tears, seminal fluid, and milk.

Contents

Rabbit IgG in phosphate buffered saline, pH 7.4, 150mM NaCl, 0.02% sodium azide and 50% glycerol, 0.4-0.5mg/ml BSA.

Immunogen

A synthesized peptide derived from human PLAT

Purification

Affinity-chromatography

Storage

Store at -20°C for one year. For short term storage and frequent use, store at 4°C for up to one month. Avoid repeated freeze-thaw cycles.

Anti-PLAT/Tpa Rabbit Monoclonal Antibody - Protein Information

Name PLAT ([HGNC:9051](#))

Function

Converts the abundant, but inactive, zymogen plasminogen to plasmin by hydrolyzing a single Arg-Val bond in plasminogen. By controlling plasmin-mediated proteolysis, it plays an important role in tissue remodeling and degradation, in cell migration and many other physiopathological events. During oocyte activation, plays a role in cortical granule reaction in the zona reaction, which contributes to the block to polyspermy (By similarity).

Cellular Location

Secreted, extracellular space.

Tissue Location

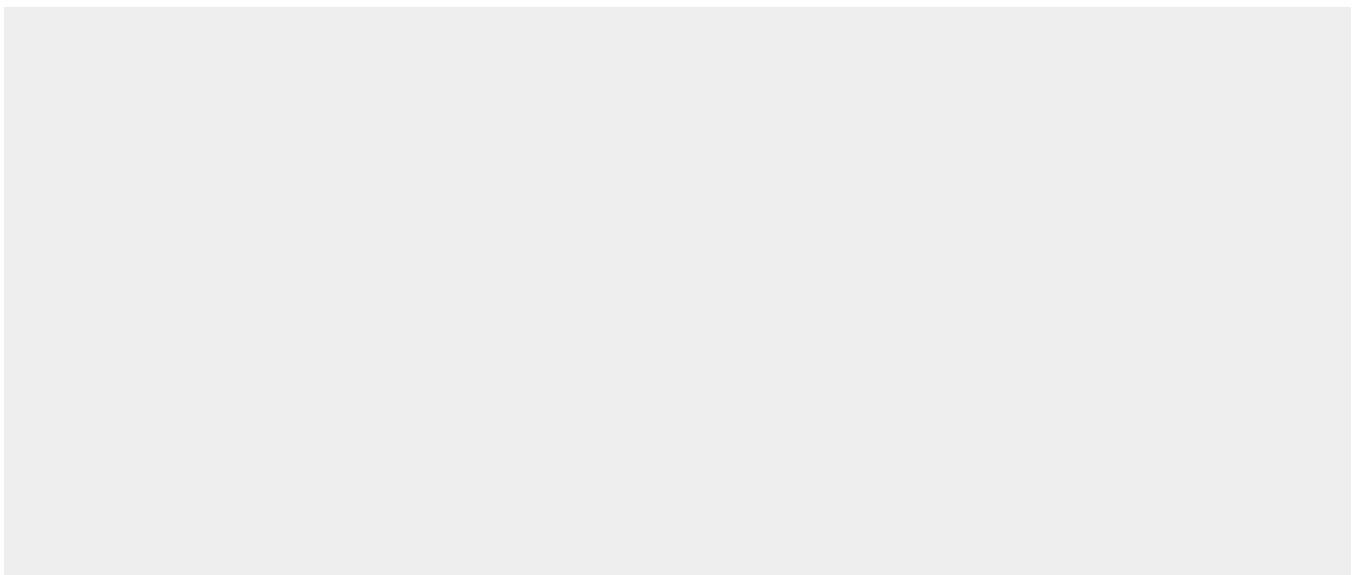
Synthesized in numerous tissues (including tumors) and secreted into most extracellular body fluids, such as plasma, uterine fluid, saliva, gingival crevicular fluid, tears, seminal fluid, and milk

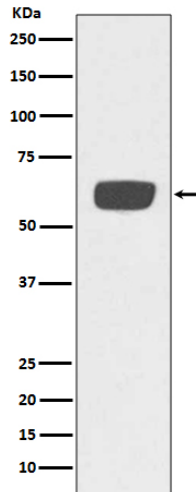
Anti-PLAT/Tpa Rabbit Monoclonal Antibody - Protocols

Provided below are standard protocols that you may find useful for product applications.

- [Western Blot](#)
- [Blocking Peptides](#)
- [Dot Blot](#)
- [Immunohistochemistry](#)
- [Immunofluorescence](#)
- [Immunoprecipitation](#)
- [Flow Cytometry](#)
- [Cell Culture](#)

Anti-PLAT/Tpa Rabbit Monoclonal Antibody - Images





Western blot analysis of PLAT expression in human plasma lysate.