

Anti-MRC1/Cd206 Rabbit Monoclonal Antibody
Catalog # ABO13498

Specification

Anti-MRC1/Cd206 Rabbit Monoclonal Antibody - Product Information

Application	WB, IF, ICC
Primary Accession	P22897
Host	Rabbit
Isotype	Rabbit IgG
Reactivity	Human
Clonality	Monoclonal
Format	Liquid

Description

Anti-MRC1/Cd206 Rabbit Monoclonal Antibody . Tested in WB, ICC/IF applications. This antibody reacts with Human.

Anti-MRC1/Cd206 Rabbit Monoclonal Antibody - Additional Information

Gene ID 4360

Other Names

Macrophage mannose receptor 1, MMR, C-type lectin domain family 13 member D, C-type lectin domain family 13 member D-like, Human mannose receptor, hMR, Macrophage mannose receptor 1-like protein 1, CD206, MRC1, CLEC13D, CLEC13DL, MRC1L1

Calculated MW

166012 MW KDa

Application Details

WB 1:500-1:2000
ICC/IF 1:50-1:200

Subcellular Localization

Endosome membrane ; Single-pass type I membrane protein. Cell membrane ; Single-pass type I membrane protein.

Contents

Rabbit IgG in phosphate buffered saline, pH 7.4, 150mM NaCl, 0.02% sodium azide and 50% glycerol, 0.4-0.5mg/ml BSA.

Immunogen

A synthesized peptide derived from human MRC1

Purification

Affinity-chromatography

Storage

Store at -20°C for one year. For short term storage and frequent use, store at 4°C for up to one month. Avoid repeated freeze-thaw cycles.

Anti-MRC1/Cd206 Rabbit Monoclonal Antibody - Protein Information

Name MRC1

Synonyms CLEC13D, CLEC13DL, MRC1L1

Function

Mediates the endocytosis of glycoproteins by macrophages. Binds both sulfated and non-sulfated polysaccharide chains. (Microbial infection) Acts as a receptor for Dengue virus envelope protein E.

Cellular Location

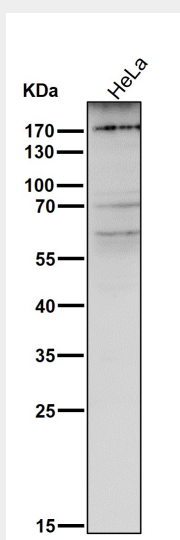
Endosome membrane; Single-pass type I membrane protein. Cell membrane; Single-pass type I membrane protein

Anti-MRC1/Cd206 Rabbit Monoclonal Antibody - Protocols

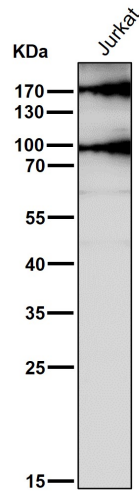
Provided below are standard protocols that you may find useful for product applications.

- [Western Blot](#)
- [Blocking Peptides](#)
- [Dot Blot](#)
- [Immunohistochemistry](#)
- [Immunofluorescence](#)
- [Immunoprecipitation](#)
- [Flow Cytometry](#)
- [Cell Culture](#)

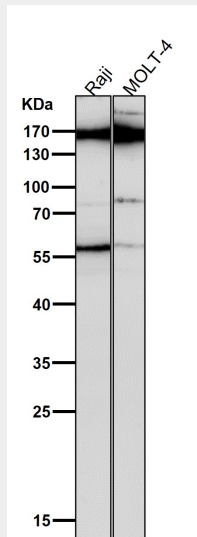
Anti-MRC1/Cd206 Rabbit Monoclonal Antibody - Images



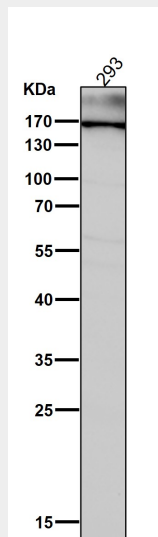
All lanes use the Antibody at 1:3K dilution for 1 hour at room temperature.



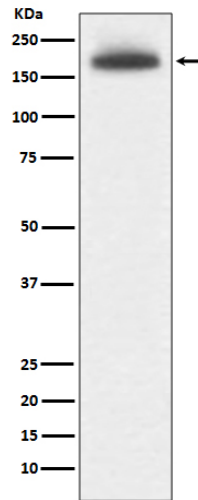
All lanes use the Antibody at 1:3K dilution for 1 hour at room temperature.



All lanes use the Antibody at 1:1W dilution for 1 hour at room temperature.



All lanes use the Antibody at 1:1W dilution for 1 hour at room temperature.



Western blot analysis of MRC1 expression in 293T cell lysate.