

Anti-GPX1/Glutathione Peroxidase 1 Rabbit Monoclonal Antibody
Catalog # ABO13493**Specification****Anti-GPX1/Glutathione Peroxidase 1 Rabbit Monoclonal Antibody - Product Information**

Application	WB, IHC, IP
Primary Accession	P07203
Host	Rabbit
Isotype	Rabbit IgG
Reactivity	Rat, Human, Mouse
Clonality	Monoclonal
Format	Liquid

Description

Anti-GPX1/Glutathione Peroxidase 1 Rabbit Monoclonal Antibody . Tested in WB, IHC, IP applications. This antibody reacts with Human, Mouse, Rat.

Anti-GPX1/Glutathione Peroxidase 1 Rabbit Monoclonal Antibody - Additional Information

Gene ID 2876

Other Names

Glutathione peroxidase 1, GPx-1, GSHPx-1, 1.11.1.9, Cellular glutathione peroxidase, Phospholipid-hydroperoxide glutathione peroxidase GPX1, 1.11.1.12, GPX1 ([HGNC:4553](http://www.genenames.org/cgi-bin/gene_symbol_report?hgnc_id=4553))

Calculated MW

22088 MW KDa

Application Details

WB 1:500-1:2000
IHC 1:50-1:200
IP 1:50

Subcellular Localization

Cytoplasm.

Contents

Rabbit IgG in phosphate buffered saline, pH 7.4, 150mM NaCl, 0.02% sodium azide and 50% glycerol, 0.4-0.5mg/ml BSA.

Immunogen

A synthesized peptide derived from human GPX1

Purification

Affinity-chromatography

Storage

Store at -20°C for one year. For short term storage and frequent use, store at 4°C for up to one month. Avoid repeated

freeze-thaw cycles.

Anti-GPX1/Glutathione Peroxidase 1 Rabbit Monoclonal Antibody - Protein Information

Name GPX1 ([HGNC:4553](#))

Function

Catalyzes the reduction of hydroperoxides in a glutathione- dependent manner thus regulating cellular redox homeostasis (PubMed: [11115402](http://www.uniprot.org/citations/11115402), PubMed: [36608588](http://www.uniprot.org/citations/36608588)). Can reduce small soluble hydroperoxides such as H₂O₂, cumene hydroperoxide and tert-butyl hydroperoxide, as well as several fatty acid-derived hydroperoxides (PubMed: [11115402](http://www.uniprot.org/citations/11115402), PubMed: [36608588](http://www.uniprot.org/citations/36608588)). In platelets catalyzes the reduction of 12-hydroperoxyeicosatetraenoic acid, the primary product of the arachidonate 12-lipoxygenase pathway (PubMed: [11115402](http://www.uniprot.org/citations/11115402)).

Cellular Location

Cytoplasm {ECO:0000250|UniProtKB:P11352}. Mitochondrion {ECO:0000250|UniProtKB:P11352}

Tissue Location

Expressed in platelets (at protein level).

Anti-GPX1/Glutathione Peroxidase 1 Rabbit Monoclonal Antibody - Protocols

Provided below are standard protocols that you may find useful for product applications.

- [Western Blot](#)
- [Blocking Peptides](#)
- [Dot Blot](#)
- [Immunohistochemistry](#)
- [Immunofluorescence](#)
- [Immunoprecipitation](#)
- [Flow Cytometry](#)
- [Cell Culture](#)

Anti-GPX1/Glutathione Peroxidase 1 Rabbit Monoclonal Antibody - Images



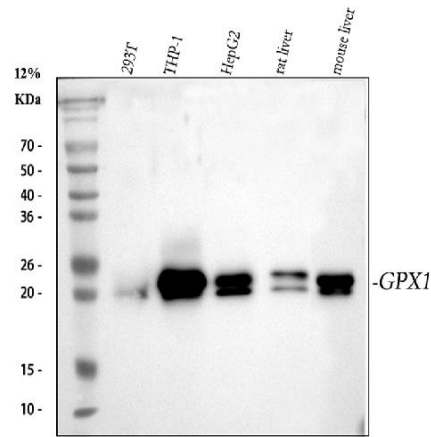


Figure 1. Western blot analysis of GPX1 using anti-GPX1 antibody (M01019-1).

Electrophoresis was performed on a 5-20% SDS-PAGE gel at 70V (Stacking gel) / 90V (Resolving gel) for 2-3 hours. The sample well of each lane was loaded with 30 ug of sample under reducing conditions.

- Lane 1: human 293T whole cell lysates,
- Lane 2: human THP-1 whole cell lysates,
- Lane 3: human HepG2 whole cell lysates,
- Lane 4: rat liver tissue lysates,
- Lane 5: mouse liver tissue lysates.

After electrophoresis, proteins were transferred to a nitrocellulose membrane at 150 mA for 50-90 minutes. Blocked the membrane with 5% non-fat milk/TBS for 1.5 hour at RT. The membrane was incubated with rabbit anti-GPX1 antigen affinity purified monoclonal antibody (Catalog # M01019-1) at 1:500 overnight at 4°C, then washed with TBS-0.1%Tween 3 times with 5 minutes each and probed with a goat anti-rabbit IgG-HRP secondary antibody at a dilution of 1:1000 for 1.5 hour at RT. The signal is developed using an Enhanced Chemiluminescent detection (ECL) kit (Catalog # EK1002) with Tanon 5200 system. A specific band was detected for GPX1 at approximately 22 kDa. The expected band size for GPX1 is at 22 kDa.

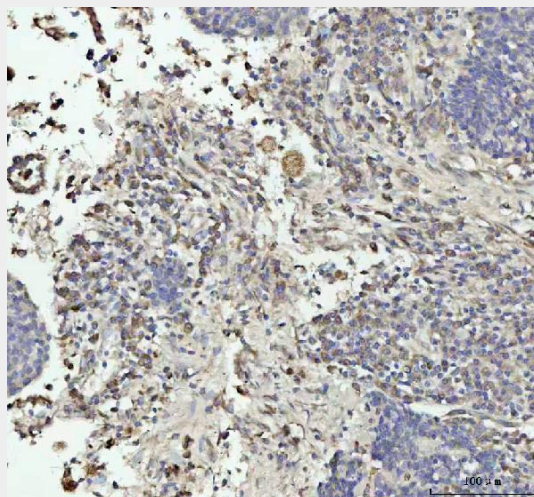


Figure 2. IHC analysis of GPX1 using anti-GPX1 antibody (M01019-1).

GPX1 was detected in a paraffin-embedded section of human lung squamous cell carcinoma tissue. Heat mediated antigen retrieval was performed in EDTA buffer (pH 8.0, epitope retrieval solution). The tissue section was blocked with 10% goat serum. The tissue section was then incubated with 1:50 rabbit anti-GPX1 Antibody (M01019-1) overnight at 4°C. Peroxidase Conjugated Goat Anti-rabbit IgG was used as secondary antibody and incubated for 30 minutes at

37°C. The tissue section was developed using HRP Conjugated Rabbit IgG Super Vision Assay Kit (Catalog # SV0002) with DAB as the chromogen.

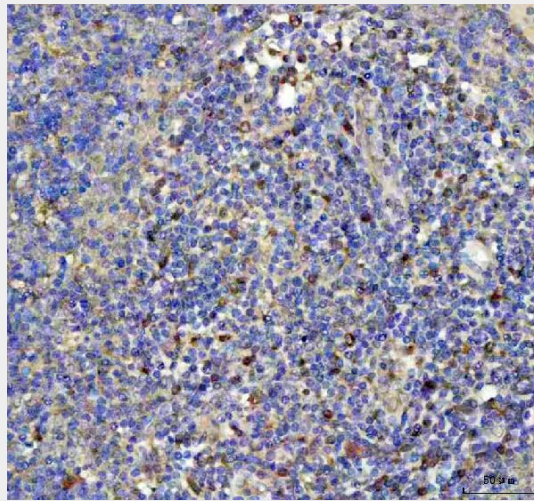


Figure 3. IHC analysis of GPX1 using anti-GPX1 antibody (M01019-1). GPX1 was detected in a paraffin-embedded section of human spleen tissue. Heat mediated antigen retrieval was performed in EDTA buffer (pH 8.0, epitope retrieval solution). The tissue section was blocked with 10% goat serum. The tissue section was then incubated with 1:50 rabbit anti-GPX1 Antibody (M01019-1) overnight at 4°C. Peroxidase Conjugated Goat Anti-rabbit IgG was used as secondary antibody and incubated for 30 minutes at 37°C. The tissue section was developed using HRP Conjugated Rabbit IgG Super Vision Assay Kit (Catalog # SV0002) with DAB as the chromogen.

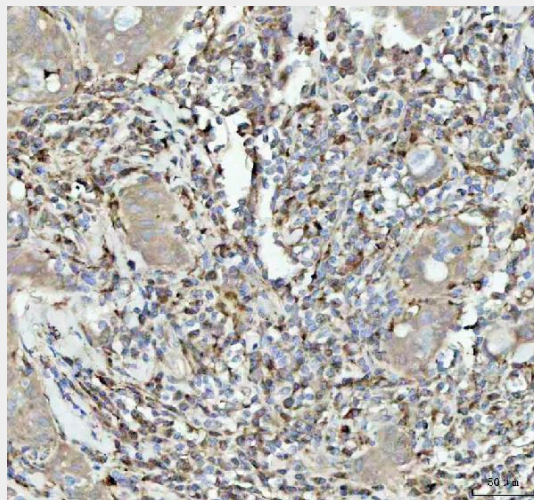


Figure 4. IHC analysis of GPX1 using anti-GPX1 antibody (M01019-1). GPX1 was detected in a paraffin-embedded section of human breast cancer tissue. Heat mediated antigen retrieval was performed in EDTA buffer (pH 8.0, epitope retrieval solution). The tissue section was blocked with 10% goat serum. The tissue section was then incubated with 1:50 rabbit anti-GPX1 Antibody (M01019-1) overnight at 4°C. Peroxidase Conjugated Goat Anti-rabbit IgG was used as secondary antibody and incubated for 30 minutes at 37°C. The tissue section was developed using HRP Conjugated Rabbit IgG Super Vision Assay Kit (Catalog # SV0002) with DAB as the chromogen.