

Anti-CDC5 CDC5L Rabbit Monoclonal Antibody
Catalog # ABO13480

Specification

Anti-CDC5 CDC5L Rabbit Monoclonal Antibody - Product Information

Application	WB, IHC, IF, ICC
Primary Accession	Q99459
Host	Rabbit
Isotype	Rabbit IgG
Reactivity	Rat, Human, Mouse
Clonality	Monoclonal
Format	Liquid

Description

Anti-CDC5 CDC5L Rabbit Monoclonal Antibody . Tested in WB, IHC, ICC/IF applications. This antibody reacts with Human, Mouse, Rat.

Anti-CDC5 CDC5L Rabbit Monoclonal Antibody - Additional Information

Gene ID 988

Other Names

Cell division cycle 5-like protein, Cdc5-like protein, Pombe cdc5-related protein, CDC5L, KIAA0432, PCDC5RP

Calculated MW

92251 MW KDa

Application Details

WB 1:500-1:2000
IHC 1:50-1:200
ICC/IF 1:50-1:200

Subcellular Localization

Nucleus. Nucleus speckle. Cytoplasm. May shuttle between cytoplasm and nucleus..

Tissue Specificity

Ubiquitously expressed in both fetal and adult tissues..

Contents

Rabbit IgG in phosphate buffered saline, pH 7.4, 150mM NaCl, 0.02% sodium azide and 50% glycerol, 0.4-0.5mg/ml BSA.

Immunogen

A synthesized peptide derived from human CDC5

Purification

Affinity-chromatography

Storage

Store at -20°C for one year. For short term storage and frequent use, store at 4°C for up to one month. Avoid repeated

freeze-thaw cycles.

Anti-CDC5 CDC5L Rabbit Monoclonal Antibody - Protein Information

Name CDC5L

Synonyms KIAA0432, PCDC5RP

Function

DNA-binding protein involved in cell cycle control. May act as a transcription activator. Plays a role in pre-mRNA splicing as core component of precatalytic, catalytic and postcatalytic spliceosomal complexes (PubMed: [11991638](http://www.uniprot.org/citations/11991638)), PubMed: [20176811](http://www.uniprot.org/citations/20176811)), PubMed: [28076346](http://www.uniprot.org/citations/28076346)), PubMed: [28502770](http://www.uniprot.org/citations/28502770)), PubMed: [29301961](http://www.uniprot.org/citations/29301961)), PubMed: [29360106](http://www.uniprot.org/citations/29360106)), PubMed: [29361316](http://www.uniprot.org/citations/29361316)), PubMed: [30705154](http://www.uniprot.org/citations/30705154)), PubMed: [30728453](http://www.uniprot.org/citations/30728453)). Component of the PRP19-CDC5L complex that forms an integral part of the spliceosome and is required for activating pre-mRNA splicing. The PRP19-CDC5L complex may also play a role in the response to DNA damage (DDR) (PubMed: [20176811](http://www.uniprot.org/citations/20176811)). As a component of the minor spliceosome, involved in the splicing of U12- type introns in pre-mRNAs (Probable).

Cellular Location

Nucleus. Nucleus speckle. Cytoplasm Note=May shuttle between cytoplasm and nucleus

Tissue Location

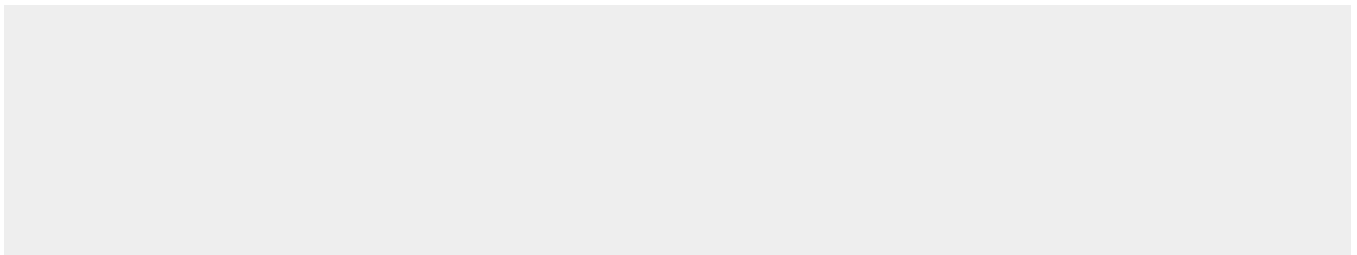
Ubiquitously expressed in both fetal and adult tissues.

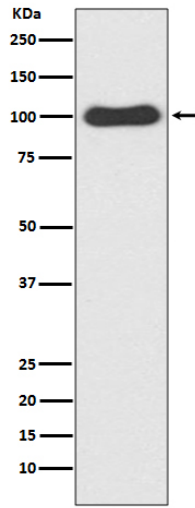
Anti-CDC5 CDC5L Rabbit Monoclonal Antibody - Protocols

Provided below are standard protocols that you may find useful for product applications.

- [Western Blot](#)
- [Blocking Peptides](#)
- [Dot Blot](#)
- [Immunohistochemistry](#)
- [Immunofluorescence](#)
- [Immunoprecipitation](#)
- [Flow Cytometry](#)
- [Cell Culture](#)

Anti-CDC5 CDC5L Rabbit Monoclonal Antibody - Images





Western blot analysis of CDC5 expression in HeLa cell lysate.