

Anti-PAX7 Rabbit Monoclonal Antibody Catalog # ABO13477

Specification

Anti-PAX7 Rabbit Monoclonal Antibody - Product Information

Application	WB, FC
Primary Accession	P23759
Host	Rabbit
Isotype	Rabbit IgG
Reactivity	Rat, Human, Mouse
Clonality	Monoclonal
Format	Liquid

Description

Anti-PAX7 Rabbit Monoclonal Antibody . Tested in WB, Flow Cytometry applications. This antibody reacts with Human, Mouse, Rat.

Anti-PAX7 Rabbit Monoclonal Antibody - Additional Information

Gene ID 5081

Other Names

Paired box protein Pax-7, HuP1, PAX7, HUP1

Calculated MW

55119 MW KDa

Application Details

WB 1:1000-1:2000
FC 1:100

Subcellular Localization

Nucleus.

Contents

Rabbit IgG in phosphate buffered saline, pH 7.4, 150mM NaCl, 0.02% sodium azide and 50% glycerol, 0.4-0.5mg/ml BSA.

Immunogen

A synthesized peptide derived from human PAX7

Purification

Affinity-chromatography

Storage

Store at -20°C for one year. For short term storage and frequent use, store at 4°C for up to one month. Avoid repeated freeze-thaw cycles.

Anti-PAX7 Rabbit Monoclonal Antibody - Protein Information

Name PAX7

Synonyms HUP1

Function

Transcription factor that is involved in the regulation of muscle stem cells proliferation, playing a role in myogenesis and muscle regeneration.

Cellular Location

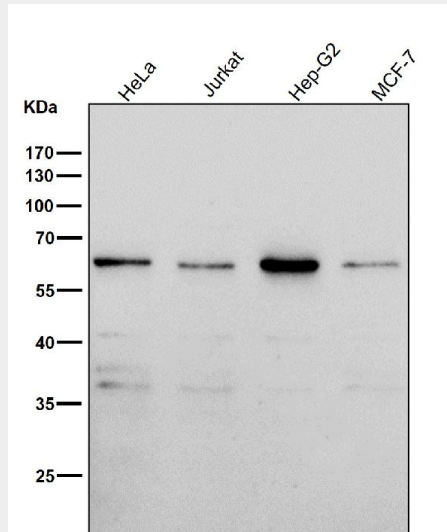
Nucleus {ECO:0000250|UniProtKB:P47239}.

Anti-PAX7 Rabbit Monoclonal Antibody - Protocols

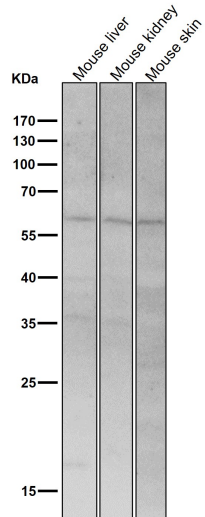
Provided below are standard protocols that you may find useful for product applications.

- [Western Blot](#)
- [Blocking Peptides](#)
- [Dot Blot](#)
- [Immunohistochemistry](#)
- [Immunofluorescence](#)
- [Immunoprecipitation](#)
- [Flow Cytometry](#)
- [Cell Culture](#)

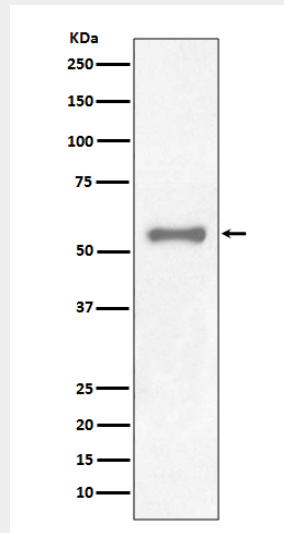
Anti-PAX7 Rabbit Monoclonal Antibody - Images



All lanes use the Antibody at 1:2K dilution for 1 hour at room temperature.



All lanes use the Antibody at 1:2K dilution for 1 hour at room temperature.



Western blot analysis of PAX7 expression in HeLa lysate.