

Anti-PAX6 Rabbit Monoclonal Antibody
Catalog # ABO13470**Specification****Anti-PAX6 Rabbit Monoclonal Antibody - Product Information**

Application	WB, IHC, FC
Primary Accession	P26367
Host	Rabbit
Isotype	Rabbit IgG
Reactivity	Rat, Human, Mouse
Clonality	Monoclonal
Format	Liquid

Description

Anti-PAX6 Rabbit Monoclonal Antibody . Tested in WB, IHC, Flow Cytometry applications. This antibody reacts with Human, Mouse, Rat.

Anti-PAX6 Rabbit Monoclonal Antibody - Additional Information

Gene ID 5080

Other Names

Paired box protein Pax-6, Aniridia type II protein, Oculorhombin, PAX6, AN2

Calculated MW

46683 MW KDa

Application Details

WB 1:1000-1:2000
IHC 1:50-1:200
FC 1:500

Subcellular Localization

Nucleus.

Tissue Specificity

Fetal eye, brain, spinal cord and olfactory epithelium. Isoform 5a is less abundant than the PAX6 shorter form.

Contents

Rabbit IgG in phosphate buffered saline, pH 7.4, 150mM NaCl, 0.02% sodium azide and 50% glycerol, 0.4-0.5mg/ml BSA.

Immunogen

A synthesized peptide derived from human PAX6

Purification

Affinity-chromatography

Storage

Store at -20°C for one year. For short term storage and frequent use, store at 4°C for up to one month. Avoid repeated

freeze-thaw cycles.

Anti-PAX6 Rabbit Monoclonal Antibody - Protein Information

Name PAX6

Synonyms AN2

Function

Transcription factor with important functions in the development of the eye, nose, central nervous system and pancreas. Required for the differentiation of pancreatic islet alpha cells (By similarity). Competes with PAX4 in binding to a common element in the glucagon, insulin and somatostatin promoters. Regulates specification of the ventral neuron subtypes by establishing the correct progenitor domains (By similarity). Acts as a transcriptional repressor of NFATC1- mediated gene expression (By similarity).

Cellular Location

Nucleus {ECO:0000250|UniProtKB:P63015}. [Isoform 5a]: Nucleus {ECO:0000250|UniProtKB:P63016}

Tissue Location

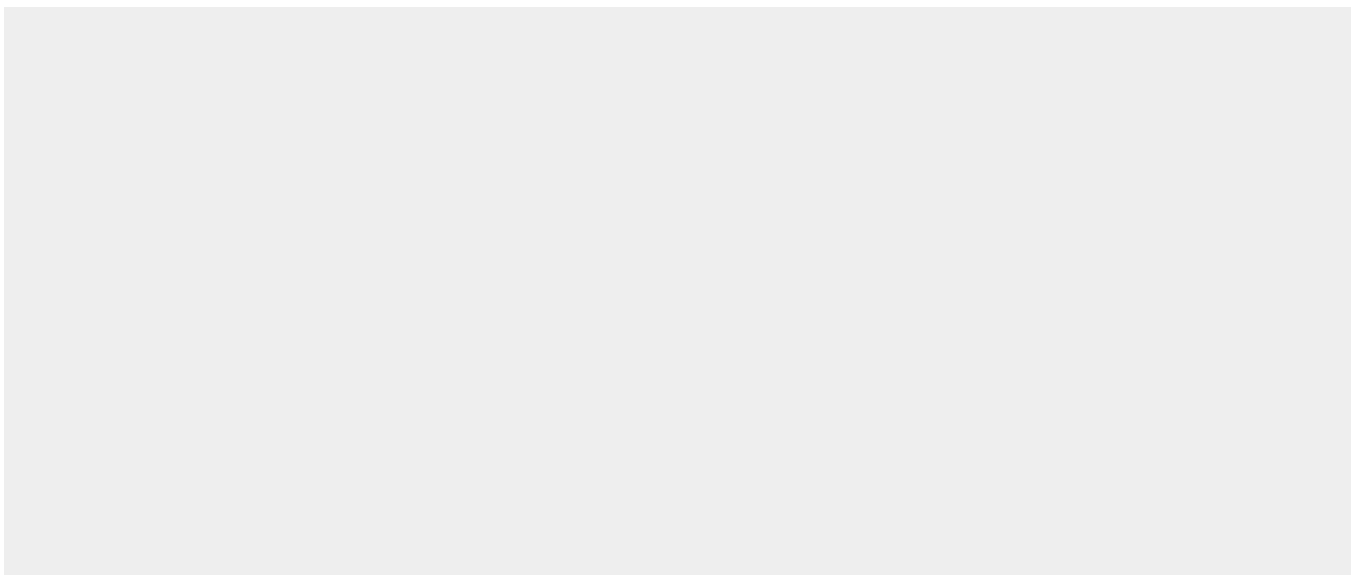
[Isoform 1]: Expressed in lymphoblasts.

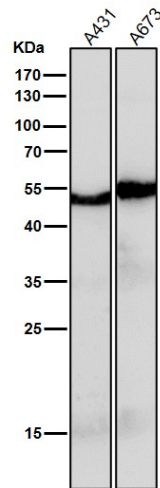
Anti-PAX6 Rabbit Monoclonal Antibody - Protocols

Provided below are standard protocols that you may find useful for product applications.

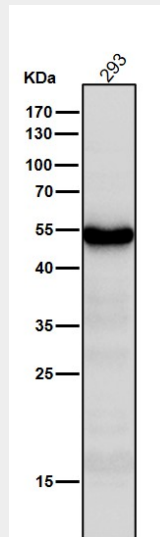
- [Western Blot](#)
- [Blocking Peptides](#)
- [Dot Blot](#)
- [Immunohistochemistry](#)
- [Immunofluorescence](#)
- [Immunoprecipitation](#)
- [Flow Cytometry](#)
- [Cell Culture](#)

Anti-PAX6 Rabbit Monoclonal Antibody - Images

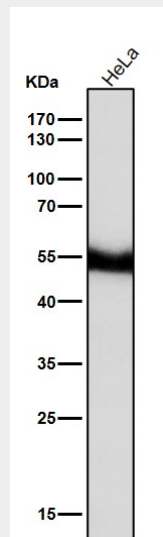




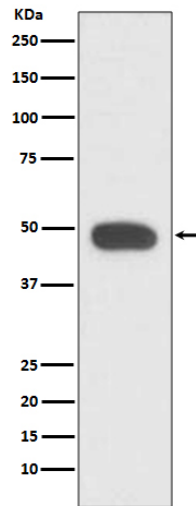
All lanes use the Antibody at 1:2K dilution for 1 hour at room temperature.



All lanes use the Antibody at 1:2K dilution for 1 hour at room temperature.



All lanes use the Antibody at 1:2K dilution for 1 hour at room temperature.



Western blot analysis of PAX6 expression in HeLa cell lysate.