

**Anti-MEK5 Rabbit Monoclonal Antibody**  
Catalog # ABO13465**Specification****Anti-MEK5 Rabbit Monoclonal Antibody - Product Information**

|                   |                        |
|-------------------|------------------------|
| Application       | WB, IF, ICC            |
| Primary Accession | <a href="#">Q13163</a> |
| Host              | Rabbit                 |
| Isotype           | Rabbit IgG             |
| Reactivity        | Human                  |
| Clonality         | Monoclonal             |
| Format            | Liquid                 |

**Description**

Anti-MEK5 Rabbit Monoclonal Antibody . Tested in WB, ICC/IF applications. This antibody reacts with Human.

**Anti-MEK5 Rabbit Monoclonal Antibody - Additional Information**

**Gene ID** 5607

**Other Names**

Dual specificity mitogen-activated protein kinase kinase 5, MAP kinase kinase 5, MAPKK 5, 2.7.12.2, MAPK/ERK kinase 5, MEK 5, MAP2K5, MEK5, MKK5, PRKMK5

**Calculated MW**

50112 MW KDa

**Application Details**

WB 1:1000-1:2000<br>ICC/IF 1:50-1:200

**Tissue Specificity**

Expressed in many adult tissues. Abundant in heart and skeletal muscle.

**Contents**

Rabbit IgG in phosphate buffered saline, pH 7.4, 150mM NaCl, 0.02% sodium azide and 50% glycerol, 0.4-0.5mg/ml BSA.

**Immunogen**

A synthesized peptide derived from human MEK5

**Purification**

Affinity-chromatography

**Storage**

**Store at -20°C for one year. For short term storage and frequent use, store at 4°C for up to one month. Avoid repeated freeze-thaw cycles.**

**Anti-MEK5 Rabbit Monoclonal Antibody - Protein Information**

**Name** MAP2K5

**Synonyms** MEK5, MKK5, PRKMK5

**Function**

Acts as a scaffold for the formation of a ternary MAP3K2/MAP3K3-MAP3K5-MAPK7 signaling complex. Activation of this pathway appears to play a critical role in protecting cells from stress-induced apoptosis, neuronal survival and cardiac development and angiogenesis. As part of the MAPK/ERK signaling pathway, acts as a negative regulator of apoptosis in cardiomyocytes via promotion of STUB1/CHIP-mediated ubiquitination and degradation of ICER-type isoforms of CREM (By similarity).

**Tissue Location**

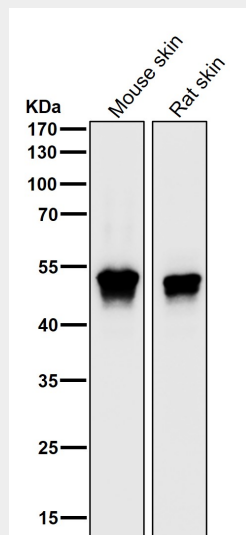
Expressed in many adult tissues. Abundant in heart and skeletal muscle

**Anti-MEK5 Rabbit Monoclonal Antibody - Protocols**

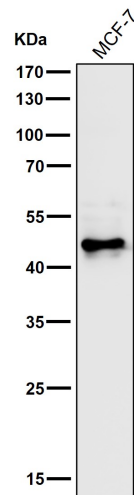
Provided below are standard protocols that you may find useful for product applications.

- [Western Blot](#)
- [Blocking Peptides](#)
- [Dot Blot](#)
- [Immunohistochemistry](#)
- [Immunofluorescence](#)
- [Immunoprecipitation](#)
- [Flow Cytometry](#)
- [Cell Culture](#)

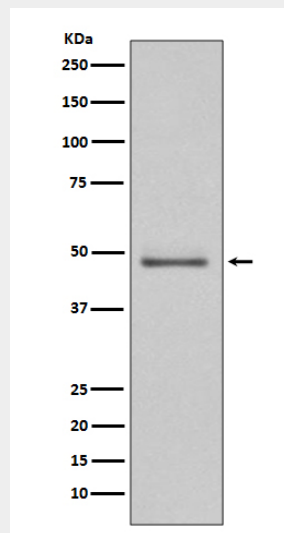
**Anti-MEK5 Rabbit Monoclonal Antibody - Images**



All lanes use the Antibody at 1:2K dilution for 1 hour at room temperature.



All lanes use the Antibody at 1:2K dilution for 1 hour at room temperature.



Western blot analysis of MEK5 expression in HeLa cell lysate.