

**Anti-SOX1 Rabbit Monoclonal Antibody**  
Catalog # ABO13453**Specification****Anti-SOX1 Rabbit Monoclonal Antibody - Product Information**

Application	WB, IHC, IF, ICC
Primary Accession	<a href="#">O00570</a>
Host	Rabbit
Isotype	Rabbit IgG
Reactivity	Rat, Human, Mouse
Clonality	Monoclonal
Format	Liquid

**Description**

Anti-SOX1 Rabbit Monoclonal Antibody . Tested in WB, IHC, ICC/IF applications. This antibody reacts with Human, Mouse, Rat.

**Anti-SOX1 Rabbit Monoclonal Antibody - Additional Information**

**Gene ID** 6656

**Other Names**

Transcription factor SOX-1, SOX1

**Calculated MW**

39023 MW KDa

**Application Details**

WB 1:1000-1:2000<br>IHC 1:50-1:200<br>ICC/IF 1:50-1:200

**Subcellular Localization**

Nucleus.

**Tissue Specificity**

Mainly expressed in the developing central nervous system.

**Contents**

Rabbit IgG in phosphate buffered saline, pH 7.4, 150mM NaCl, 0.02% sodium azide and 50% glycerol, 0.4-0.5mg/ml BSA.

**Immunogen**

A synthesized peptide derived from human SOX1

**Purification**

Affinity-chromatography

Storage

**Store at -20°C for one year. For short term storage and frequent use, store at 4°C for up to one month. Avoid repeated freeze-thaw cycles.**

## Anti-SOX1 Rabbit Monoclonal Antibody - Protein Information

**Name** SOX1

### Function

Transcriptional activator. May function as a switch in neuronal development. Keeps neural cells undifferentiated by counteracting the activity of proneural proteins and suppresses neuronal differentiation (By similarity).

### Cellular Location

Nucleus.

### Tissue Location

Mainly expressed in the developing central nervous system

## Anti-SOX1 Rabbit Monoclonal Antibody - Protocols

Provided below are standard protocols that you may find useful for product applications.

- [Western Blot](#)
- [Blocking Peptides](#)
- [Dot Blot](#)
- [Immunohistochemistry](#)
- [Immunofluorescence](#)
- [Immunoprecipitation](#)
- [Flow Cytometry](#)
- [Cell Culture](#)

## Anti-SOX1 Rabbit Monoclonal Antibody - Images

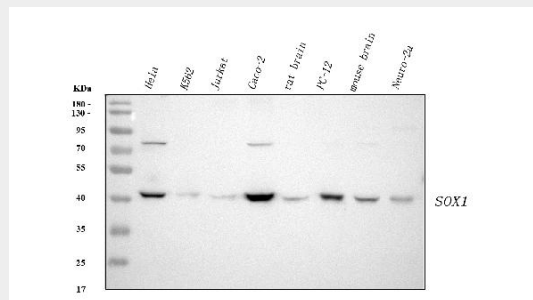


Figure 1. Western blot analysis of SOX1 using anti-SOX1 antibody (M08724).

Electrophoresis was performed on a 5-20% SDS-PAGE gel at 70V (Stacking gel) / 90V (Resolving gel) for 2-3 hours. The sample well of each lane was loaded with 30 ug of sample under reducing conditions.

Lane 1: human Hela whole cell lysates,  
Lane 2: human K562 whole cell lysates,  
Lane 3: human Jurkat whole cell lysates,  
Lane 4: human Caco-2 whole cell lysates,  
Lane 5: rat brain tissue lysates,  
Lane 6: rat PC-12 whole cell lysates,  
Lane 7: mouse brain tissue lysates,  
Lane 8: mouse Neuro-2a whole cell lysates.

After electrophoresis, proteins were transferred to a nitrocellulose membrane at 150 mA for 50-90 minutes. Blocked the membrane with 5% non-fat milk/TBS for 1.5 hour at RT. The membrane was incubated with mouse anti-SOX1 antigen affinity purified monoclonal antibody (Catalog # M08724) at 1:1000 overnight at 4°C, then washed with TBS-0.1%Tween 3 times with 5 minutes each and probed with a goat anti-mouse IgG-HRP secondary antibody at a dilution of 1:10000 for 1.5 hour at RT. The signal is developed using an Enhanced Chemiluminescent detection (ECL) kit (Catalog # EK1002) with Tanon 5200 system. A specific band was detected for SOX1 at approximately 39 kDa. The expected band size for SOX1 is at 39 kDa.