

**Anti-CD10 MME Rabbit Monoclonal Antibody**  
Catalog # ABO13441

**Specification**

---

**Anti-CD10 MME Rabbit Monoclonal Antibody - Product Information**

Application	WB, FC
Primary Accession	<a href="#">P08473</a>
Host	Rabbit
Isotype	Rabbit IgG
Reactivity	Rat, Human, Mouse
Clonality	Monoclonal
Format	Liquid

**Description**

Anti-CD10 MME Rabbit Monoclonal Antibody . Tested in WB, Flow Cytometry applications. This antibody reacts with Human, Mouse, Rat.

**Anti-CD10 MME Rabbit Monoclonal Antibody - Additional Information**

**Gene ID** 4311

**Other Names**

Neprilysin, 3.4.24.11, Atriopeptidase, Common acute lymphocytic leukemia antigen, CALLA, Enkephalinase, Neutral endopeptidase 24.11, NEP, Neutral endopeptidase, Skin fibroblast elastase, SFE, CD10, MME {ECO:0000303|PubMed:27588448, ECO:0000312|HGNC:HGNC:7154}

**Calculated MW**

85514 MW KDa

**Application Details**

WB 1:1000-1:2000<br>FC 1:50

**Subcellular Localization**

Cell membrane; Single-pass type II membrane protein.

**Contents**

Rabbit IgG in phosphate buffered saline, pH 7.4, 150mM NaCl, 0.02% sodium azide and 50% glycerol, 0.4-0.5mg/ml BSA.

**Immunogen**

A synthesized peptide derived from human CD10

**Purification**

Affinity-chromatography

**Storage**

**Store at -20°C for one year. For short term storage and frequent use, store at 4°C for up to one month. Avoid repeated freeze-thaw cycles.**

## Anti-CD10 MME Rabbit Monoclonal Antibody - Protein Information

**Name** MME {ECO:0000303|PubMed:27588448, ECO:0000312|HGNC:HGNC:7154}

### Function

Thermolysin-like specificity, but is almost confined on acting on polypeptides of up to 30 amino acids (PubMed:<a href="http://www.uniprot.org/citations/15283675" target="\_blank">15283675</a>, PubMed:<a href="http://www.uniprot.org/citations/6208535" target="\_blank">6208535</a>, PubMed:<a href="http://www.uniprot.org/citations/6349683" target="\_blank">6349683</a>, PubMed:<a href="http://www.uniprot.org/citations/8168535" target="\_blank">8168535</a>). Biologically important in the destruction of opioid peptides such as Met- and Leu-enkephalins by cleavage of a Gly-Phe bond (PubMed:<a href="http://www.uniprot.org/citations/17101991" target="\_blank">17101991</a>, PubMed:<a href="http://www.uniprot.org/citations/6349683" target="\_blank">6349683</a>). Catalyzes cleavage of bradykinin, substance P and neurotensin peptides (PubMed:<a href="http://www.uniprot.org/citations/6208535" target="\_blank">6208535</a>). Able to cleave angiotensin-1, angiotensin-2 and angiotensin 1-9 (PubMed:<a href="http://www.uniprot.org/citations/15283675" target="\_blank">15283675</a>, PubMed:<a href="http://www.uniprot.org/citations/6349683" target="\_blank">6349683</a>). Involved in the degradation of atrial natriuretic factor (ANF) and brain natriuretic factor (BNP(1-32)) (PubMed:<a href="http://www.uniprot.org/citations/16254193" target="\_blank">16254193</a>, PubMed:<a href="http://www.uniprot.org/citations/2531377" target="\_blank">2531377</a>, PubMed:<a href="http://www.uniprot.org/citations/2972276" target="\_blank">2972276</a>). Displays UV-inducible elastase activity toward skin preelastic and elastic fibers (PubMed:<a href="http://www.uniprot.org/citations/20876573" target="\_blank">20876573</a>).

### Cellular Location

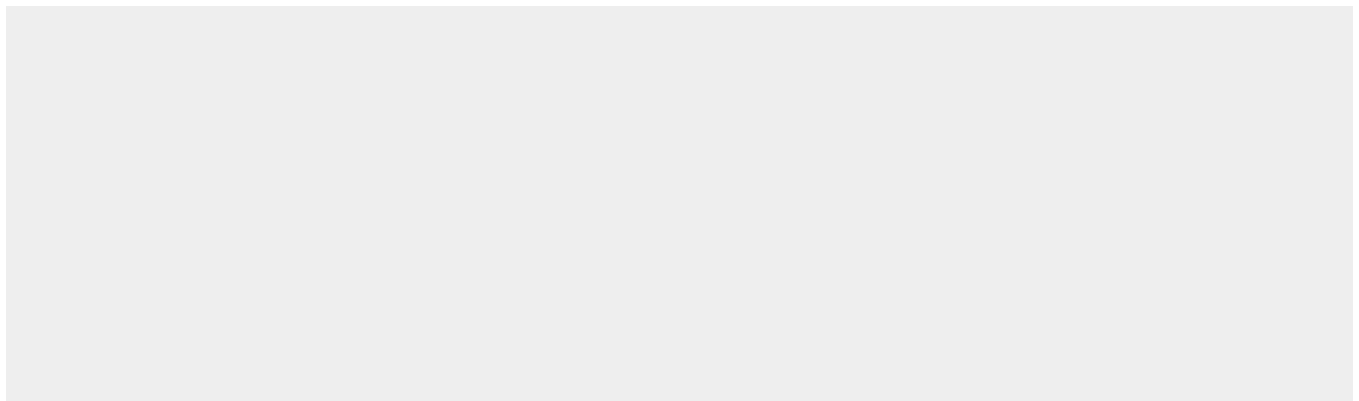
Cell membrane; Single-pass type II membrane protein

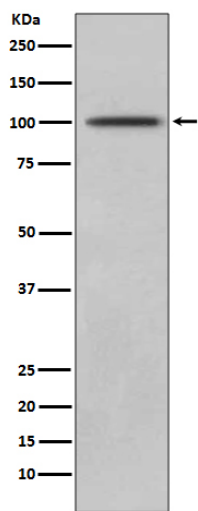
## Anti-CD10 MME Rabbit Monoclonal Antibody - Protocols

Provided below are standard protocols that you may find useful for product applications.

- [Western Blot](#)
- [Blocking Peptides](#)
- [Dot Blot](#)
- [Immunohistochemistry](#)
- [Immunofluorescence](#)
- [Immunoprecipitation](#)
- [Flow Cytometry](#)
- [Cell Culture](#)

## Anti-CD10 MME Rabbit Monoclonal Antibody - Images





Western blot analysis of CD10 expression in Jurkat lysate.