

Anti-Oct4 POU5F1 Rabbit Monoclonal Antibody
Catalog # ABO13439**Specification****Anti-Oct4 POU5F1 Rabbit Monoclonal Antibody - Product Information**

Application	WB, IHC, IF, ICC, IP
Primary Accession	Q01860
Host	Rabbit
Isotype	Rabbit IgG
Reactivity	Human, Mouse
Clonality	Monoclonal
Format	Liquid

Description

Anti-Oct4 POU5F1 Rabbit Monoclonal Antibody . Tested in WB, IHC, ICC/IF, IP applications. This antibody reacts with Human, Mouse.

Anti-Oct4 POU5F1 Rabbit Monoclonal Antibody - Additional Information

Gene ID 5460

Other Names

POU domain, class 5, transcription factor 1, Octamer-binding protein 3, Oct-3, Octamer-binding protein 4, Oct-4, Octamer-binding transcription factor 3, OTF-3, POU5F1, OCT3, OCT4, OTF3

Calculated MW

38571 MW KDa

Application Details

WB 1:500-1:1000
IHC 1:50-1:200
ICC/IF 1:50-1:200
IP 1:50

Subcellular Localization

Cytoplasm. Nucleus. Expressed in a diffuse and slightly punctuate pattern.

Tissue Specificity

Expressed in developing brain. Highest levels found in specific cell layers of the cortex, the olfactory bulb, the hippocampus and the cerebellum. Low levels of expression in adult tissues..

Contents

Rabbit IgG in phosphate buffered saline, pH 7.4, 150mM NaCl, 0.02% sodium azide and 50% glycerol, 0.4-0.5mg/ml BSA.

Immunogen

A synthesized peptide derived from human Oct4

Purification

Affinity-chromatography

Storage

Store at -20°C for one year. For short term storage and frequent use, store at 4°C for

up to one month. Avoid repeated
freeze-thaw cycles.

Anti-Oct4 POU5F1 Rabbit Monoclonal Antibody - Protein Information

Name POU5F1

Synonyms OCT3, OCT4, OTF3

Function

Transcription factor that binds to the octamer motif (5'- ATTTGCAT-3'). Forms a trimeric complex with SOX2 or SOX15 on DNA and controls the expression of a number of genes involved in embryonic development such as YES1, FGF4, UTF1 and ZFP206. Critical for early embryogenesis and for embryonic stem cell pluripotency.

Cellular Location

Cytoplasm. Nucleus. Note=Expressed in a diffuse and slightly punctuate pattern. Colocalizes with MAPK8 and MAPK9 in the nucleus. {ECO:0000250|UniProtKB:P20263, ECO:0000269|PubMed:18191611, ECO:0000269|PubMed:19274063, ECO:0000269|PubMed:23024368}

Tissue Location

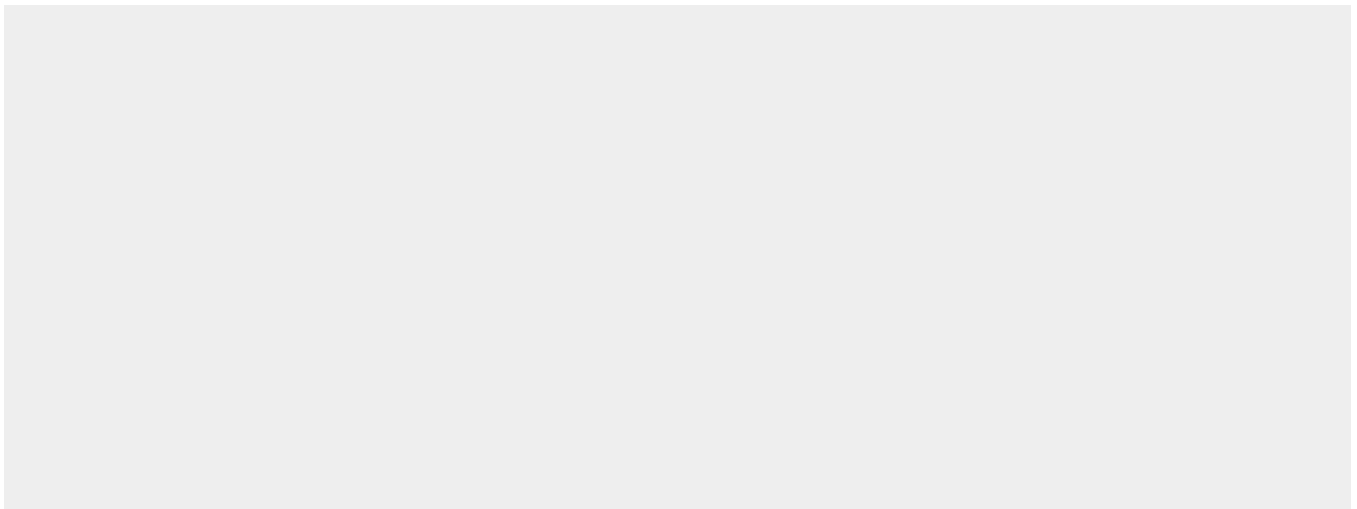
Expressed in developing brain. Highest levels found in specific cell layers of the cortex, the olfactory bulb, the hippocampus and the cerebellum. Low levels of expression in adult tissues.

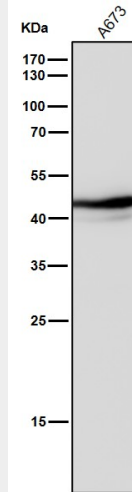
Anti-Oct4 POU5F1 Rabbit Monoclonal Antibody - Protocols

Provided below are standard protocols that you may find useful for product applications.

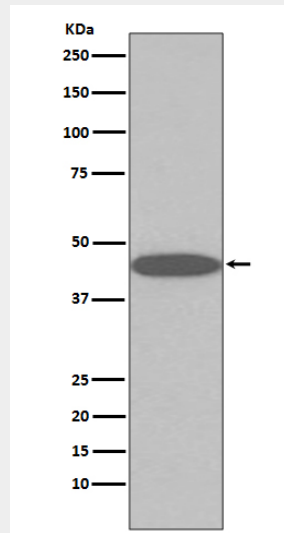
- [Western Blot](#)
- [Blocking Peptides](#)
- [Dot Blot](#)
- [Immunohistochemistry](#)
- [Immunofluorescence](#)
- [Immunoprecipitation](#)
- [Flow Cytometry](#)
- [Cell Culture](#)

Anti-Oct4 POU5F1 Rabbit Monoclonal Antibody - Images

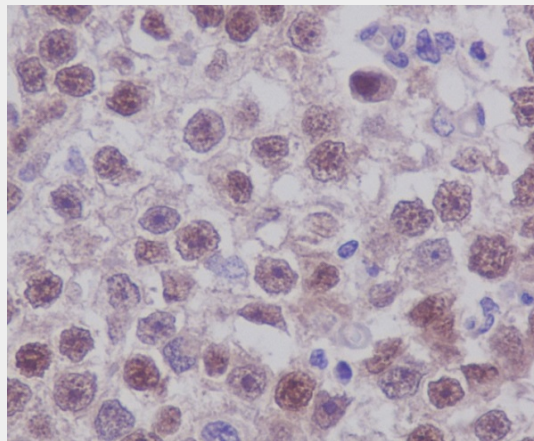




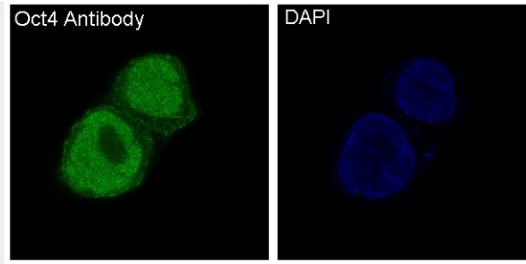
All lanes use the Antibody at 1:2k dilution for 1 hour at room temperature.



Western blot analysis of Oct4 expression in NCCIT cell lysate.



Immunohistochemical analysis of paraffin-embedded human seminoma, using Oct4 Antibody.



Immunofluorescent analysis of NCCIT cells, using Oct4 Antibody.