

**Anti-SHP2 PTPN11 Rabbit Monoclonal Antibody**  
Catalog # ABO13432

**Specification**

**Anti-SHP2 PTPN11 Rabbit Monoclonal Antibody - Product Information**

Application	WB, IHC, IF, ICC, IP
Primary Accession	<a href="#">Q06124</a>
Host	Rabbit
Isotype	Rabbit IgG
Reactivity	Human
Clonality	Monoclonal
Format	Liquid

**Description**

Anti-SHP2 PTPN11 Rabbit Monoclonal Antibody . Tested in WB, IHC, ICC/IF, IP applications. This antibody reacts with Human.

**Anti-SHP2 PTPN11 Rabbit Monoclonal Antibody - Additional Information**

**Gene ID** 5781

**Other Names**

Tyrosine-protein phosphatase non-receptor type 11, 3.1.3.48, Protein-tyrosine phosphatase 1D, PTP-1D, Protein-tyrosine phosphatase 2C, PTP-2C, SH-PTP2, SHP-2, Shp2, SH-PTP3, PTPN11, PTP2C, SHPTP2

**Calculated MW**

68436 MW KDa

**Application Details**

WB 1:1000-1:2000<br>IHC 1:50-1:200<br>ICC/IF 1:50-1:200<br>IP 1:50

**Subcellular Localization**

Cytoplasm.

**Tissue Specificity**

Widely expressed, with highest levels in heart, brain, and skeletal muscle..

**Contents**

Rabbit IgG in phosphate buffered saline, pH 7.4, 150mM NaCl, 0.02% sodium azide and 50% glycerol, 0.4-0.5mg/ml BSA.

**Immunogen**

A synthesized peptide derived from human SHP2

**Purification**

Affinity-chromatography

**Storage**

**Store at -20°C for one year. For short term storage and frequent use, store at 4°C for**

up to one month. Avoid repeated  
freeze-thaw cycles.

## Anti-SHP2 PTPN11 Rabbit Monoclonal Antibody - Protein Information

**Name** PTPN11

**Synonyms** PTP2C, SHPTP2

### Function

Acts downstream of various receptor and cytoplasmic protein tyrosine kinases to participate in the signal transduction from the cell surface to the nucleus (PubMed:<a href="http://www.uniprot.org/citations/10655584" target="\_blank">10655584</a>, PubMed:<a href="http://www.uniprot.org/citations/18559669" target="\_blank">18559669</a>, PubMed:<a href="http://www.uniprot.org/citations/18829466" target="\_blank">18829466</a>, PubMed:<a href="http://www.uniprot.org/citations/26742426" target="\_blank">26742426</a>, PubMed:<a href="http://www.uniprot.org/citations/28074573" target="\_blank">28074573</a>). Positively regulates MAPK signal transduction pathway (PubMed:<a href="http://www.uniprot.org/citations/28074573" target="\_blank">28074573</a>). Dephosphorylates GAB1, ARHGAP35 and EGFR (PubMed:<a href="http://www.uniprot.org/citations/28074573" target="\_blank">28074573</a>). Dephosphorylates ROCK2 at 'Tyr-722' resulting in stimulation of its RhoA binding activity (PubMed:<a href="http://www.uniprot.org/citations/18559669" target="\_blank">18559669</a>). Dephosphorylates CDC73 (PubMed:<a href="http://www.uniprot.org/citations/26742426" target="\_blank">26742426</a>). Dephosphorylates SOX9 on tyrosine residues, leading to inactivate SOX9 and promote ossification (By similarity). Dephosphorylates tyrosine-phosphorylated NEDD9/CAS-L (PubMed:<a href="http://www.uniprot.org/citations/19275884" target="\_blank">19275884</a>).

### Cellular Location

Cytoplasm. Nucleus

### Tissue Location

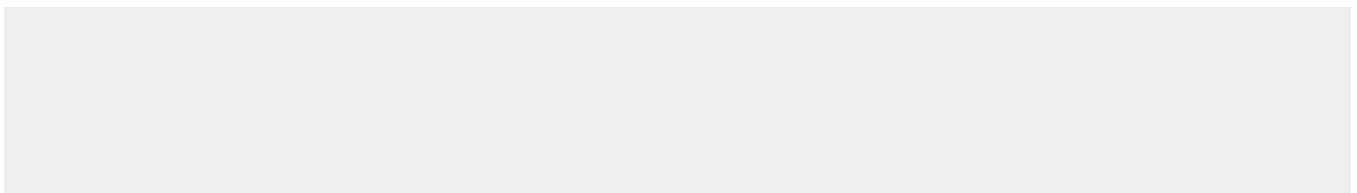
Widely expressed, with highest levels in heart, brain, and skeletal muscle.

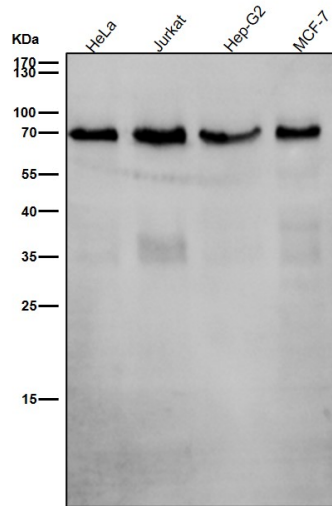
## Anti-SHP2 PTPN11 Rabbit Monoclonal Antibody - Protocols

Provided below are standard protocols that you may find useful for product applications.

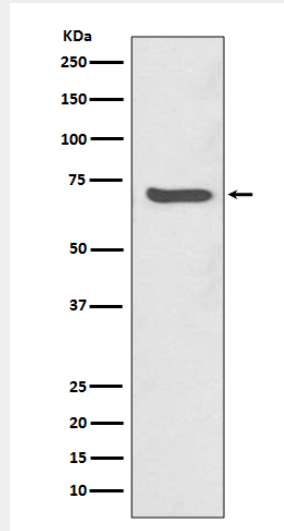
- [Western Blot](#)
- [Blocking Peptides](#)
- [Dot Blot](#)
- [Immunohistochemistry](#)
- [Immunofluorescence](#)
- [Immunoprecipitation](#)
- [Flow Cytometry](#)
- [Cell Culture](#)

## Anti-SHP2 PTPN11 Rabbit Monoclonal Antibody - Images

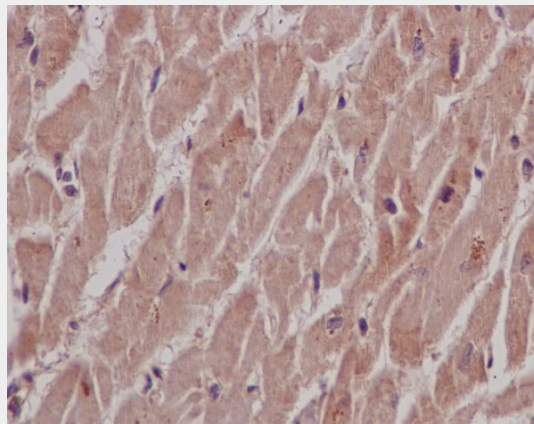




All lanes use the Antibody at 1:1K dilution for 1 hour at room temperature.



Western blot analysis of SHP2 expression in Jurkat cell lysate.



Immunohistochemical analysis of paraffin-embedded human heart, using SHP2 Antibody.