

Anti-CYBB/Nox2 Rabbit Monoclonal Antibody
Catalog # ABO13427**Specification****Anti-CYBB/Nox2 Rabbit Monoclonal Antibody - Product Information**

Application	WB
Primary Accession	P04839
Host	Rabbit
Isotype	Rabbit IgG
Reactivity	Rat, Human, Mouse
Clonality	Monoclonal
Format	Liquid

Description

Anti-CYBB/Nox2 Rabbit Monoclonal Antibody . Tested in WB application. This antibody reacts with Human, Mouse, Rat.

Anti-CYBB/Nox2 Rabbit Monoclonal Antibody - Additional Information

Gene ID 1536

Other Names

Cytochrome b-245 heavy chain, 1.-.-., CGD91-phox, Cytochrome b(558) subunit beta, Cytochrome b558 subunit beta, Heme-binding membrane glycoprotein gp91phox, NADPH oxidase 2, Neutrophil cytochrome b 91 kDa polypeptide, Superoxide-generating NADPH oxidase heavy chain subunit, gp91-1, gp91-phox, p22 phagocyte B-cytochrome, CYBB ([HGNC:2578](http://www.genenames.org/cgi-bin/gene_symbol_report?hgnc_id=2578)), NOX2

Calculated MW

65336 MW KDa

Application Details

WB 1:1000-1:2000

Subcellular Localization

Cell membrane; Multi-pass membrane protein.

Tissue Specificity

Detected in neutrophils (at protein level)..

Contents

Rabbit IgG in phosphate buffered saline, pH 7.4, 150mM NaCl, 0.02% sodium azide and 50% glycerol, 0.4-0.5mg/ml BSA.

Immunogen

A synthesized peptide derived from human CYBB

Purification

Affinity-chromatography

Storage

Store at -20°C for one year. For short term storage and frequent use, store at 4°C for up to one month. Avoid repeated freeze-thaw cycles.

Anti-CYBB/Nox2 Rabbit Monoclonal Antibody - Protein Information

Name CYBB ([HGNC:2578](#))

Synonyms NOX2

Function

Critical component of the membrane-bound oxidase of phagocytes that generates superoxide. It is the terminal component of a respiratory chain that transfers single electrons from cytoplasmic NADPH across the plasma membrane to molecular oxygen on the exterior. Also functions as a voltage-gated proton channel that mediates the H(+) currents of resting phagocytes. It participates in the regulation of cellular pH and is blocked by zinc.

Cellular Location

Cell membrane; Multi-pass membrane protein. Note=As unassembled monomer may localize to the endoplasmic reticulum

Tissue Location

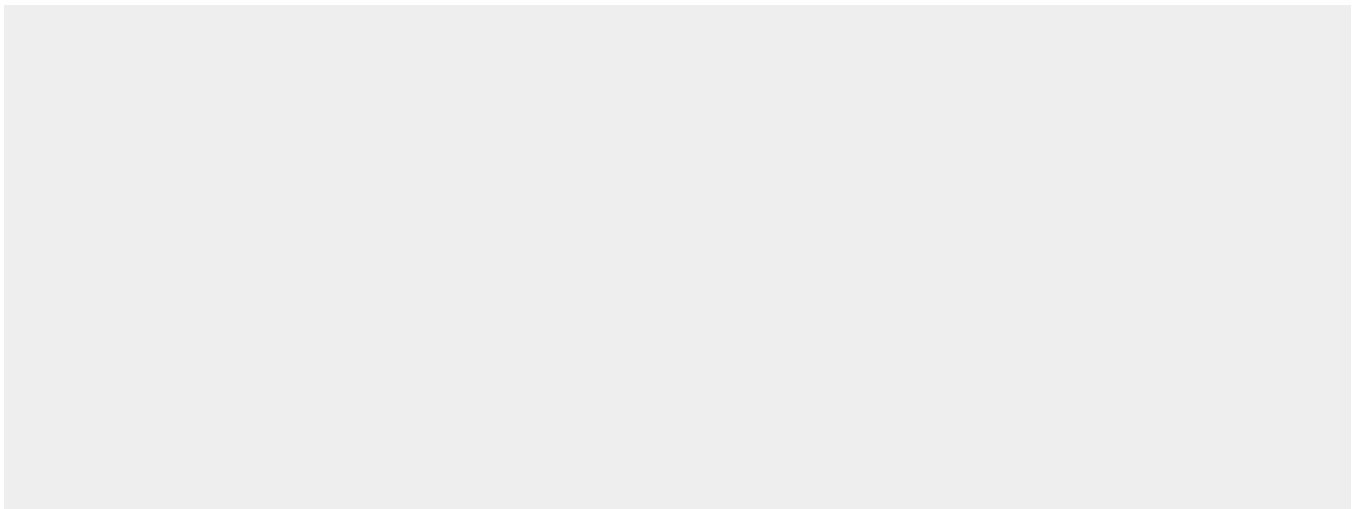
Detected in neutrophils (at protein level).

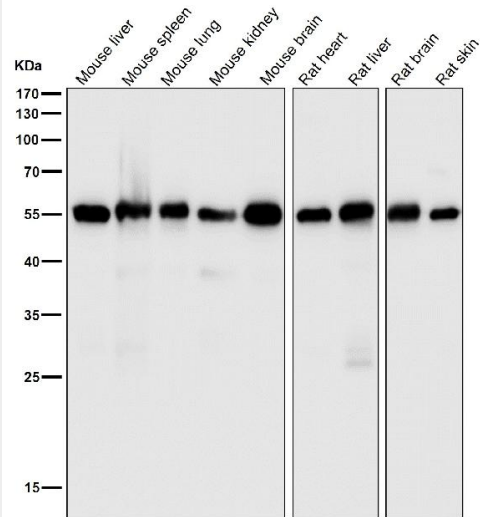
Anti-CYBB/Nox2 Rabbit Monoclonal Antibody - Protocols

Provided below are standard protocols that you may find useful for product applications.

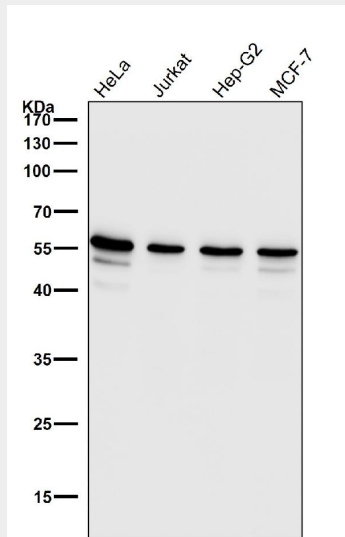
- [Western Blot](#)
- [Blocking Peptides](#)
- [Dot Blot](#)
- [Immunohistochemistry](#)
- [Immunofluorescence](#)
- [Immunoprecipitation](#)
- [Flow Cytometry](#)
- [Cell Culture](#)

Anti-CYBB/Nox2 Rabbit Monoclonal Antibody - Images

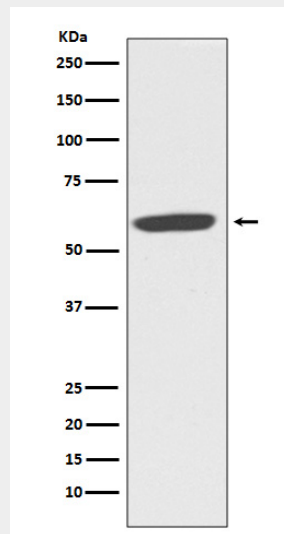




All lanes use the Antibody at 1:5K dilution for 1 hour at room temperature.



All lanes use the Antibody at 1:1K dilution for 1 hour at room temperature.



Western blot analysis of NOX2/CYBB/gp91phox expression in MCF-7 cell lysate.