

Anti-DKK1 Rabbit Monoclonal Antibody
Catalog # ABO13423**Specification**

Anti-DKK1 Rabbit Monoclonal Antibody - Product Information

Application	WB, IHC, IF, ICC, FC
Primary Accession	O94907
Host	Rabbit
Isotype	Rabbit IgG
Reactivity	Rat, Human
Clonality	Monoclonal
Format	Liquid

Description

Anti-DKK1 Rabbit Monoclonal Antibody . Tested in WB, IHC, ICC/IF, Flow Cytometry applications. This antibody reacts with Human, Rat.

Anti-DKK1 Rabbit Monoclonal Antibody - Additional Information

Gene ID 22943

Other Names

Dickkopf-related protein 1, Dickkopf-1, Dkk-1, hDkk-1, SK, DKK1

Calculated MW

28672 MW KDa

Application Details

WB 1:1000-1:2000
IHC 1:50-1:200
ICC/IF 1:50-1:200
FC 1:50

Subcellular Localization

Secreted.

Tissue Specificity

Placenta.

Contents

Rabbit IgG in phosphate buffered saline, pH 7.4, 150mM NaCl, 0.02% sodium azide and 50% glycerol, 0.4-0.5mg/ml BSA.

Immunogen

A synthesized peptide derived from human DKK1

Purification

Affinity-chromatography

Storage

Store at -20°C for one year. For short term storage and frequent use, store at 4°C for up to one month. Avoid repeated freeze-thaw cycles.

Anti-DKK1 Rabbit Monoclonal Antibody - Protein Information

Name DKK1

Function

Antagonizes canonical Wnt signaling by inhibiting LRP5/6 interaction with Wnt and by forming a ternary complex with the transmembrane protein KREMEN that promotes internalization of LRP5/6 (PubMed:22000856). DKKs play an important role in vertebrate development, where they locally inhibit Wnt regulated processes such as antero-posterior axial patterning, limb development, somitogenesis and eye formation. In the adult, Dkks are implicated in bone formation and bone disease, cancer and Alzheimer disease (PubMed:17143291). Inhibits the pro-apoptotic function of KREMEN1 in a Wnt-independent manner, and has anti-apoptotic activity (By similarity).

Cellular Location

Secreted.

Tissue Location

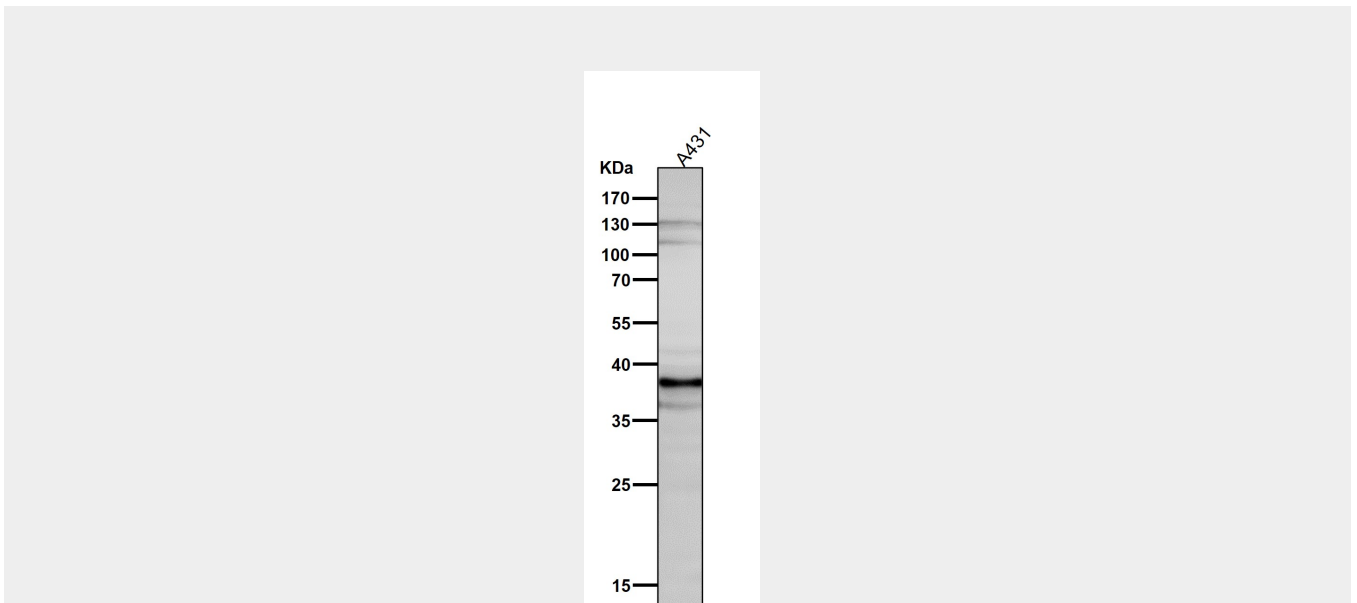
Placenta.

Anti-DKK1 Rabbit Monoclonal Antibody - Protocols

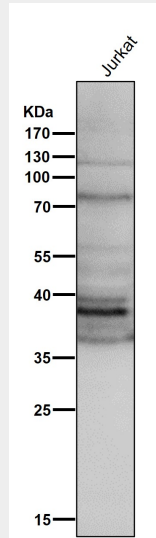
Provided below are standard protocols that you may find useful for product applications.

- [Western Blot](#)
- [Blocking Peptides](#)
- [Dot Blot](#)
- [Immunohistochemistry](#)
- [Immunofluorescence](#)
- [Immunoprecipitation](#)
- [Flow Cytometry](#)
- [Cell Culture](#)

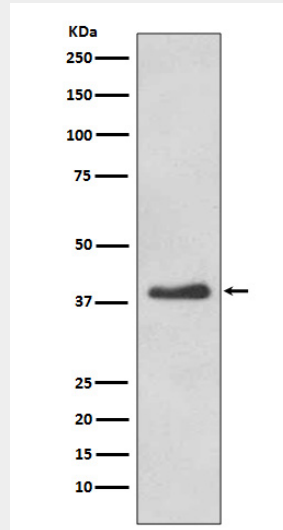
Anti-DKK1 Rabbit Monoclonal Antibody - Images



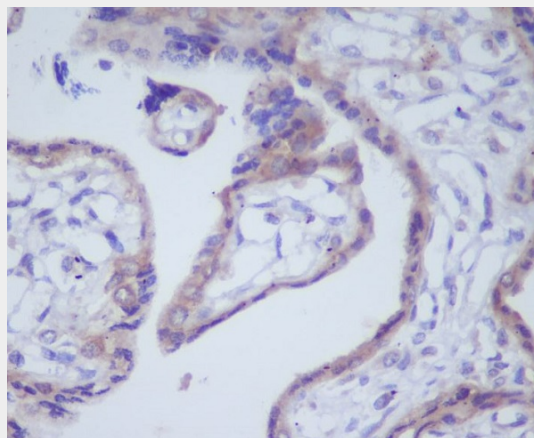
All lanes use the Antibody at 1:5K dilution for 1 hour at room temperature.



All lanes use the Antibody at 1:5K dilution for 1 hour at room temperature.



Western blot analysis of DKK1 expression in HeLa cell lysate.



Immunohistochemical analysis of paraffin-embedded human placenta, using DKK1 Antibody.