

Anti-ASNS/Asparagine Synthetase Rabbit Monoclonal Antibody Catalog # ABO13418

Specification

Anti-ASNS/Asparagine Synthetase Rabbit Monoclonal Antibody - Product Information

Application	WB, IHC, IF, ICC
Primary Accession	P08243
Host	Rabbit
Isotype	Rabbit IgG
Reactivity	Rat, Human, Mouse
Clonality	Monoclonal
Format	Liquid

Description

Anti-ASNS/Asparagine Synthetase Rabbit Monoclonal Antibody . Tested in WB, IHC, ICC/IF applications. This antibody reacts with Human, Mouse, Rat.

Anti-ASNS/Asparagine Synthetase Rabbit Monoclonal Antibody - Additional Information

Gene ID 440

Other Names

Asparagine synthetase [glutamine-hydrolyzing], 6.3.5.4, Cell cycle control protein TS11, Glutamine-dependent asparagine synthetase, ASNS, TS11

Calculated MW

64370 MW KDa

Application Details

WB 1:1000-1:2000
IHC 1:50-1:200
ICC/IF 1:50-1:200

Contents

Rabbit IgG in phosphate buffered saline, pH 7.4, 150mM NaCl, 0.02% sodium azide and 50% glycerol, 0.4-0.5mg/ml BSA.

Immunogen

A synthesized peptide derived from human ASNS

Purification

Affinity-chromatography

Storage

Store at -20°C for one year. For short term storage and frequent use, store at 4°C for up to one month. Avoid repeated freeze-thaw cycles.

Anti-ASNS/Asparagine Synthetase Rabbit Monoclonal Antibody - Protein Information

Name ASNS

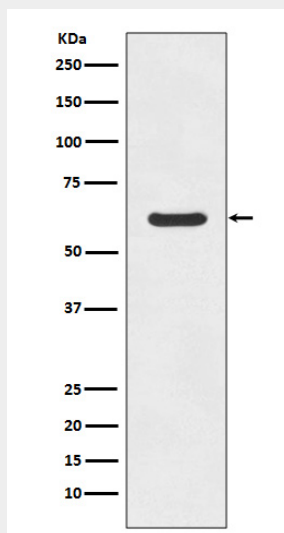
Synonyms TS11

Anti-ASNS/Asparagine Synthetase Rabbit Monoclonal Antibody - Protocols

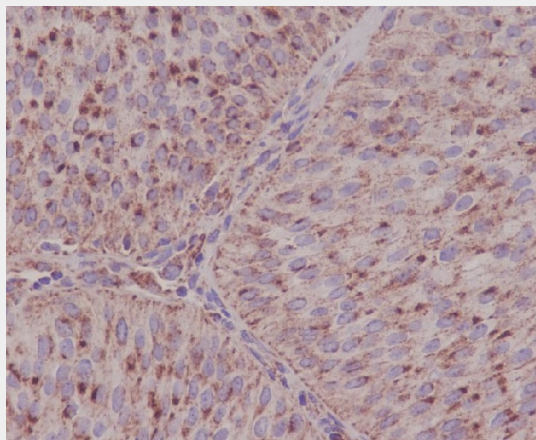
Provided below are standard protocols that you may find useful for product applications.

- [Western Blot](#)
- [Blocking Peptides](#)
- [Dot Blot](#)
- [Immunohistochemistry](#)
- [Immunofluorescence](#)
- [Immunoprecipitation](#)
- [Flow Cytometry](#)
- [Cell Culture](#)

Anti-ASNS/Asparagine Synthetase Rabbit Monoclonal Antibody - Images



Western blot analysis of ASNS expression in K562 cell lysate.



Immunohistochemical analysis of paraffin-embedded human bladder, using ASNS Antibody.