

**Anti-ATG7/Apg7 Rabbit Monoclonal Antibody**  
Catalog # ABO13409**Specification****Anti-ATG7/Apg7 Rabbit Monoclonal Antibody - Product Information**

Application	WB, IHC, IF, ICC, IP, FC
Primary Accession	<a href="#">O95352</a>
Host	Rabbit
Isotype	Rabbit IgG
Reactivity	Human
Clonality	Monoclonal
Format	Liquid

**Description**

Anti-ATG7/Apg7 Rabbit Monoclonal Antibody . Tested in WB, IHC, ICC/IF, IP, Flow Cytometry applications. This antibody reacts with Human.

**Anti-ATG7/Apg7 Rabbit Monoclonal Antibody - Additional Information**

**Gene ID** 10533

**Other Names**

Ubiquitin-like modifier-activating enzyme ATG7, ATG12-activating enzyme E1 ATG7, Autophagy-related protein 7, APG7-like, hAGP7, Ubiquitin-activating enzyme E1-like protein, ATG7 ([HGNC:16935](http://www.genenames.org/cgi-bin/gene_symbol_report?hgnc_id=16935)), APG7L

**Calculated MW**

77960 MW KDa

**Application Details**

WB 1:10000-1:50000<br>IHC 1:50-1:200<br>ICC/IF 1:50-1:200<br>IP 1:20<br>FC 1:20

**Subcellular Localization**

Cytoplasm. Preautophagosomal structure. Localizes also to discrete punctae along the ciliary axoneme and to the base of the ciliary axoneme..

**Tissue Specificity**

Widely expressed, especially in kidney, liver, lymph nodes and bone marrow..

**Contents**

Rabbit IgG in phosphate buffered saline, pH 7.4, 150mM NaCl, 0.02% sodium azide and 50% glycerol, 0.4-0.5mg/ml BSA.

**Immunogen**

A synthesized peptide derived from human ATG7

**Purification**

Affinity-chromatography

**Storage**

**Store at -20°C for one year. For short term storage and frequent use, store at 4°C for up to one month. Avoid repeated freeze-thaw cycles.**

**Anti-ATG7/Apg7 Rabbit Monoclonal Antibody - Protein Information**

**Name** ATG7 ([HGNC:16935](#))

**Synonyms** APG7L

**Function**

E1-like activating enzyme involved in the 2 ubiquitin-like systems required for cytoplasm to vacuole transport (Cvt) and autophagy. Activates ATG12 for its conjugation with ATG5 as well as the ATG8 family proteins for their conjugation with phosphatidylethanolamine. Both systems are needed for the ATG8 association to Cvt vesicles and autophagosomes membranes. Required for autophagic death induced by caspase-8 inhibition. Facilitates LC3-I lipidation with phosphatidylethanolamine to form LC3-II which is found on autophagosomal membranes (PubMed:<a href="http://www.uniprot.org/citations/34161705" target="\_blank">34161705</a>). Required for mitophagy which contributes to regulate mitochondrial quantity and quality by eliminating the mitochondria to a basal level to fulfill cellular energy requirements and preventing excess ROS production. Modulates p53/TP53 activity to regulate cell cycle and survival during metabolic stress. Also plays a key role in the maintenance of axonal homeostasis, the prevention of axonal degeneration, the maintenance of hematopoietic stem cells, the formation of Paneth cell granules, as well as in adipose differentiation. Plays a role in regulating the liver clock and glucose metabolism by mediating the autophagic degradation of CRY1 (clock repressor) in a time-dependent manner (By similarity).

**Cellular Location**

Cytoplasm. Preautophagosomal structure. Note=Localizes also to discrete punctae along the ciliary axoneme and to the base of the ciliary axoneme

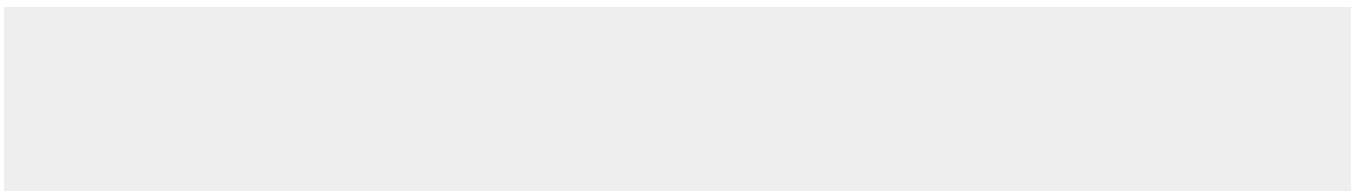
**Tissue Location**

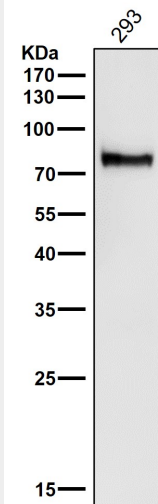
Widely expressed, especially in kidney, liver, lymph nodes and bone marrow.

**Anti-ATG7/Apg7 Rabbit Monoclonal Antibody - Protocols**

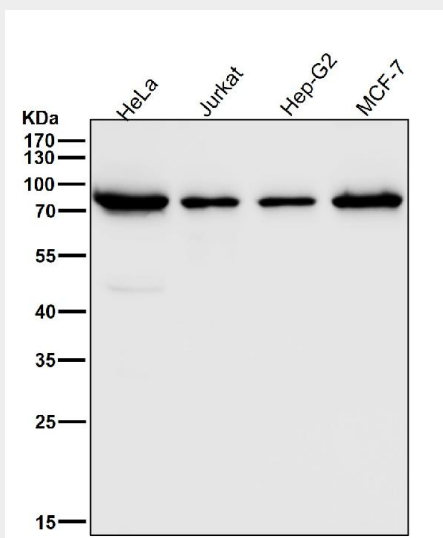
Provided below are standard protocols that you may find useful for product applications.

- [Western Blot](#)
- [Blocking Peptides](#)
- [Dot Blot](#)
- [Immunohistochemistry](#)
- [Immunofluorescence](#)
- [Immunoprecipitation](#)
- [Flow Cytometry](#)
- [Cell Culture](#)

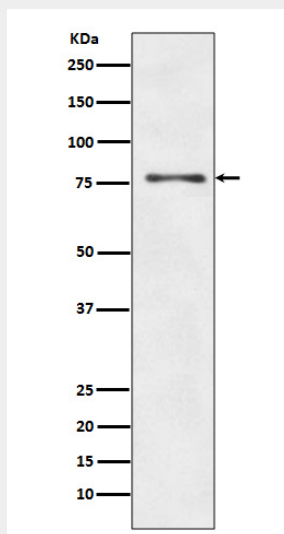
**Anti-ATG7/Apg7 Rabbit Monoclonal Antibody - Images**



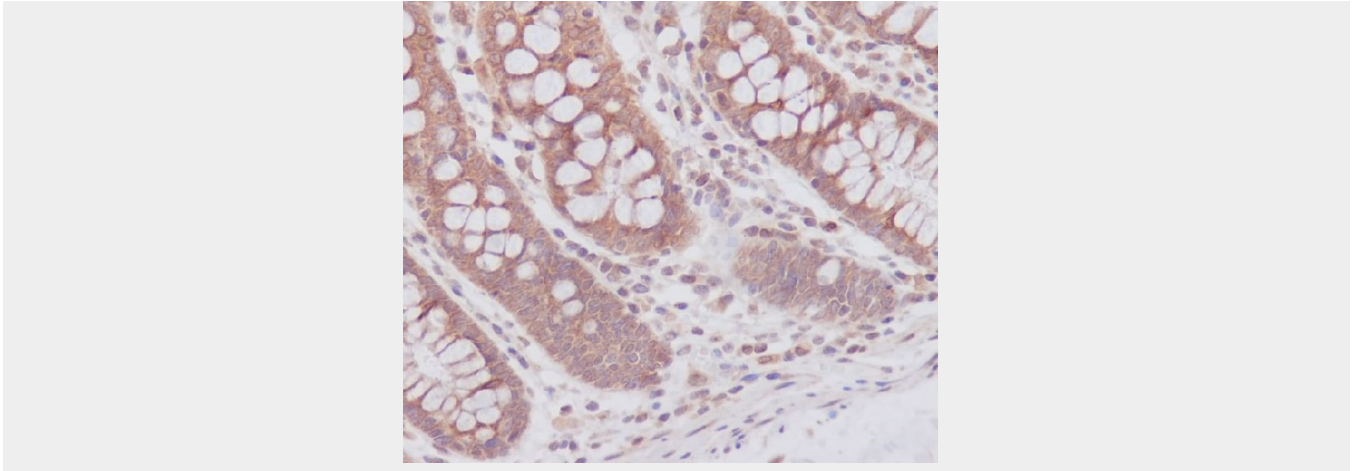
All lanes use the Antibody at 1:1W dilution for 1 hour at room temperature.



All lanes use the Antibody at 1:1W dilution for 1 hour at room temperature.



Western blot analysis of ATG7 expression in HepG2 cell lysate.



Immunohistochemical analysis of paraffin-embedded human colon, using ATG7 Antibody.