

**Anti-Chk2 CHEK2 Rabbit Monoclonal Antibody**  
Catalog # ABO13403**Specification****Anti-Chk2 CHEK2 Rabbit Monoclonal Antibody - Product Information**

Application	WB, IHC, IF, ICC, IP
Primary Accession	<a href="#">O96017</a>
Host	Rabbit
Isotype	Rabbit IgG
Reactivity	Human
Clonality	Monoclonal
Format	Liquid

**Description**

Anti-Chk2 CHEK2 Rabbit Monoclonal Antibody . Tested in WB, IHC, ICC/IF, IP applications. This antibody reacts with Human.

**Anti-Chk2 CHEK2 Rabbit Monoclonal Antibody - Additional Information**

**Gene ID** 11200

**Other Names**

Serine/threonine-protein kinase Chk2, 2.7.11.1, CHK2 checkpoint homolog, Cds1 homolog, Hucds1, hCds1, Checkpoint kinase 2, CHEK2 ([http://www.genenames.org/cgi-bin/gene\\_symbol\\_report?hgnc\\_id=16627](http://www.genenames.org/cgi-bin/gene_symbol_report?hgnc_id=16627) target="\_blank">HGNC:16627</a>), CDS1, CHK2, RAD53

**Calculated MW**

60915 MW KDa

**Application Details**

WB 1:10000-1:20000<br>IHC 1:50-1:200<br>ICC/IF 1:50-1:200<br>IP 1:50

**Subcellular Localization**

Isoform 2: Nucleus. Isoform 10 is present throughout the cell.

**Tissue Specificity**

High expression is found in testis, spleen, colon and peripheral blood leukocytes. Low expression is found in other tissues.

**Contents**

Rabbit IgG in phosphate buffered saline, pH 7.4, 150mM NaCl, 0.02% sodium azide and 50% glycerol, 0.4-0.5mg/ml BSA.

**Immunogen**

A synthesized peptide derived from human Chk2

**Purification**

Affinity-chromatography

**Storage**

**Store at -20°C for one year. For short term storage and frequent use, store at 4°C for up to one month. Avoid repeated freeze-thaw cycles.**

**Anti-Chk2 CHEK2 Rabbit Monoclonal Antibody - Protein Information**

**Name** CHEK2 ([HGNC:16627](#))

**Synonyms** CDS1, CHK2, RAD53

**Function**

Serine/threonine-protein kinase which is required for checkpoint-mediated cell cycle arrest, activation of DNA repair and apoptosis in response to the presence of DNA double-strand breaks. May also negatively regulate cell cycle progression during unperturbed cell cycles. Following activation, phosphorylates numerous effectors preferentially at the consensus sequence [L-X-R-X-X-S/T] (PubMed:<a href="http://www.uniprot.org/citations/37943659" target="\_blank">37943659</a>). Regulates cell cycle checkpoint arrest through phosphorylation of CDC25A, CDC25B and CDC25C, inhibiting their activity. Inhibition of CDC25 phosphatase activity leads to increased inhibitory tyrosine phosphorylation of CDK-cyclin complexes and blocks cell cycle progression. May also phosphorylate NEK6 which is involved in G2/M cell cycle arrest. Regulates DNA repair through phosphorylation of BRCA2, enhancing the association of RAD51 with chromatin which promotes DNA repair by homologous recombination. Also stimulates the transcription of genes involved in DNA repair (including BRCA2) through the phosphorylation and activation of the transcription factor FOXM1. Regulates apoptosis through the phosphorylation of p53/TP53, MDM4 and PML. Phosphorylation of p53/TP53 at 'Ser-20' by CHEK2 may alleviate inhibition by MDM2, leading to accumulation of active p53/TP53. Phosphorylation of MDM4 may also reduce degradation of p53/TP53. Also controls the transcription of pro-apoptotic genes through phosphorylation of the transcription factor E2F1. Tumor suppressor, it may also have a DNA damage-independent function in mitotic spindle assembly by phosphorylating BRCA1. Its absence may be a cause of the chromosomal instability observed in some cancer cells. Promotes the CCAR2-SIRT1 association and is required for CCAR2-mediated SIRT1 inhibition (PubMed:<a href="http://www.uniprot.org/citations/25361978" target="\_blank">25361978</a>). Under oxidative stress, promotes ATG7 ubiquitination by phosphorylating the E3 ubiquitin ligase TRIM32 at 'Ser-55' leading to positive regulation of the autophagosome assembly (PubMed:<a href="http://www.uniprot.org/citations/37943659" target="\_blank">37943659</a>).

**Cellular Location**

[Isoform 2]: Nucleus. Note=Isoform 10 is present throughout the cell [Isoform 7]: Nucleus. [Isoform 12]: Nucleus.

**Tissue Location**

High expression is found in testis, spleen, colon and peripheral blood leukocytes. Low expression is found in other tissues

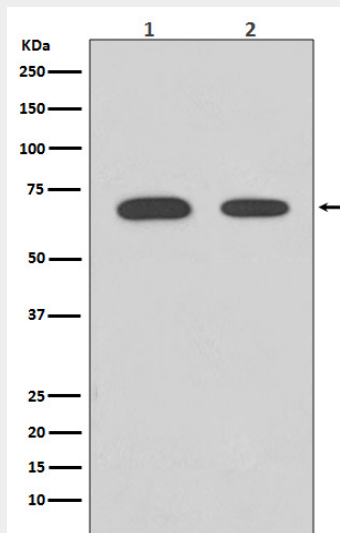
**Anti-Chk2 CHEK2 Rabbit Monoclonal Antibody - Protocols**

Provided below are standard protocols that you may find useful for product applications.

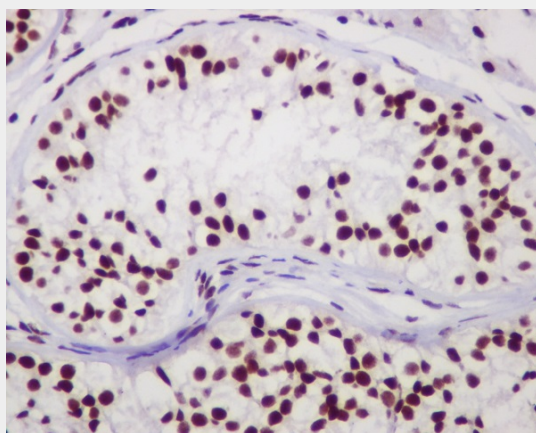
- [Western Blot](#)
- [Blocking Peptides](#)
- [Dot Blot](#)
- [Immunohistochemistry](#)
- [Immunofluorescence](#)

- [Immunoprecipitation](#)
- [Flow Cytometry](#)
- [Cell Culture](#)

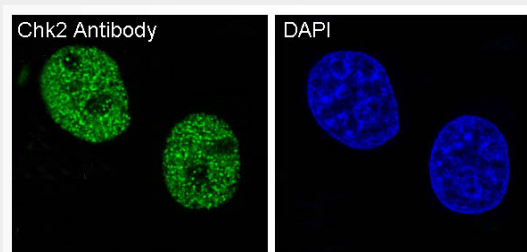
### Anti-Chk2 CHEK2 Rabbit Monoclonal Antibody - Images



Western blot analysis of Chk2 expression in (1) HeLa cell lysate; (2) 293T cell lysate.



Immunohistochemical analysis of paraffin-embedded human testis, using Chk2 Antibody.



Immunofluorescent analysis of HeLa cells, using Chk2 Antibody.