

Anti-MSI2/Musashi 2 Rabbit Monoclonal Antibody
Catalog # ABO13402

Specification

Anti-MSI2/Musashi 2 Rabbit Monoclonal Antibody - Product Information

Application	WB, IHC, IF, ICC, FC
Primary Accession	Q96DH6
Host	Rabbit
Isotype	Rabbit IgG
Reactivity	Rat, Human, Mouse
Clonality	Monoclonal
Format	Liquid

Description

Anti-MSI2/Musashi 2 Rabbit Monoclonal Antibody . Tested in WB, IHC, ICC/IF, Flow Cytometry applications. This antibody reacts with Human, Mouse, Rat.

Anti-MSI2/Musashi 2 Rabbit Monoclonal Antibody - Additional Information

Gene ID 124540

Other Names

RNA-binding protein Musashi homolog 2, Musashi-2, MSI2

Calculated MW

35197 MW KDa

Application Details

WB 1:500-1:2000
IHC 1:50-1:200
ICC/IF 1:50-1:200
FC 1:30

Subcellular Localization

Cytoplasm. Associated with polysomes..

Tissue Specificity

Ubiquitous; detected at low levels..

Contents

Rabbit IgG in phosphate buffered saline, pH 7.4, 150mM NaCl, 0.02% sodium azide and 50% glycerol, 0.4-0.5mg/ml BSA.

Immunogen

A synthesized peptide derived from human MSI2

Purification

Affinity-chromatography

Storage

Store at -20°C for one year. For short term storage and frequent use, store at 4°C for up to one month. Avoid repeated freeze-thaw cycles.

Anti-MSI2/Musashi 2 Rabbit Monoclonal Antibody - Protein Information

Name MSI2

Function

RNA binding protein that regulates the expression of target mRNAs at the translation level. May play a role in the proliferation and maintenance of stem cells in the central nervous system (By similarity).

Cellular Location

Cytoplasm. Note=Associated with polysomes.

Tissue Location

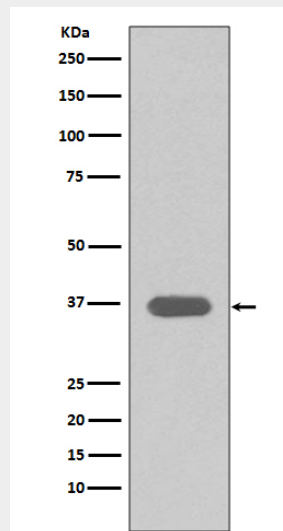
Ubiquitous; detected at low levels.

Anti-MSI2/Musashi 2 Rabbit Monoclonal Antibody - Protocols

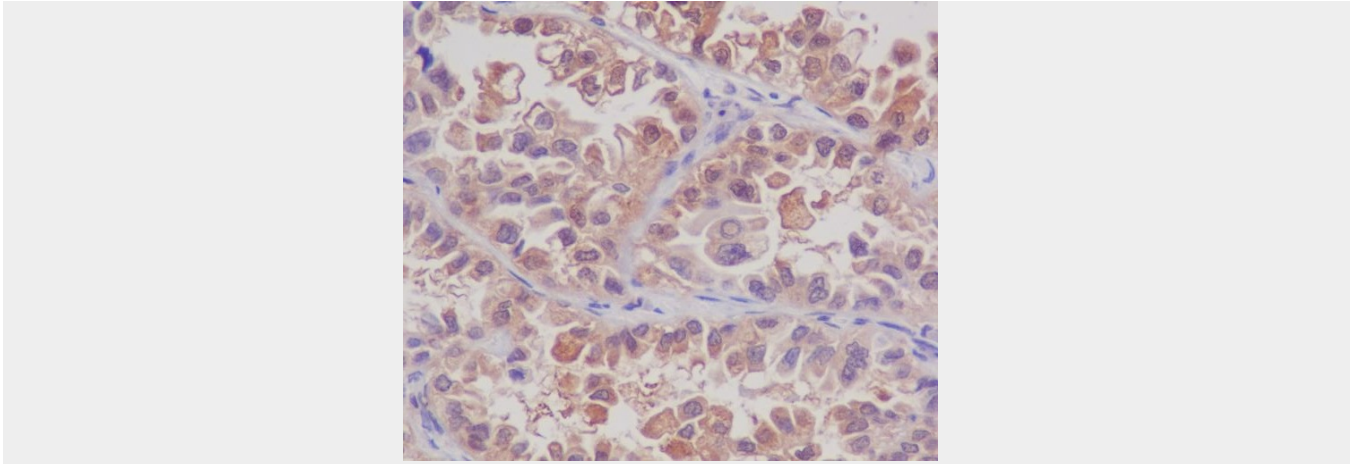
Provided below are standard protocols that you may find useful for product applications.

- [Western Blot](#)
- [Blocking Peptides](#)
- [Dot Blot](#)
- [Immunohistochemistry](#)
- [Immunofluorescence](#)
- [Immunoprecipitation](#)
- [Flow Cytometry](#)
- [Cell Culture](#)

Anti-MSI2/Musashi 2 Rabbit Monoclonal Antibody - Images



Western blot analysis of MSI2 expression in T47 D cell lysate.



Immunohistochemical analysis of paraffin-embedded human lung carcinoma, using MSI2 Antibody.