

Anti-MMP8 Rabbit Monoclonal Antibody Catalog # ABO13395

Specification

Anti-MMP8 Rabbit Monoclonal Antibody - Product Information

Application	WB, IHC, IF, ICC, IP, FC
Primary Accession	P22894
Host	Rabbit
Isotype	Rabbit IgG
Reactivity	Rat, Human, Mouse
Clonality	Monoclonal
Format	Liquid

Description

Anti-MMP8 Rabbit Monoclonal Antibody . Tested in WB, IHC, ICC/IF, IP, Flow Cytometry applications. This antibody reacts with Human, Mouse, Rat.

Anti-MMP8 Rabbit Monoclonal Antibody - Additional Information

Gene ID 4317

Other Names

Neutrophil collagenase, 3.4.24.34, Matrix metalloproteinase-8, MMP-8, PMNL collagenase, PMNL-CL, MMP8, CLG1

Calculated MW

53412 MW KDa

Application Details

WB 1:500-1:2000
IHC 1:50-1:200
ICC/IF 1:50-1:200
IP 1:50
FC 1:50

Subcellular Localization

Cytoplasmic granule. Secreted, extracellular space, extracellular matrix. Stored in intracellular granules.

Tissue Specificity

Neutrophils.

Contents

Rabbit IgG in phosphate buffered saline, pH 7.4, 150mM NaCl, 0.02% sodium azide and 50% glycerol, 0.4-0.5mg/ml BSA.

Immunogen

A synthesized peptide derived from human MMP8

Purification

Affinity-chromatography

Storage

Store at -20°C for one year. For short term storage and frequent use, store at 4°C for

up to one month. Avoid repeated
freeze-thaw cycles.

Anti-MMP8 Rabbit Monoclonal Antibody - Protein Information

Name MMP8

Synonyms CLG1

Function

Can degrade fibrillar type I, II, and III collagens.

Cellular Location

Cytoplasmic granule. Secreted, extracellular space, extracellular matrix. Note=Stored in intracellular granules

Tissue Location

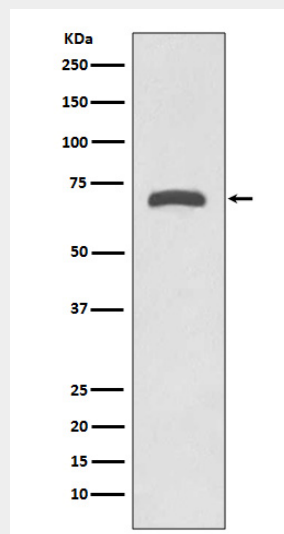
Neutrophils.

Anti-MMP8 Rabbit Monoclonal Antibody - Protocols

Provided below are standard protocols that you may find useful for product applications.

- [Western Blot](#)
- [Blocking Peptides](#)
- [Dot Blot](#)
- [Immunohistochemistry](#)
- [Immunofluorescence](#)
- [Immunoprecipitation](#)
- [Flow Cytometry](#)
- [Cell Culture](#)

Anti-MMP8 Rabbit Monoclonal Antibody - Images



Western blot analysis of MMP8 expression in Human placenta lysate.