

Anti-CCR3 Rabbit Monoclonal Antibody
Catalog # ABO13390

Specification

Anti-CCR3 Rabbit Monoclonal Antibody - Product Information

Application	WB, IHC, IF, ICC
Primary Accession	P51677
Host	Rabbit
Isotype	Rabbit IgG
Reactivity	Rat, Human, Mouse
Clonality	Monoclonal
Format	Liquid

Description

Anti-CCR3 Rabbit Monoclonal Antibody . Tested in WB, IHC, ICC/IF applications. This antibody reacts with Human, Mouse, Rat.

Anti-CCR3 Rabbit Monoclonal Antibody - Additional Information

Gene ID 1232

Other Names

C-C chemokine receptor type 3, C C CKR3, C-C CKR-3, CC-CKR-3, CCR-3, CCR3, CKR 3, CKR3, Eosinophil eotaxin receptor, CD193, CCR3, CMKBR3

Calculated MW

41044 MW KDa

Application Details

WB 1:500-1:2000
IHC 1:50-1:200
ICC/IF 1:50-1:200

Subcellular Localization

Cell membrane; Multi-pass membrane protein.

Tissue Specificity

In eosinophils as well as trace amounts in neutrophils and monocytes.

Contents

Rabbit IgG in phosphate buffered saline, pH 7.4, 150mM NaCl, 0.02% sodium azide and 50% glycerol, 0.4-0.5mg/ml BSA.

Immunogen

A synthesized peptide derived from human CCR3

Purification

Affinity-chromatography

Storage

Store at -20°C for one year. For short term storage and frequent use, store at 4°C for up to one month. Avoid repeated

freeze-thaw cycles.

Anti-CCR3 Rabbit Monoclonal Antibody - Protein Information

Name CCR3

Synonyms CMKBR3

Function

Receptor for C-C type chemokine. Binds and responds to a variety of chemokines, including CCL11, CCL26, CCL7, CCL13, RANTES(CCL5) and CCL15 (PubMed:7622448, PubMed:8642344, PubMed:8676064). Subsequently transduces a signal by increasing the intracellular calcium ions level (PubMed:8676064). In addition acts as a possible functional receptor for NARS1 (PubMed:30171954).

Cellular Location

Cell membrane; Multi-pass membrane protein

Tissue Location

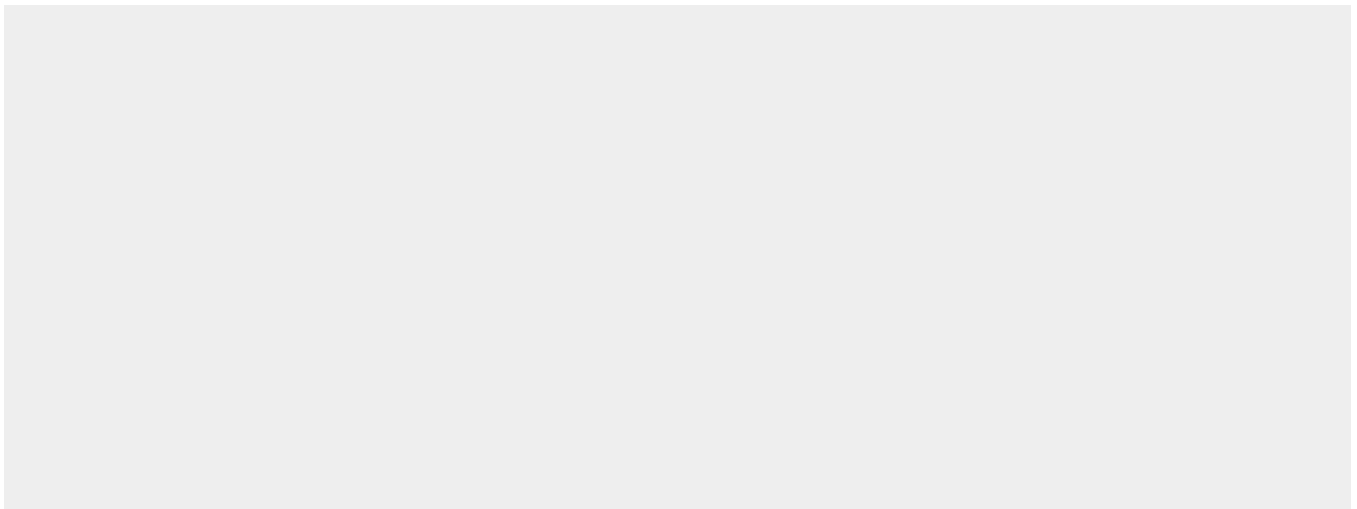
In eosinophils as well as trace amounts in neutrophils and monocytes.

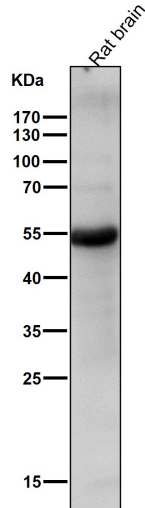
Anti-CCR3 Rabbit Monoclonal Antibody - Protocols

Provided below are standard protocols that you may find useful for product applications.

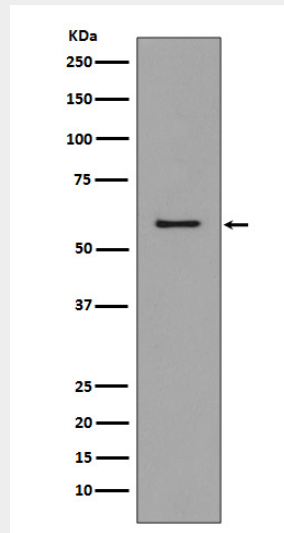
- [Western Blot](#)
- [Blocking Peptides](#)
- [Dot Blot](#)
- [Immunohistochemistry](#)
- [Immunofluorescence](#)
- [Immunoprecipitation](#)
- [Flow Cytometry](#)
- [Cell Culture](#)

Anti-CCR3 Rabbit Monoclonal Antibody - Images

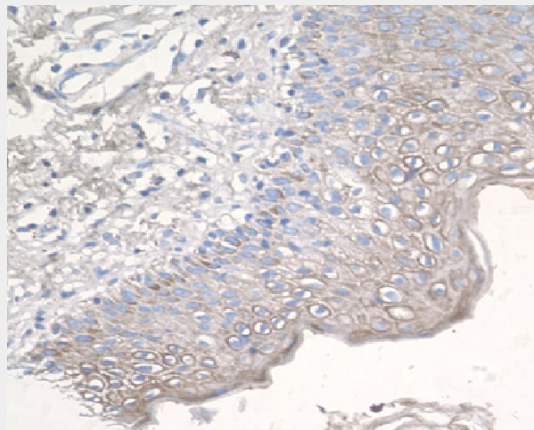




All lanes use the Antibody at 1:1K dilution for 1 hour at room temperature.



Western blot analysis of CCR3 expression in K562 cell lysate.



Immunohistochemical analysis of paraffin-embedded human epidermal cells of skin, using CCR3 Antibody.