

Anti-GRM5/Mglur5 Rabbit Monoclonal Antibody
Catalog # ABO13386**Specification****Anti-GRM5/Mglur5 Rabbit Monoclonal Antibody - Product Information**

Application	WB, IHC, IF, ICC, FC
Primary Accession	P41594
Host	Rabbit
Isotype	Rabbit IgG
Reactivity	Rat, Human, Mouse
Clonality	Monoclonal
Format	Liquid

Description

Anti-GRM5/Mglur5 Rabbit Monoclonal Antibody . Tested in WB, IHC, ICC/IF, Flow Cytometry applications. This antibody reacts with Human, Mouse, Rat.

Anti-GRM5/Mglur5 Rabbit Monoclonal Antibody - Additional Information

Gene ID 2915

Other Names

Metabotropic glutamate receptor 5, mGluR5, GRM5, GPRC1E, MGLUR5

Calculated MW

132469 MW KDa

Application Details

WB 1:500-1:2000
IHC 1:50-1:200
ICC/IF 1:50-1:200

Subcellular Localization

Cell membrane ; Multi-pass membrane protein.

Contents

Rabbit IgG in phosphate buffered saline, pH 7.4, 150mM NaCl, 0.02% sodium azide and 50% glycerol, 0.4-0.5mg/ml BSA.

Immunogen

A synthesized peptide derived from human GRM5

Purification

Affinity-chromatography

Storage

Store at -20°C for one year. For short term storage and frequent use, store at 4°C for up to one month. Avoid repeated freeze-thaw cycles.

Anti-GRM5/Mglur5 Rabbit Monoclonal Antibody - Protein Information

Name GRM5

Synonyms GPRC1E, MGLUR5

Function

G-protein coupled receptor for glutamate. Ligand binding causes a conformation change that triggers signaling via guanine nucleotide-binding proteins (G proteins) and modulates the activity of down-stream effectors. Signaling activates a phosphatidylinositol- calcium second messenger system and generates a calcium-activated chloride current. Plays an important role in the regulation of synaptic plasticity and the modulation of the neural network activity.

Cellular Location

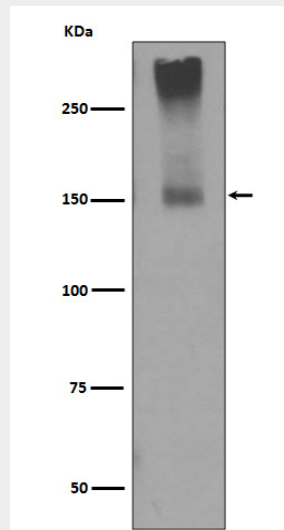
Cell membrane; Multi-pass membrane protein

Anti-GRM5/Mglur5 Rabbit Monoclonal Antibody - Protocols

Provided below are standard protocols that you may find useful for product applications.

- [Western Blot](#)
- [Blocking Peptides](#)
- [Dot Blot](#)
- [Immunohistochemistry](#)
- [Immunofluorescence](#)
- [Immunoprecipitation](#)
- [Flow Cytometry](#)
- [Cell Culture](#)

Anti-GRM5/Mglur5 Rabbit Monoclonal Antibody - Images



Western blot analysis of GRM5 expression in mouse brain lysate.