

**Anti-CD31 PECAM1 Rabbit Monoclonal Antibody**  
Catalog # ABO13368**Specification****Anti-CD31 PECAM1 Rabbit Monoclonal Antibody - Product Information**

Application	WB, IHC, FC
Primary Accession	<a href="#">P16284</a>
Host	Rabbit
Isotype	Rabbit IgG
Reactivity	Human
Clonality	Monoclonal
Format	Liquid

**Description**

Anti-CD31 PECAM1 Rabbit Monoclonal Antibody . Tested in WB, IHC, Flow Cytometry applications. This antibody reacts with Human.

**Anti-CD31 PECAM1 Rabbit Monoclonal Antibody - Additional Information**

**Gene ID** 5175

**Other Names**

Platelet endothelial cell adhesion molecule, PECAM-1, EndoCAM, GPIIA', PECA1, CD31, PECAM1

**Calculated MW**

82536 MW KDa

**Application Details**

WB 1:500-1:2000<br>IHC 1:50-1:200<br>FC 1:50

**Subcellular Localization**

Isoform Long: Cell membrane; Single-pass type I membrane protein. Cell membrane; Lipid-anchor. Cell junction. Localizes to the lateral border recycling compartment (LBRC) and recycles from the LBRC to the junction in resting endothelial cells.

**Tissue Specificity**

Expressed on platelets and leukocytes and is primarily concentrated at the borders between endothelial cells. Isoform Long predominates in all tissues examined. Isoform Delta12 is detected only in trachea. Isoform Delta14-15 is only detected in lung. Isoform Delta14 is detected in all tissues examined with the strongest expression in heart. Isoform Delta15 is expressed in brain, testis, ovary, cell surface of platelets, human umbilical vein endothelial cells (HUVECs), Jurkat T-cell leukemia, human erythroleukemia (HEL) and U-937 histiocytic lymphoma cell lines (at protein level)..

**Contents**

Rabbit IgG in phosphate buffered saline, pH 7.4, 150mM NaCl, 0.02% sodium azide and 50% glycerol, 0.4-0.5mg/ml BSA.

**Immunogen**

A synthesized peptide derived from human CD31

## Purification

Affinity-chromatography

## Storage

**Store at -20°C for one year. For short term storage and frequent use, store at 4°C for up to one month. Avoid repeated freeze-thaw cycles.**

## Anti-CD31 PECAM1 Rabbit Monoclonal Antibody - Protein Information

### Name PECAM1

### Function

Cell adhesion molecule which is required for leukocyte transendothelial migration (TEM) under most inflammatory conditions (PubMed:<a href="http://www.uniprot.org/citations/17580308" target="\_blank">17580308</a>, PubMed:<a href="http://www.uniprot.org/citations/19342684" target="\_blank">19342684</a>). Tyr-690 plays a critical role in TEM and is required for efficient trafficking of PECAM1 to and from the lateral border recycling compartment (LBRC) and is also essential for the LBRC membrane to be targeted around migrating leukocytes (PubMed:<a href="http://www.uniprot.org/citations/19342684" target="\_blank">19342684</a>). Trans-homophilic interaction may play a role in endothelial cell-cell adhesion via cell junctions (PubMed:<a href="http://www.uniprot.org/citations/27958302" target="\_blank">27958302</a>). Heterophilic interaction with CD177 plays a role in transendothelial migration of neutrophils (PubMed:<a href="http://www.uniprot.org/citations/17580308" target="\_blank">17580308</a>). Homophilic ligation of PECAM1 prevents macrophage-mediated phagocytosis of neighboring viable leukocytes by transmitting a detachment signal (PubMed:<a href="http://www.uniprot.org/citations/12110892" target="\_blank">12110892</a>). Promotes macrophage-mediated phagocytosis of apoptotic leukocytes by tethering them to the phagocytic cells; PECAM1-mediated detachment signal appears to be disabled in apoptotic leukocytes (PubMed:<a href="http://www.uniprot.org/citations/12110892" target="\_blank">12110892</a>). Modulates bradykinin receptor BDKRB2 activation (PubMed:<a href="http://www.uniprot.org/citations/18672896" target="\_blank">18672896</a>). Regulates bradykinin- and hyperosmotic shock-induced ERK1/2 activation in endothelial cells (PubMed:<a href="http://www.uniprot.org/citations/18672896" target="\_blank">18672896</a>). Induces susceptibility to atherosclerosis (By similarity).

### Cellular Location

Cell membrane; Single-pass type I membrane protein. Note=Cell surface expression on neutrophils is down-regulated upon fMLP or CXCL8/IL8- mediated stimulation. [Isoform Delta15]: Cell junction. Note=Localizes to the lateral border recycling compartment (LBRC) and recycles from the LBRC to the junction in resting endothelial cells

### Tissue Location

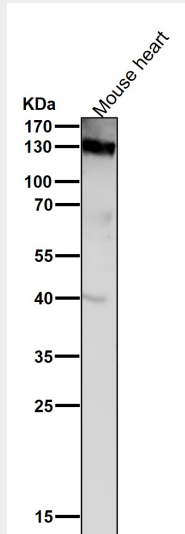
Expressed on platelets and leukocytes and is primarily concentrated at the borders between endothelial cells (PubMed:18388311, PubMed:21464369). Expressed in human umbilical vein endothelial cells (HUVECs) (at protein level) (PubMed:17580308, PubMed:19342684). Expressed on neutrophils (at protein level) (PubMed:17580308). Isoform Long predominates in all tissues examined (PubMed:12433657). Isoform Delta12 is detected only in trachea (PubMed:12433657). Isoform Delta14-15 is only detected in lung (PubMed:12433657). Isoform Delta14 is detected in all tissues examined with the strongest expression in heart (PubMed:12433657). Isoform Delta15 is expressed in brain, testis, ovary, cell surface of platelets, human umbilical vein endothelial cells (HUVECs), Jurkat T- cell leukemia, human erythroleukemia (HEL) and U-937 histiocytic lymphoma cell lines (at protein level) (PubMed:12433657, PubMed:18388311).

## Anti-CD31 PECAM1 Rabbit Monoclonal Antibody - Protocols

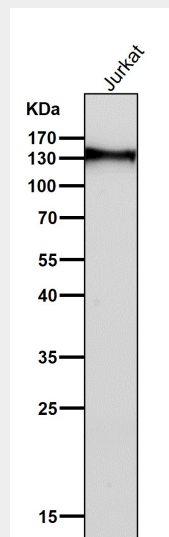
Provided below are standard protocols that you may find useful for product applications.

- [Western Blot](#)
- [Blocking Peptides](#)
- [Dot Blot](#)
- [Immunohistochemistry](#)
- [Immunofluorescence](#)
- [Immunoprecipitation](#)
- [Flow Cytometry](#)
- [Cell Culture](#)

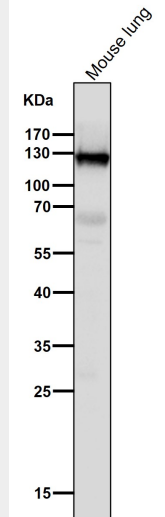
### Anti-CD31 PECAM1 Rabbit Monoclonal Antibody - Images



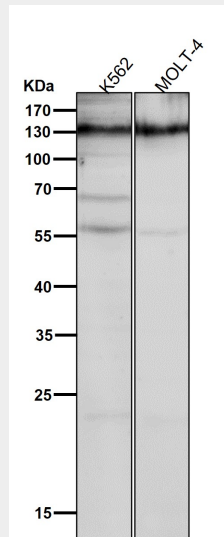
All lanes use the Antibody at 1:5K dilution for 1 hour at room temperature.



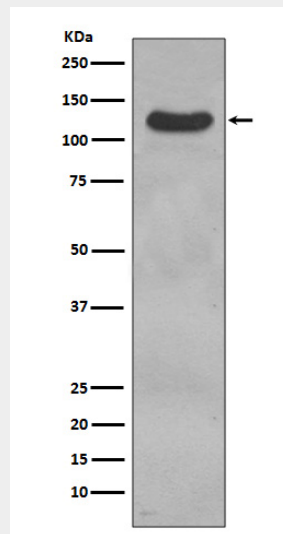
All lanes use the Antibody at 1:5K dilution for 1 hour at room temperature.



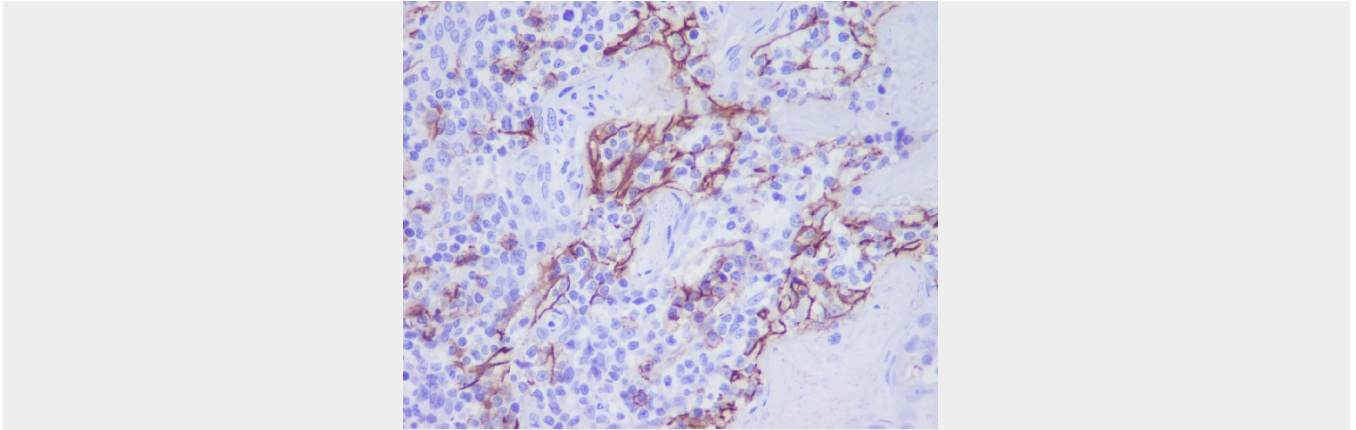
All lanes use the Antibody at 1:5K dilution for 1 hour at room temperature.



All lanes use the Antibody at 1:5K dilution for 1 hour at room temperature.



Western blot analysis of CD31 expression in THP1 cell lysate.



Immunohistochemical analysis of paraffin-embedded human tonsil, using CD31 Antibody.