

Anti-ELK1 Rabbit Monoclonal Antibody
Catalog # ABO13364**Specification****Anti-ELK1 Rabbit Monoclonal Antibody - Product Information**

Application	WB, IHC, IF, ICC, IP
Primary Accession	P19419
Host	Rabbit
Isotype	Rabbit IgG
Reactivity	Rat, Human, Mouse
Clonality	Monoclonal
Format	Liquid

Description

Anti-ELK1 Rabbit Monoclonal Antibody . Tested in WB, IHC, ICC/IF, IP applications. This antibody reacts with Human, Mouse, Rat.

Anti-ELK1 Rabbit Monoclonal Antibody - Additional Information

Gene ID 2002

Other Names

ETS domain-containing protein Elk-1, ELK1 ([HGNC:3321](http://www.genenames.org/cgi-bin/gene_symbol_report?hgnc_id=3321))

Calculated MW

44888 MW KDa

Application Details

WB 1:500-1:1000
IHC 1:50-1:200
ICC/IF 1:50-1:200
IP 1:30

Subcellular Localization

Nucleus.

Tissue Specificity

Lung and testis.

Contents

Rabbit IgG in phosphate buffered saline, pH 7.4, 150mM NaCl, 0.02% sodium azide and 50% glycerol, 0.4-0.5mg/ml BSA.

Immunogen

A synthesized peptide derived from human ELK1

Purification

Affinity-chromatography

Storage

Store at -20°C for one year. For short term storage and frequent use, store at 4°C for

up to one month. Avoid repeated
freeze-thaw cycles.

Anti-ELK1 Rabbit Monoclonal Antibody - Protein Information

Name ELK1 ([HGNC:3321](#))

Function

Transcription factor that binds to purine-rich DNA sequences (PubMed:10799319, PubMed:7889942). Forms a ternary complex with SRF and the ETS and SRF motifs of the serum response element (SRE) on the promoter region of immediate early genes such as FOS and IER2 (PubMed:1630903). Induces target gene transcription upon JNK and MAPK- signaling pathways stimulation (PubMed:7889942).

Cellular Location

Nucleus.

Tissue Location

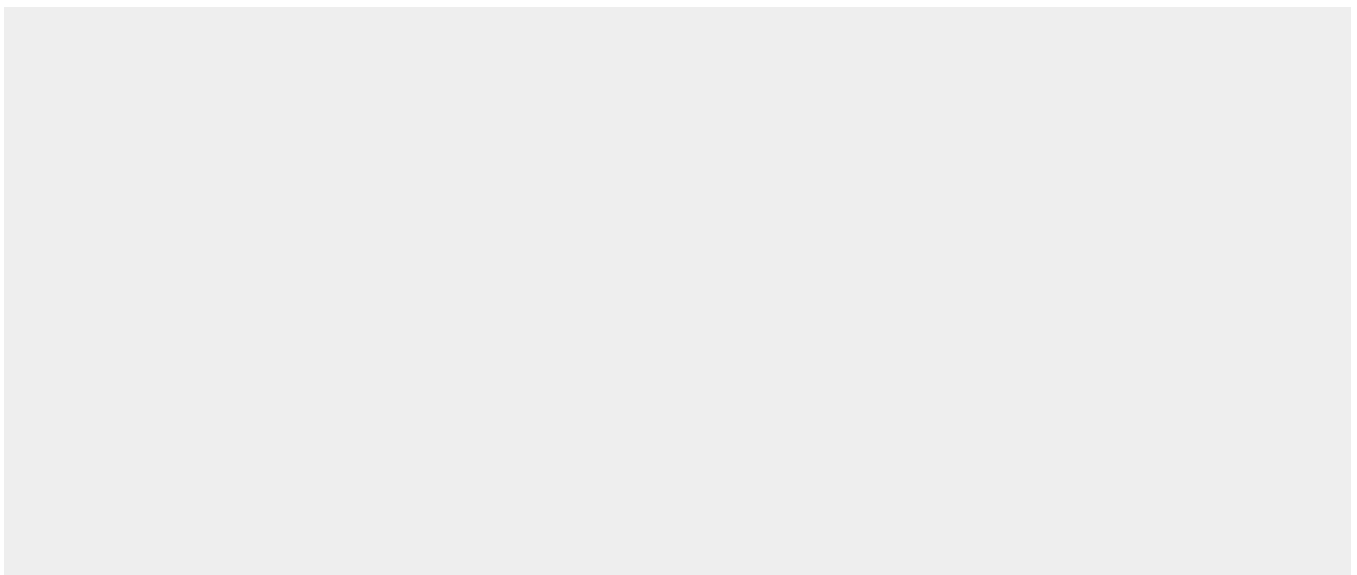
Lung and testis.

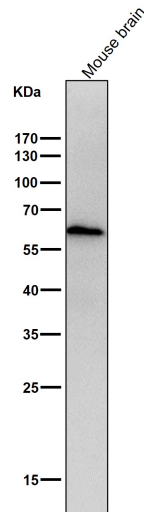
Anti-ELK1 Rabbit Monoclonal Antibody - Protocols

Provided below are standard protocols that you may find useful for product applications.

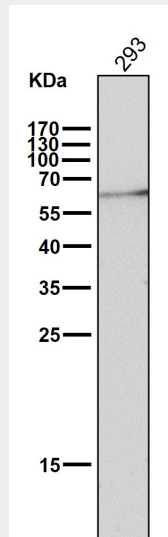
- [Western Blot](#)
- [Blocking Peptides](#)
- [Dot Blot](#)
- [Immunohistochemistry](#)
- [Immunofluorescence](#)
- [Immunoprecipitation](#)
- [Flow Cytometry](#)
- [Cell Culture](#)

Anti-ELK1 Rabbit Monoclonal Antibody - Images

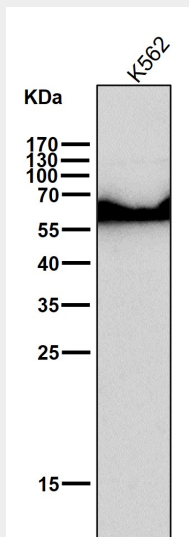




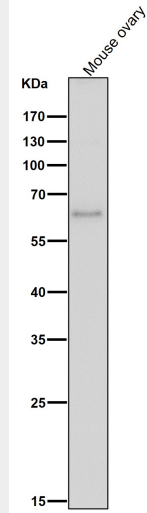
All lanes use the Antibody at 1:1K dilution for 1 hour at room temperature.



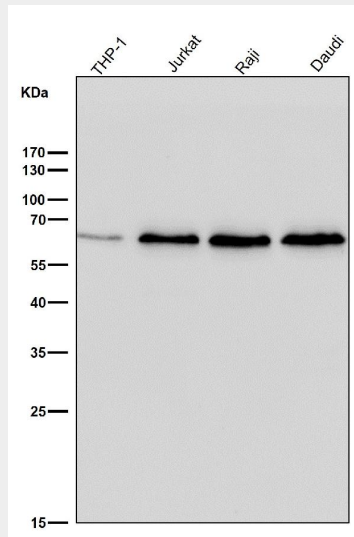
All lanes use the Antibody at 1:1K dilution for 1 hour at room temperature.



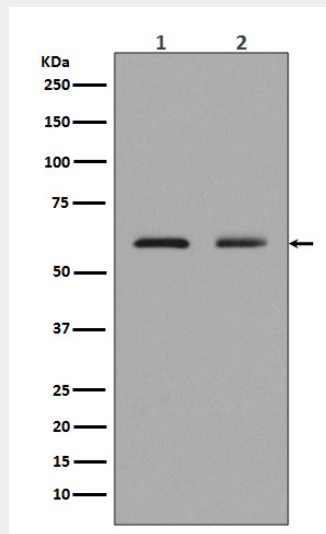
All lanes use the Antibody at 1:1K dilution for 1 hour at room temperature.



All lanes use the Antibody at 1:1K dilution for 1 hour at room temperature.



All lanes use the Antibody at 1:1K dilution for 1 hour at room temperature.



Western blot analysis of Elk1 expression in (1)Neuro-2a cell lysates; (2)K562 cell lysate.