

**Anti-MCSF Rabbit Monoclonal Antibody**  
Catalog # ABO13363**Specification****Anti-MCSF Rabbit Monoclonal Antibody - Product Information**

Application	WB, IHC, IF, ICC, IP
Primary Accession	<a href="#">P09603</a>
Host	Rabbit
Isotype	Rabbit IgG
Reactivity	Human
Clonality	Monoclonal
Format	Liquid

**Description**

Anti-MCSF Rabbit Monoclonal Antibody . Tested in WB, IHC, ICC/IF, IP applications. This antibody reacts with Human.

**Anti-MCSF Rabbit Monoclonal Antibody - Additional Information**

**Gene ID** 1435

**Other Names**

Macrophage colony-stimulating factor 1, CSF-1, M-CSF, MCSF, Lanimostim, Proteoglycan macrophage colony-stimulating factor, PG-M-CSF, Processed macrophage colony-stimulating factor 1, Macrophage colony-stimulating factor 1 43 kDa subunit, CSF1

**Calculated MW**

60179 MW KDa

**Application Details**

WB 1:1000-1:1000<br>IHC 1:50-1:200<br>ICC/IF 1:50-1:100<br>IP 1:50

**Subcellular Localization**

Cell membrane ; Single-pass type I membrane protein.

**Contents**

Rabbit IgG in phosphate buffered saline, pH 7.4, 150mM NaCl, 0.02% sodium azide and 50% glycerol, 0.4-0.5mg/ml BSA.

**Immunogen**

A synthesized peptide derived from human MCSF

**Purification**

Affinity-chromatography

**Storage**

**Store at -20°C for one year. For short term storage and frequent use, store at 4°C for up to one month. Avoid repeated freeze-thaw cycles.**

## Anti-MCSF Rabbit Monoclonal Antibody - Protein Information

**Name** CSF1

### Function

Cytokine that plays an essential role in the regulation of survival, proliferation and differentiation of hematopoietic precursor cells, especially mononuclear phagocytes, such as macrophages and monocytes. Promotes the release of pro-inflammatory chemokines, and thereby plays an important role in innate immunity and in inflammatory processes. Plays an important role in the regulation of osteoclast proliferation and differentiation, the regulation of bone resorption, and is required for normal bone development. Required for normal male and female fertility. Promotes reorganization of the actin cytoskeleton, regulates formation of membrane ruffles, cell adhesion and cell migration. Plays a role in lipoprotein clearance.

### Cellular Location

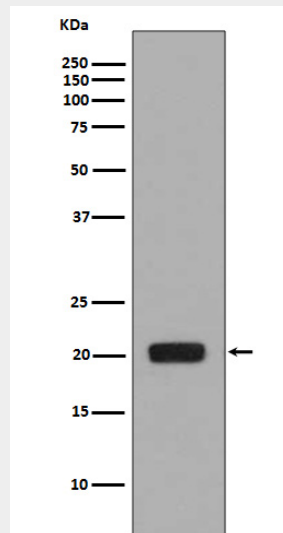
Cell membrane; Single-pass type I membrane protein

## Anti-MCSF Rabbit Monoclonal Antibody - Protocols

Provided below are standard protocols that you may find useful for product applications.

- [Western Blot](#)
- [Blocking Peptides](#)
- [Dot Blot](#)
- [Immunohistochemistry](#)
- [Immunofluorescence](#)
- [Immunoprecipitation](#)
- [Flow Cytometry](#)
- [Cell Culture](#)

## Anti-MCSF Rabbit Monoclonal Antibody - Images



Western blot analysis of MCSF expression in MCSF recombinant protein.