

**Anti-SHP1 PTPN6 Rabbit Monoclonal Antibody**  
Catalog # ABO13362

**Specification**

---

**Anti-SHP1 PTPN6 Rabbit Monoclonal Antibody - Product Information**

Application	WB, IHC
Primary Accession	<a href="#">P29350</a>
Host	Rabbit
Isotype	Rabbit IgG
Reactivity	Rat, Human, Mouse
Clonality	Monoclonal
Format	Liquid

**Description**

Anti-SHP1 PTPN6 Rabbit Monoclonal Antibody . Tested in WB, IHC applications. This antibody reacts with Human, Mouse, Rat.

**Anti-SHP1 PTPN6 Rabbit Monoclonal Antibody - Additional Information**

**Gene ID** 5777

**Other Names**

Tyrosine-protein phosphatase non-receptor type 6, 3.1.3.48, Hematopoietic cell protein-tyrosine phosphatase, Protein-tyrosine phosphatase 1C, PTP-1C, Protein-tyrosine phosphatase SHP-1, SH-PTP1, PTPN6, HCP, PTP1C

**Calculated MW**

67561 MW KDa

**Application Details**

WB 1:500-1:2000<br>IHC 1:50-1:200

**Subcellular Localization**

Cytoplasm. Nucleus. In neurons, translocates into the nucleus after treatment with angiotensin II (By similarity). Shuttles between the cytoplasm and nucleus via its association with PDPK1..

**Tissue Specificity**

Isoform 1 is expressed in hematopoietic cells. Isoform 2 is expressed in non-hematopoietic cells.

**Contents**

Rabbit IgG in phosphate buffered saline, pH 7.4, 150mM NaCl, 0.02% sodium azide and 50% glycerol, 0.4-0.5mg/ml BSA.

**Immunogen**

A synthesized peptide derived from human SHP1

**Purification**

Affinity-chromatography

Storage

**Store at -20°C for one year. For short term**

storage and frequent use, store at 4°C for up to one month. Avoid repeated freeze-thaw cycles.

## Anti-SHP1 PTPN6 Rabbit Monoclonal Antibody - Protein Information

**Name** PTPN6

**Synonyms** HCP, PTP1C

### Function

Modulates signaling by tyrosine phosphorylated cell surface receptors such as KIT and the EGF receptor/EGFR. The SH2 regions may interact with other cellular components to modulate its own phosphatase activity against interacting substrates. Together with MTUS1, induces UBE2V2 expression upon angiotensin II stimulation. Plays a key role in hematopoiesis.

### Cellular Location

Cytoplasm. Nucleus. Note=In neurons, translocates into the nucleus after treatment with angiotensin II (By similarity) Shuttles between the cytoplasm and nucleus via its association with PDPK1.

### Tissue Location

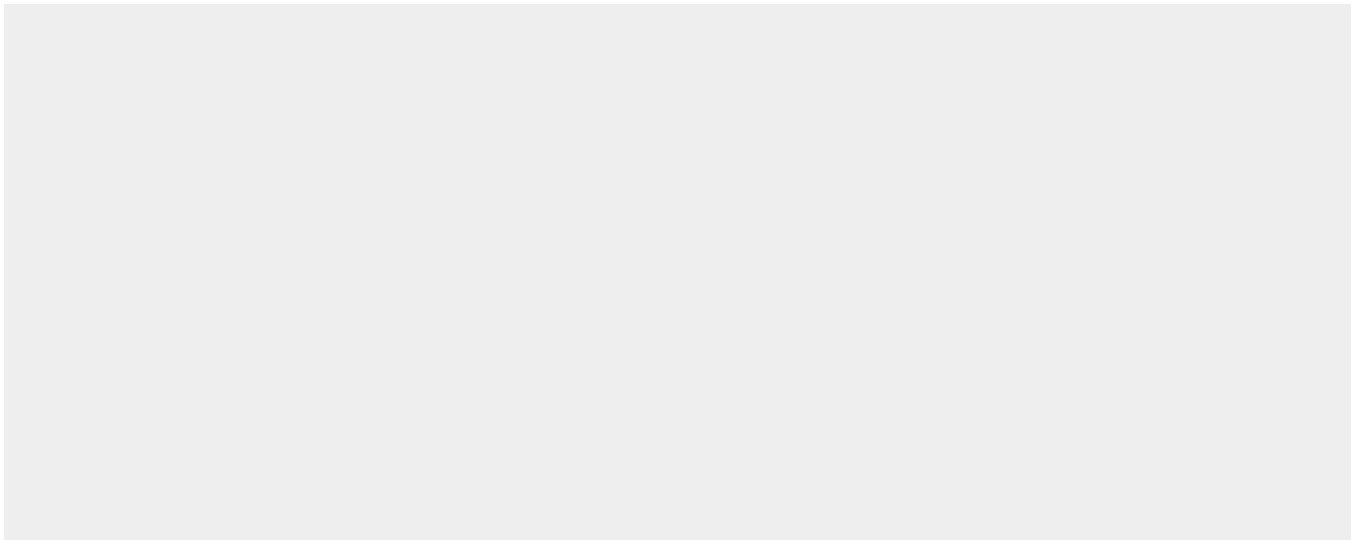
Isoform 1 is expressed in hematopoietic cells. Isoform 2 is expressed in non-hematopoietic cells

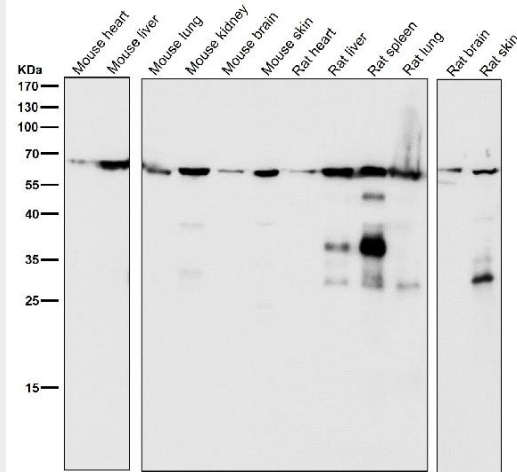
## Anti-SHP1 PTPN6 Rabbit Monoclonal Antibody - Protocols

Provided below are standard protocols that you may find useful for product applications.

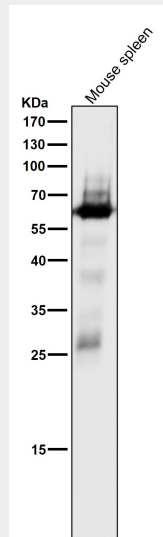
- [Western Blot](#)
- [Blocking Peptides](#)
- [Dot Blot](#)
- [Immunohistochemistry](#)
- [Immunofluorescence](#)
- [Immunoprecipitation](#)
- [Flow Cytometry](#)
- [Cell Culture](#)

## Anti-SHP1 PTPN6 Rabbit Monoclonal Antibody - Images

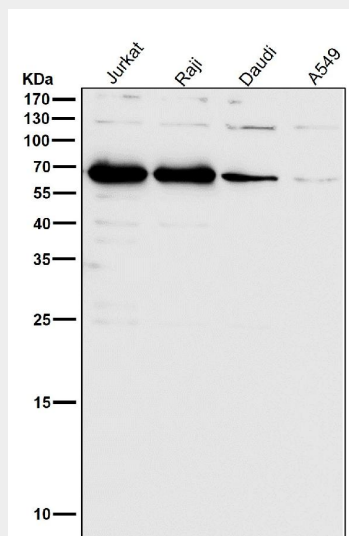




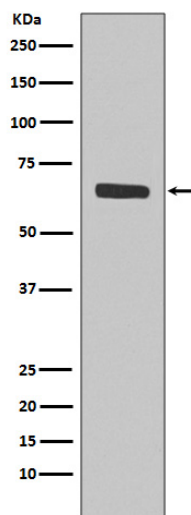
All lanes use the Antibody at 1:1K dilution for 1 hour at room temperature.



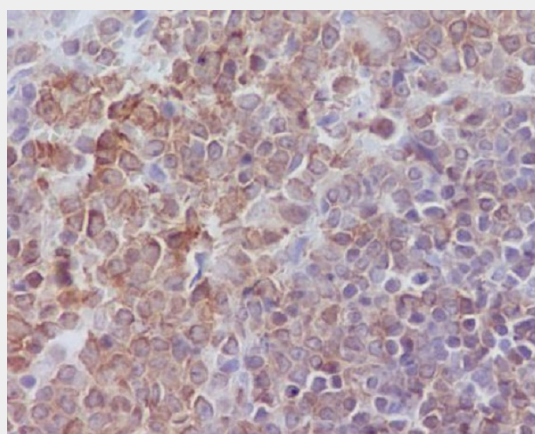
All lanes use the Antibody at 1:1K dilution for 1 hour at room temperature.



All lanes use the Antibody at 1:1K dilution for 1 hour at room temperature.



Western blot analysis of SHP1 expression in Jurkat cell lysate.



Immunohistochemical analysis of paraffin-embedded rat spleen, using SHP1 Antibody.