

**Anti-MMP1 Rabbit Monoclonal Antibody**  
Catalog # ABO13354**Specification****Anti-MMP1 Rabbit Monoclonal Antibody - Product Information**

Application	WB, IHC, IF, ICC, FC
Primary Accession	<a href="#">P03956</a>
Host	Rabbit
Isotype	Rabbit IgG
Reactivity	Human
Clonality	Monoclonal
Format	Liquid

**Description**

Anti-MMP1 Rabbit Monoclonal Antibody . Tested in WB, IHC, ICC/IF, Flow Cytometry applications. This antibody reacts with Human.

**Anti-MMP1 Rabbit Monoclonal Antibody - Additional Information**

**Gene ID** 4312

**Other Names**

Interstitial collagenase, 3.4.24.7, Fibroblast collagenase, Matrix metalloproteinase-1, MMP-1, 22 kDa interstitial collagenase, 27 kDa interstitial collagenase, MMP1, CLG

**Calculated MW**

54007 MW KDa

**Application Details**

WB 1:500-1:2000<br>IHC 1:50-1:200<br>ICC/IF 1:50-1:200<br>FC 1:50

**Subcellular Localization**

Secreted, extracellular space, extracellular matrix.

**Contents**

Rabbit IgG in phosphate buffered saline, pH 7.4, 150mM NaCl, 0.02% sodium azide and 50% glycerol, 0.4-0.5mg/ml BSA.

**Immunogen**

A synthesized peptide derived from human MMP1

**Purification**

Affinity-chromatography

**Storage**

**Store at -20°C for one year. For short term storage and frequent use, store at 4°C for up to one month. Avoid repeated freeze-thaw cycles.**

**Anti-MMP1 Rabbit Monoclonal Antibody - Protein Information**

**Name** MMP1

**Synonyms** CLG

**Function**

Cleaves collagens of types I, II, and III at one site in the helical domain. Also cleaves collagens of types VII and X (PubMed:<a href="http://www.uniprot.org/citations/1645757" target="\_blank">1645757</a>, PubMed:<a href="http://www.uniprot.org/citations/2153297" target="\_blank">2153297</a>, PubMed:<a href="http://www.uniprot.org/citations/2557822" target="\_blank">2557822</a>). In case of HIV infection, interacts and cleaves the secreted viral Tat protein, leading to a decrease in neuronal Tat's mediated neurotoxicity (PubMed:<a href="http://www.uniprot.org/citations/16807369" target="\_blank">16807369</a>).

**Cellular Location**

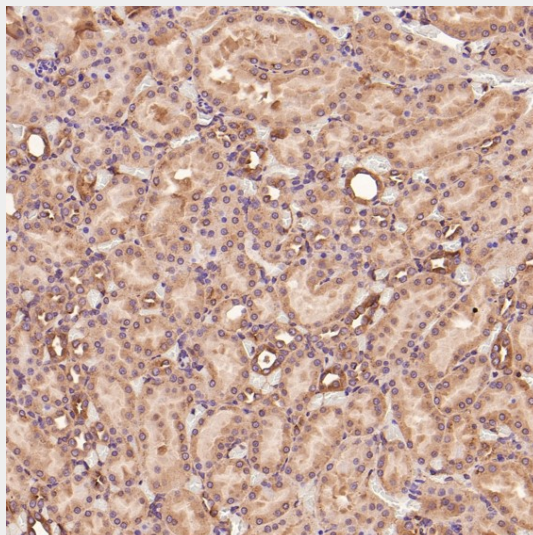
Secreted, extracellular space, extracellular matrix

**Anti-MMP1 Rabbit Monoclonal Antibody - Protocols**

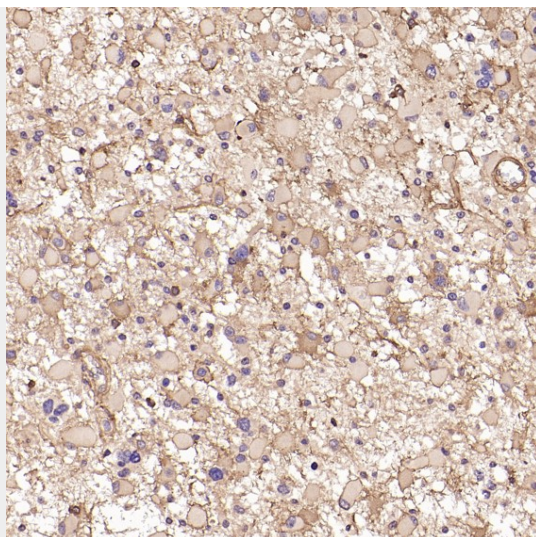
Provided below are standard protocols that you may find useful for product applications.

- [Western Blot](#)
- [Blocking Peptides](#)
- [Dot Blot](#)
- [Immunohistochemistry](#)
- [Immunofluorescence](#)
- [Immunoprecipitation](#)
- [Flow Cytometry](#)
- [Cell Culture](#)

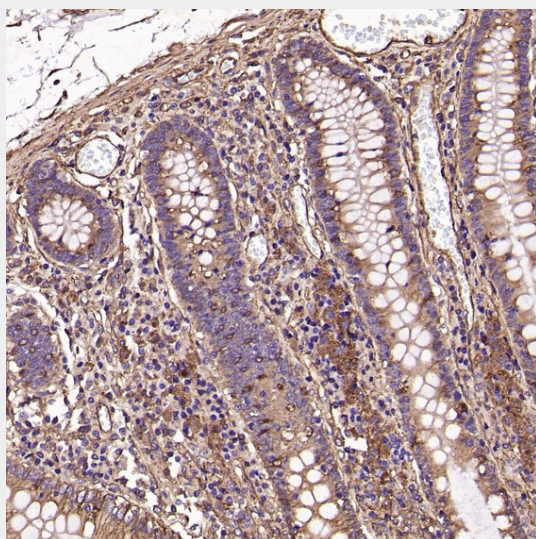
**Anti-MMP1 Rabbit Monoclonal Antibody - Images**



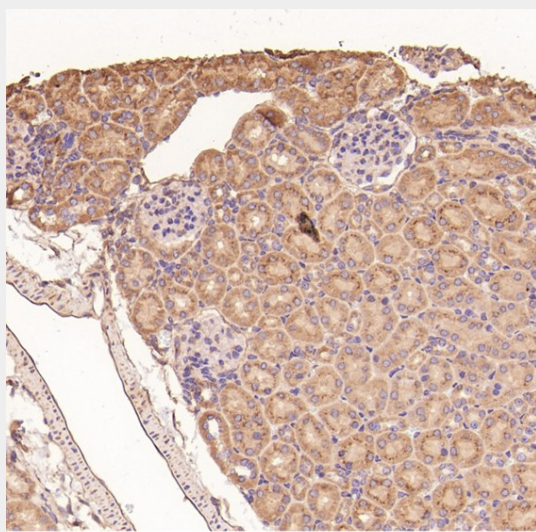
Immunohistochemical analysis of paraffin-embedded Rat kidney, using the Antibody at 1:50 dilution.



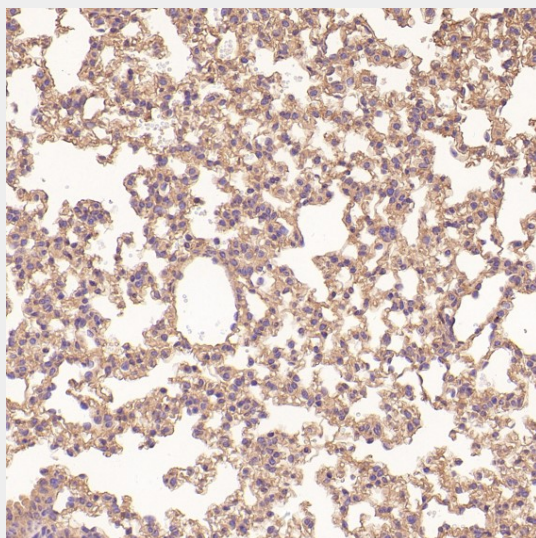
Immunohistochemical analysis of paraffin-embedded Human astrocytoma, using the Antibody at 1:50 dilution.



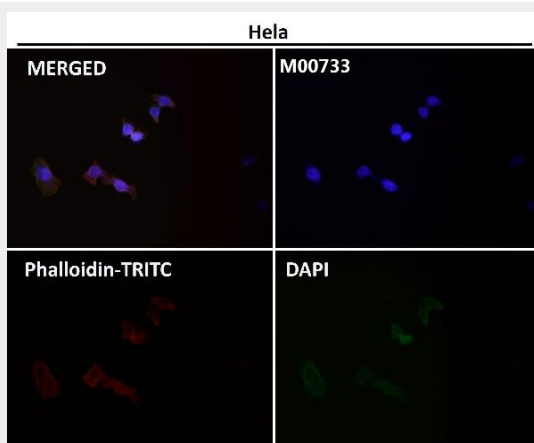
Immunohistochemical analysis of paraffin-embedded Human colon, using the Antibody at 1:50 dilution.



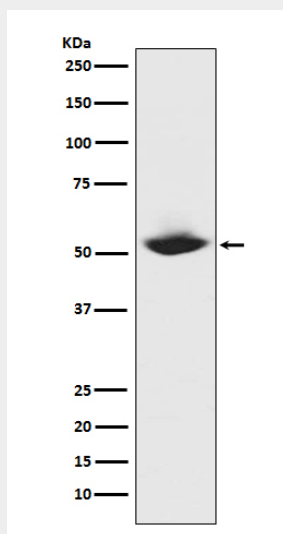
Immunohistochemical analysis of paraffin-embedded Mouse kidney, using the Antibody at 1:50 dilution.



Immunohistochemical analysis of paraffin-embedded Mouse lung, using the Antibody at 1:50 dilution.

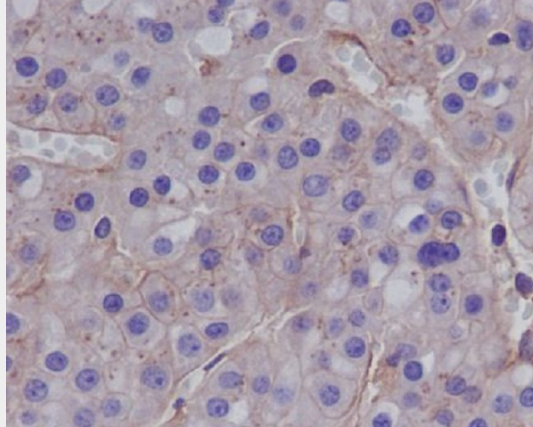


Immunofluorescent analysis using the Antibody at 1:50 dilution.



Western blot analysis of MMP1 expression in MMP1 recombinant protein.





Immunohistochemical analysis of paraffin-embedded human hepatocellular carcinoma, using MMP1 Antibody.