

Anti-Rab4 RAB4A Rabbit Monoclonal Antibody
Catalog # ABO13352**Specification****Anti-Rab4 RAB4A Rabbit Monoclonal Antibody - Product Information**

Application	WB, IF, ICC, FC
Primary Accession	P20338
Host	Rabbit
Isotype	Rabbit IgG
Reactivity	Rat, Human, Mouse
Clonality	Monoclonal
Format	Liquid

Description

Anti-Rab4 RAB4A Rabbit Monoclonal Antibody . Tested in WB, ICC/IF, Flow Cytometry applications. This antibody reacts with Human, Mouse, Rat.

Anti-Rab4 RAB4A Rabbit Monoclonal Antibody - Additional Information

Gene ID 5867

Other Names

Ras-related protein Rab-4A, 3.6.5.2, RAB4A, RAB4

Calculated MW

24390 MW KDa

Application Details

WB 1:500-1:2000
ICC/IF 1:50-1:200
FC 1:50

Subcellular Localization

Membrane; Peripheral membrane protein. Cytoplasm. Generally associated with membranes. Cytoplasmic when phosphorylated by CDK1.

Contents

Rabbit IgG in phosphate buffered saline, pH 7.4, 150mM NaCl, 0.02% sodium azide and 50% glycerol, 0.4-0.5mg/ml BSA.

Immunogen

A synthesized peptide derived from human Rab4

Purification

Affinity-chromatography

Storage

Store at -20°C for one year. For short term storage and frequent use, store at 4°C for up to one month. Avoid repeated freeze-thaw cycles.

Anti-Rab4 RAB4A Rabbit Monoclonal Antibody - Protein Information

Name RAB4A

Synonyms RAB4

Function

Small GTPase which cycles between an active GTP-bound and an inactive GDP-bound state (PubMed:15907487, PubMed:16034420). Involved in protein transport (PubMed:29425100). Plays a role in vesicular traffic. Mediates VEGFR2 endosomal trafficking to enhance VEGFR2 signaling (PubMed:29425100). Acts as a regulator of platelet alpha- granule release during activation and aggregation of platelets (By similarity).

Cellular Location

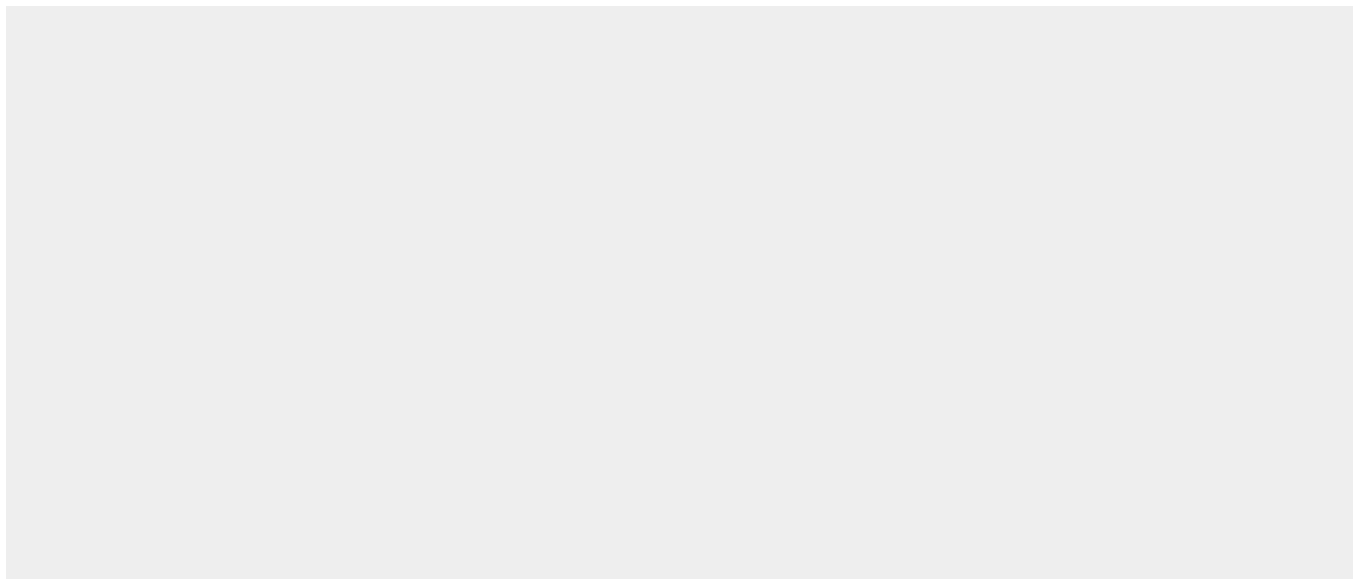
Membrane; Peripheral membrane protein. Cytoplasm Early endosome membrane {ECO:0000250|UniProtKB:P05714}; Peripheral membrane protein {ECO:0000250|UniProtKB:P05714}. Recycling endosome membrane {ECO:0000250|UniProtKB:P05714}; Peripheral membrane protein {ECO:0000250|UniProtKB:P05714}. Note=Generally associated with membranes. Cytoplasmic when phosphorylated by CDK1

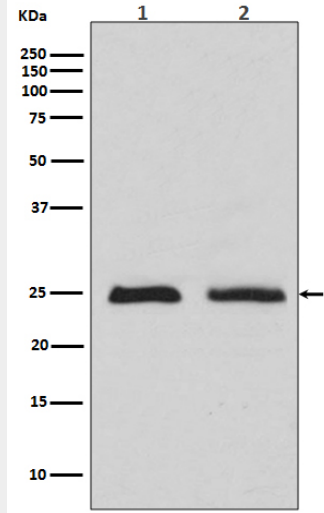
Anti-Rab4 RAB4A Rabbit Monoclonal Antibody - Protocols

Provided below are standard protocols that you may find useful for product applications.

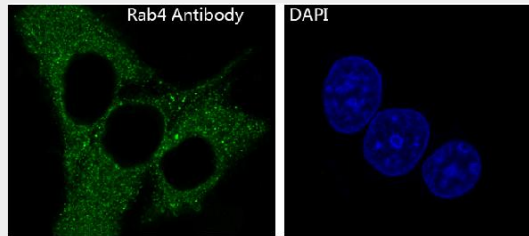
- [Western Blot](#)
- [Blocking Peptides](#)
- [Dot Blot](#)
- [Immunohistochemistry](#)
- [Immunofluorescence](#)
- [Immunoprecipitation](#)
- [Flow Cytometry](#)
- [Cell Culture](#)

Anti-Rab4 RAB4A Rabbit Monoclonal Antibody - Images

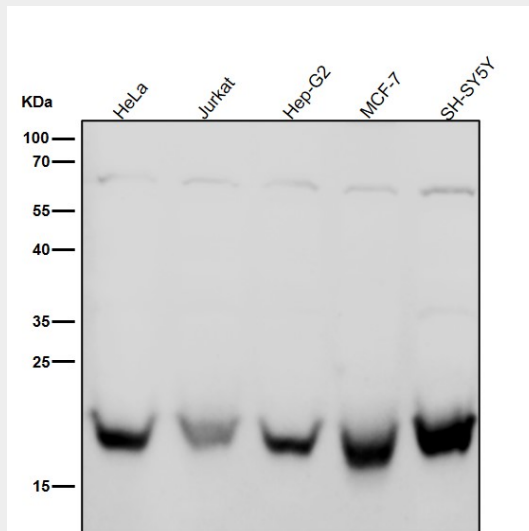




Western blot analysis of Rab4 expression in (1) MCF7 cell lysates (2) HeLa cell lysate.



Immunofluorescent analysis of HeLa cells, using Rab4 Antibody.



All lanes use the Antibody at 1:2K dilution for 1 hour at room temperature.