

**Anti-CETP Rabbit Monoclonal Antibody**  
Catalog # ABO13348

**Specification**

**Anti-CETP Rabbit Monoclonal Antibody - Product Information**

Application	WB, IP
Primary Accession	<a href="#">P11597</a>
Host	Rabbit
Isotype	Rabbit IgG
Reactivity	Human
Clonality	Monoclonal
Format	Liquid

**Description**

Anti-CETP Rabbit Monoclonal Antibody . Tested in WB, IP applications. This antibody reacts with Human.

**Anti-CETP Rabbit Monoclonal Antibody - Additional Information**

**Gene ID** 1071

**Other Names**

Cholesteryl ester transfer protein, Lipid transfer protein I {ECO:0000312|MIM:118470}, CETP ([HGNC:1869](http://www.genenames.org/cgi-bin/gene_symbol_report?hgnc_id=1869))

**Calculated MW**

54756 MW KDa

**Application Details**

WB 1:500-1:2000<br>IP 1:50

**Subcellular Localization**

Secreted, extracellular space. Secreted in plasma..

**Tissue Specificity**

Expressed by the liver and secreted in plasma.

**Contents**

Rabbit IgG in phosphate buffered saline, pH 7.4, 150mM NaCl, 0.02% sodium azide and 50% glycerol, 0.4-0.5mg/ml BSA.

**Immunogen**

A synthesized peptide derived from human CETP

**Purification**

Affinity-chromatography

**Storage**

**Store at -20°C for one year. For short term storage and frequent use, store at 4°C for**

up to one month. Avoid repeated  
freeze-thaw cycles.

## Anti-CETP Rabbit Monoclonal Antibody - Protein Information

Name CETP ([HGNC:1869](#))

### Function

Involved in the transfer of neutral lipids, including cholesteryl ester and triglyceride, among lipoprotein particles. Allows the net movement of cholesteryl ester from high density lipoproteins/HDL to triglyceride-rich very low density lipoproteins/VLDL, and the equimolar transport of triglyceride from VLDL to HDL (PubMed:<a href="http://www.uniprot.org/citations/24293641" target="\_blank">24293641</a>, PubMed:<a href="http://www.uniprot.org/citations/3281933" target="\_blank">3281933</a>, PubMed:<a href="http://www.uniprot.org/citations/3600759" target="\_blank">3600759</a>). Regulates the reverse cholesterol transport, by which excess cholesterol is removed from peripheral tissues and returned to the liver for elimination (PubMed:<a href="http://www.uniprot.org/citations/17237796" target="\_blank">17237796</a>).

### Cellular Location

Secreted. Note=Secreted in plasma

### Tissue Location

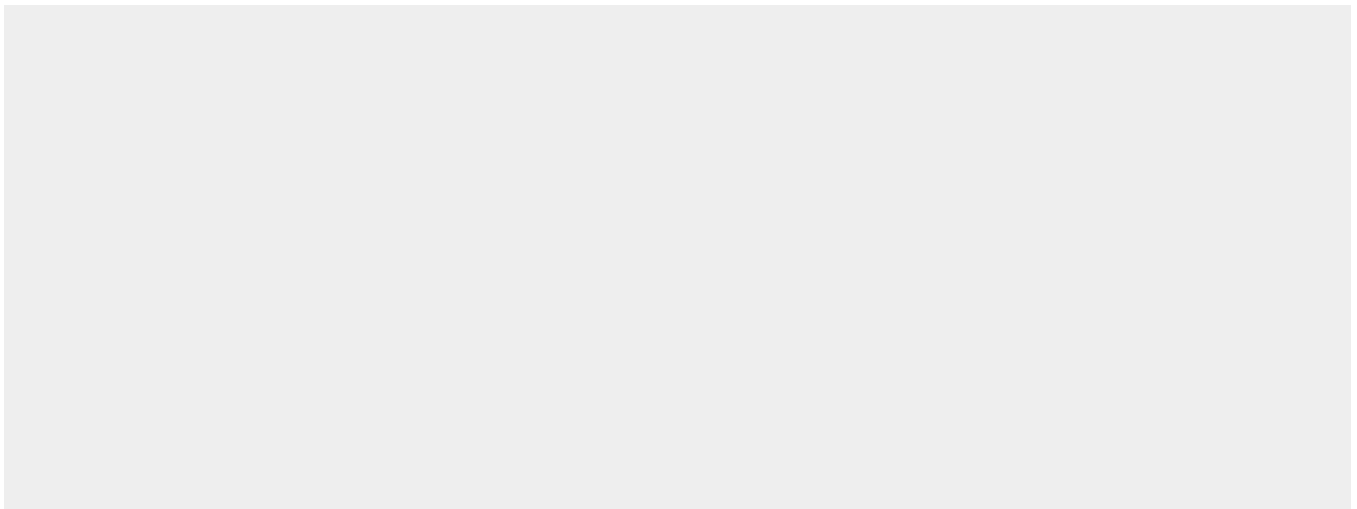
Expressed by the liver and secreted in plasma.

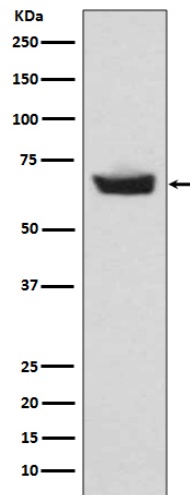
## Anti-CETP Rabbit Monoclonal Antibody - Protocols

Provided below are standard protocols that you may find useful for product applications.

- [Western Blot](#)
- [Blocking Peptides](#)
- [Dot Blot](#)
- [Immunohistochemistry](#)
- [Immunofluorescence](#)
- [Immunoprecipitation](#)
- [Flow Cytometry](#)
- [Cell Culture](#)

## Anti-CETP Rabbit Monoclonal Antibody - Images





Western blot analysis of CETP expression in human plasma lysate.