

Anti-CD63 Rabbit Monoclonal Antibody
Catalog # ABO13340**Specification****Anti-CD63 Rabbit Monoclonal Antibody - Product Information**

Application	WB, IHC
Primary Accession	P08962
Host	Rabbit
Isotype	Rabbit IgG
Reactivity	Human
Clonality	Monoclonal
Format	Liquid

Description

Anti-CD63 Rabbit Monoclonal Antibody . Tested in WB, IHC applications. This antibody reacts with Human.

Anti-CD63 Rabbit Monoclonal Antibody - Additional Information

Gene ID 967

Other Names

CD63 antigen, Granulophysin, Lysosomal-associated membrane protein 3, LAMP-3, Lysosome integral membrane protein 1, Limp1, Melanoma-associated antigen ME491, OMA81H, Ocular melanoma-associated antigen, Tetraspanin-30, Tspan-30, CD63, CD63, MLA1, TSPAN30

Calculated MW

25637 MW KDa

Application Details

WB 1:1000-1:2000
IHC 1:500-1:1000

Subcellular Localization

Cell membrane; Multi-pass membrane protein. Lysosome membrane; Multi-pass membrane protein. Late endosome membrane; Multi-pass membrane protein. Endosome, multivesicular body. Melanosome. Also found in Weibel-Palade bodies of endothelial cells. Located in platelet dense granules. Detected in a subset of pre-melanosomes. Detected on intraluminal vesicles (ILVs) within multivesicular bodies.

Tissue Specificity

Detected in platelets (at protein level). Dysplastic nevi, radial growth phase primary melanomas, hematopoietic cells, tissue macrophages..

Contents

Rabbit IgG in phosphate buffered saline, pH 7.4, 150mM NaCl, 0.02% sodium azide and 50% glycerol, 0.4-0.5mg/ml BSA.

Immunogen

A synthesized peptide derived from human CD63

Purification

Affinity-chromatography

Storage**Store at -20°C for one year. For short term storage and frequent use, store at 4°C for up to one month. Avoid repeated freeze-thaw cycles.****Anti-CD63 Rabbit Monoclonal Antibody - Protein Information****Name** CD63**Synonyms** MLA1, TSPAN30**Function**

Functions as a cell surface receptor for TIMP1 and plays a role in the activation of cellular signaling cascades. Plays a role in the activation of ITGB1 and integrin signaling, leading to the activation of AKT, FAK/PTK2 and MAP kinases. Promotes cell survival, reorganization of the actin cytoskeleton, cell adhesion, spreading and migration, via its role in the activation of AKT and FAK/PTK2. Plays a role in VEGFA signaling via its role in regulating the internalization of KDR/VEGFR2. Plays a role in intracellular vesicular transport processes, and is required for normal trafficking of the PMEL luminal domain that is essential for the development and maturation of melanocytes. Plays a role in the adhesion of leukocytes onto endothelial cells via its role in the regulation of SELP trafficking. May play a role in mast cell degranulation in response to Ms4a2/FcεRI stimulation, but not in mast cell degranulation in response to other stimuli.

Cellular Location

Cell membrane; Multi-pass membrane protein. Lysosome membrane; Multi-pass membrane protein. Late endosome membrane; Multi-pass membrane protein. Endosome, multivesicular body. Melanosome. Secreted, extracellular exosome. Cell surface. Note=Also found in Weibel-Palade bodies of endothelial cells (PubMed:10793155). Located in platelet dense granules (PubMed:7682577). Detected in a subset of pre-melanosomes Detected on intraluminal vesicles (ILVs) within multivesicular bodies (PubMed:21962903).

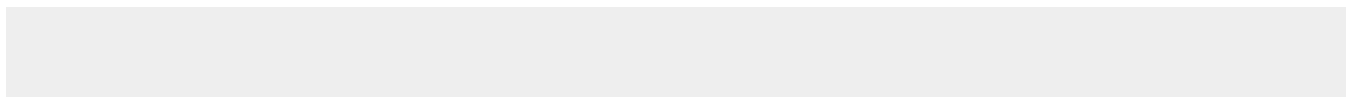
Tissue Location

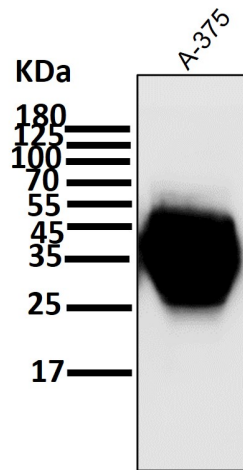
Detected in platelets (at protein level). Dysplastic nevi, radial growth phase primary melanomas, hematopoietic cells, tissue macrophages.

Anti-CD63 Rabbit Monoclonal Antibody - Protocols

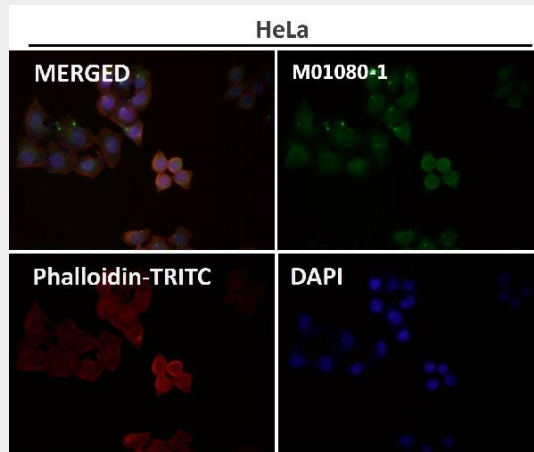
Provided below are standard protocols that you may find useful for product applications.

- [Western Blot](#)
- [Blocking Peptides](#)
- [Dot Blot](#)
- [Immunohistochemistry](#)
- [Immunofluorescence](#)
- [Immunoprecipitation](#)
- [Flow Cytometry](#)
- [Cell Culture](#)

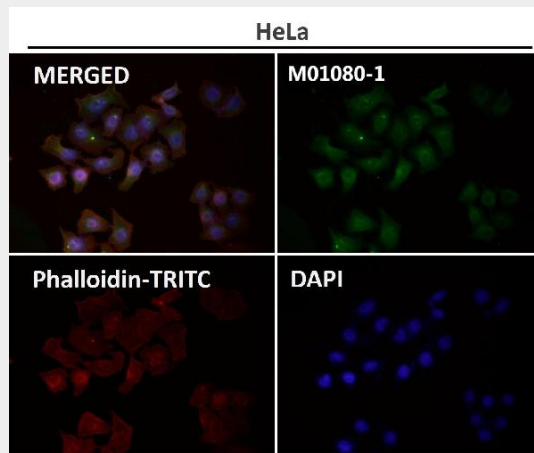
Anti-CD63 Rabbit Monoclonal Antibody - Images



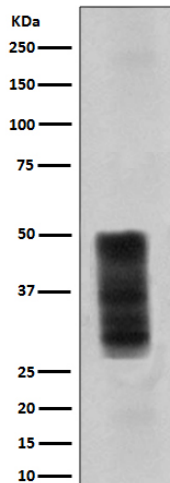
All lanes use the Antibody at 1:1K dilution for 1 hour at room temperature.



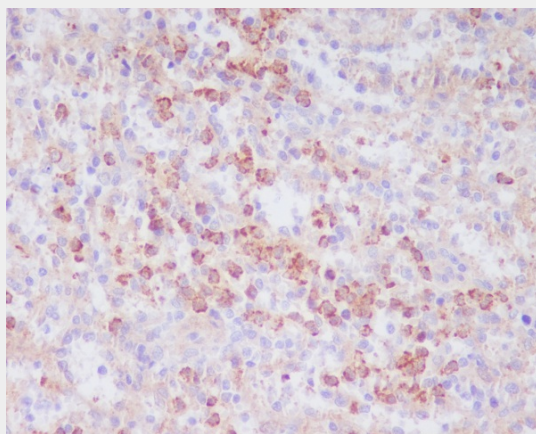
Immunofluorescent analysis using the Antibody at 1:50 dilution.



Immunofluorescent analysis using the Antibody at 1:50 dilution.



Western blot analysis of CD63 expression in A375 cell lysate.



Immunohistochemical analysis of paraffin-embedded human spleen, using CD63 Antibody.