

Anti-CDC7 Rabbit Monoclonal Antibody
Catalog # ABO13339**Specification**

Anti-CDC7 Rabbit Monoclonal Antibody - Product Information

Application	WB, FC
Primary Accession	O00311
Host	Rabbit
Isotype	Rabbit IgG
Reactivity	Rat, Human, Mouse
Clonality	Monoclonal
Format	Liquid

Description

Anti-CDC7 Rabbit Monoclonal Antibody . Tested in WB, Flow Cytometry applications. This antibody reacts with Human, Mouse, Rat.

Anti-CDC7 Rabbit Monoclonal Antibody - Additional Information

Gene ID 8317

Other Names

Cell division cycle 7-related protein kinase, CDC7-related kinase, HsCdc7, huCdc7, 2.7.11.1, CDC7 (http://www.genenames.org/cgi-bin/gene_symbol_report?hgnc_id=1745), CDC7L1

Calculated MW

63888 MW KDa

Application Details

WB 1:1000-1:2000
FC 1:100

Subcellular Localization

Nucleus.

Contents

Rabbit IgG in phosphate buffered saline, pH 7.4, 150mM NaCl, 0.02% sodium azide and 50% glycerol, 0.4-0.5mg/ml BSA.

Immunogen

A synthesized peptide derived from human CDC7

Purification

Affinity-chromatography

Storage

Store at -20°C for one year. For short term storage and frequent use, store at 4°C for up to one month. Avoid repeated freeze-thaw cycles.

Anti-CDC7 Rabbit Monoclonal Antibody - Protein Information

Name CDC7 ([HGNC:1745](#))

Synonyms CDC7L1

Function

Kinase involved in initiation of DNA replication. Phosphorylates critical substrates that regulate the G1/S phase transition and initiation of DNA replication, such as MCM proteins and CLASPIN.

Cellular Location

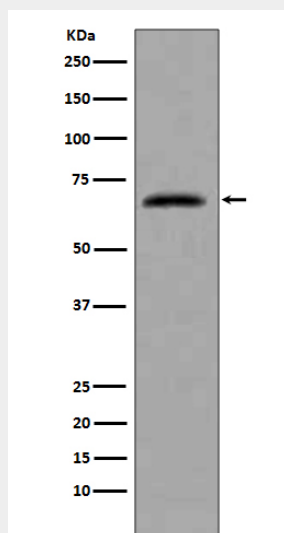
Nucleus.

Anti-CDC7 Rabbit Monoclonal Antibody - Protocols

Provided below are standard protocols that you may find useful for product applications.

- [Western Blot](#)
- [Blocking Peptides](#)
- [Dot Blot](#)
- [Immunohistochemistry](#)
- [Immunofluorescence](#)
- [Immunoprecipitation](#)
- [Flow Cytometry](#)
- [Cell Culture](#)

Anti-CDC7 Rabbit Monoclonal Antibody - Images



Western blot analysis of extracts from HeLa cells, using CDC7 antibody.