

Anti-CD86/B7 2 Rabbit Monoclonal Antibody
Catalog # ABO13337

Specification

Anti-CD86/B7 2 Rabbit Monoclonal Antibody - Product Information

Application	WB, IHC, IF, ICC, IP, FC
Primary Accession	P42081
Host	Rabbit
Isotype	Rabbit IgG
Reactivity	Rat, Human, Mouse
Clonality	Monoclonal
Format	Liquid

Description

Anti-CD86/B7 2 Rabbit Monoclonal Antibody . Tested in WB, IHC, ICC/IF, IP, Flow Cytometry applications. This antibody reacts with Human, Mouse, Rat.

Anti-CD86/B7 2 Rabbit Monoclonal Antibody - Additional Information

Gene ID 942

Other Names

T-lymphocyte activation antigen CD86, Activation B7-2 antigen, B70, BU63, CTLA-4 counter-receptor B7.2, FUN-1, CD86, CD86, CD28LG2

Calculated MW

37682 MW KDa

Application Details

WB 1:1000-1:2000
IHC 1:50-1:200
ICC/IF 1:50-1:200
IP 1:50
FC 1:50

Subcellular Localization

Cell membrane; Single-pass type I membrane protein.

Tissue Specificity

Expressed by activated B-lymphocytes and monocytes.

Contents

Rabbit IgG in phosphate buffered saline, pH 7.4, 150mM NaCl, 0.02% sodium azide and 50% glycerol, 0.4-0.5mg/ml BSA.

Immunogen

A synthesized peptide derived from human CD86

Purification

Affinity-chromatography

Storage

Store at -20°C for one year. For short term storage and frequent use, store at 4°C for up to one month. Avoid repeated

freeze-thaw cycles.

Anti-CD86/B7 2 Rabbit Monoclonal Antibody - Protein Information

Name CD86

Synonyms CD28LG2

Function

Receptor involved in the costimulatory signal essential for T-lymphocyte proliferation and interleukin-2 production, by binding CD28 or CTLA-4 (PubMed:12196291). May play a critical role in the early events of T-cell activation and costimulation of naive T-cells, such as deciding between immunity and anergy that is made by T-cells within 24 hours after activation (PubMed:7527824). Also involved in the regulation of B cells function, plays a role in regulating the level of IgG(1) produced. Upon CD40 engagement, activates NF-kappa-B signaling pathway via phospholipase C and protein kinase C activation (By similarity).

Cellular Location

Cell membrane; Single-pass type I membrane protein

Tissue Location

Expressed by activated B-lymphocytes and monocytes.

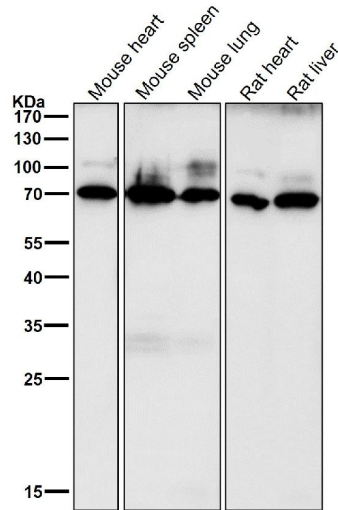
Anti-CD86/B7 2 Rabbit Monoclonal Antibody - Protocols

Provided below are standard protocols that you may find useful for product applications.

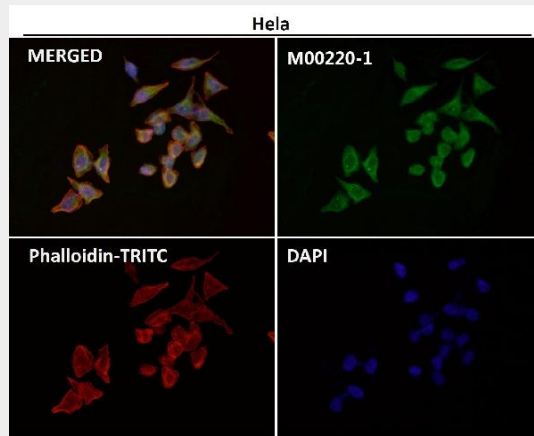
- [Western Blot](#)
- [Blocking Peptides](#)
- [Dot Blot](#)
- [Immunohistochemistry](#)
- [Immunofluorescence](#)
- [Immunoprecipitation](#)
- [Flow Cytometry](#)
- [Cell Culture](#)

Anti-CD86/B7 2 Rabbit Monoclonal Antibody - Images

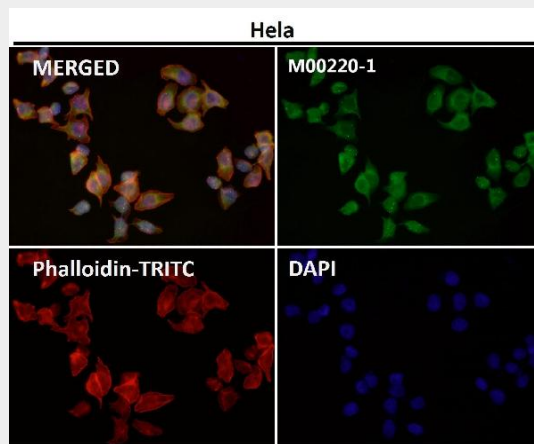




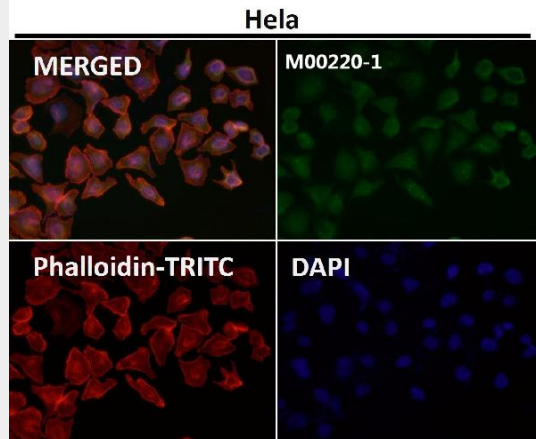
All lanes use the Antibody at 1:3K dilution for 1 hour at room temperature.



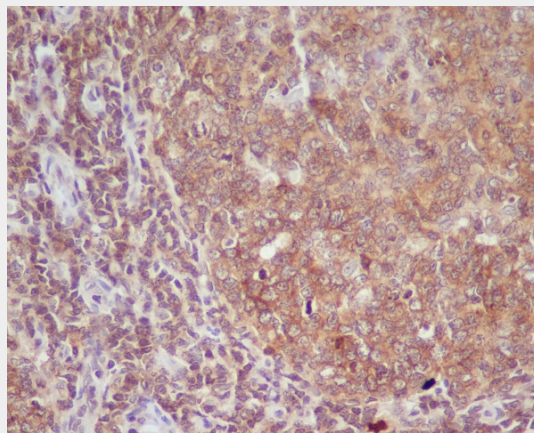
Immunofluorescent analysis using the Antibody at 1:50 dilution.



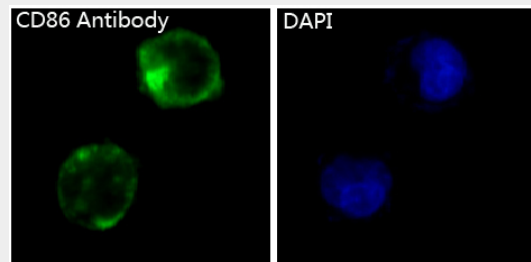
Immunofluorescent analysis using the Antibody at 1:50 dilution.



Immunofluorescent analysis using the Antibody at 1:150 dilution.



Immunohistochemical analysis of paraffin-embedded human tonsil, using CD86 Antibody .



Immunofluorescent analysis of K562 cells, using CD86 Antibody .

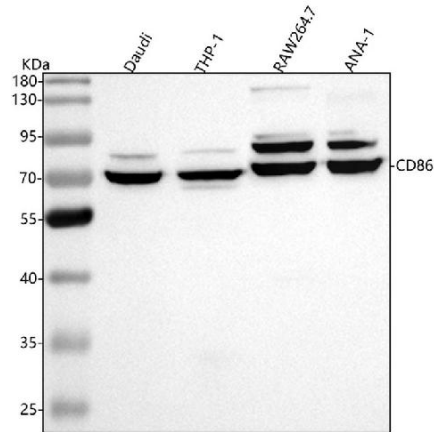


Figure 1. Western blot analysis of CD86 using anti-CD86 antibody (M00220-1).

Electrophoresis was performed on a 5-20% SDS-PAGE gel at 70V (Stacking gel) / 90V (Resolving gel) for 2-3 hours. The sample well of each lane was loaded with 30 ug of sample under reducing conditions.

Lane 1: human Daudi whole cell lysates,

Lane 2: human THP-1 whole cell lysates,

Lane 3: mouse RAW264.7 whole cell lysates,

Lane 4: mouse ANA-1 whole cell lysates.

After electrophoresis, proteins were transferred to a nitrocellulose membrane at 150 mA for 50-90 minutes. Blocked the membrane with 5% non-fat milk/TBS for 1.5 hour at RT. The membrane was incubated with rabbit anti-CD86 antigen affinity purified monoclonal antibody (Catalog # M00220-1) at 1:1000 overnight at 4°C, then washed with TBS-0.1%Tween 3 times with 5 minutes each and probed with a goat anti-rabbit IgG-HRP secondary antibody at a dilution of 1:5000 for 1.5 hour at RT. The signal is developed using an Enhanced Chemiluminescent detection (ECL) kit (Catalog # EK1002) with Tanon 5200 system. A specific band was detected for CD86 at approximately 70 kDa. The expected band size for CD86 is at 38 kDa.