

**Anti-CD20 MS4A1 Rabbit Monoclonal Antibody**  
Catalog # ABO13318

**Specification**

**Anti-CD20 MS4A1 Rabbit Monoclonal Antibody - Product Information**

Application	WB, IHC, FC
Primary Accession	<a href="#">P11836</a>
Host	Rabbit
Isotype	Rabbit IgG
Reactivity	Human
Clonality	Monoclonal
Format	Liquid

**Description**

Anti-CD20 MS4A1 Rabbit Monoclonal Antibody . Tested in WB, IHC, Flow Cytometry applications. This antibody reacts with Human.

**Anti-CD20 MS4A1 Rabbit Monoclonal Antibody - Additional Information**

**Gene ID** 931

**Other Names**

B-lymphocyte antigen CD20, B-lymphocyte surface antigen B1, Bp35, Leukocyte surface antigen Leu-16, Membrane-spanning 4-domains subfamily A member 1, CD20, MS4A1, CD20

**Calculated MW**

33077 MW KDa

**Application Details**

WB 1:500-1:2000<br>IHC 1:50-1:200<br>FC 1:50-1:200

**Subcellular Localization**

Cell membrane ; Multi-pass membrane protein. Cell membrane ; Lipid-anchor.

**Tissue Specificity**

Expressed on B-cells.

**Contents**

Rabbit IgG in phosphate buffered saline, pH 7.4, 150mM NaCl, 0.02% sodium azide and 50% glycerol, 0.4-0.5mg/ml BSA.

**Immunogen**

A synthesized peptide derived from human CD20

**Purification**

Affinity-chromatography

**Storage**

**Store at -20°C for one year. For short term storage and frequent use, store at 4°C for up to one month. Avoid repeated**

freeze-thaw cycles.

## Anti-CD20 MS4A1 Rabbit Monoclonal Antibody - Protein Information

**Name** MS4A1

**Synonyms** CD20

### Function

B-lymphocyte-specific membrane protein that plays a role in the regulation of cellular calcium influx necessary for the development, differentiation, and activation of B-lymphocytes (PubMed:<a href="http://www.uniprot.org/citations/12920111" target="\_blank">12920111</a>, PubMed:<a href="http://www.uniprot.org/citations/3925015" target="\_blank">3925015</a>, PubMed:<a href="http://www.uniprot.org/citations/7684739" target="\_blank">7684739</a>). Functions as a store-operated calcium (SOC) channel component promoting calcium influx after activation by the B-cell receptor/BCR (PubMed:<a href="http://www.uniprot.org/citations/12920111" target="\_blank">12920111</a>, PubMed:<a href="http://www.uniprot.org/citations/18474602" target="\_blank">18474602</a>, PubMed:<a href="http://www.uniprot.org/citations/7684739" target="\_blank">7684739</a>).

### Cellular Location

Cell membrane; Multi-pass membrane protein. Cell membrane; Lipid-anchor. Note=Constitutively associated with membrane rafts.

### Tissue Location

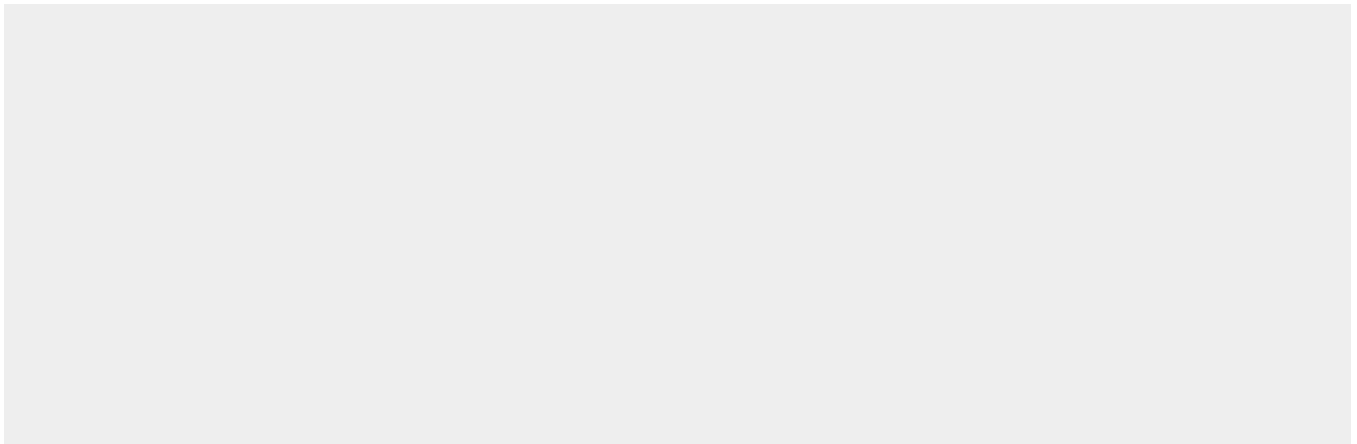
Expressed on B-cells.

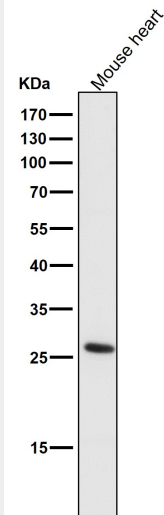
## Anti-CD20 MS4A1 Rabbit Monoclonal Antibody - Protocols

Provided below are standard protocols that you may find useful for product applications.

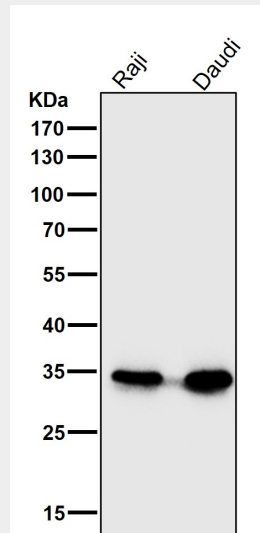
- [Western Blot](#)
- [Blocking Peptides](#)
- [Dot Blot](#)
- [Immunohistochemistry](#)
- [Immunofluorescence](#)
- [Immunoprecipitation](#)
- [Flow Cytometry](#)
- [Cell Culture](#)

## Anti-CD20 MS4A1 Rabbit Monoclonal Antibody - Images

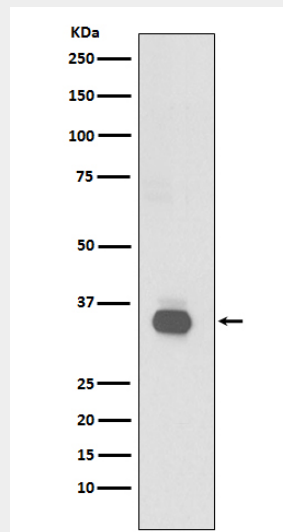




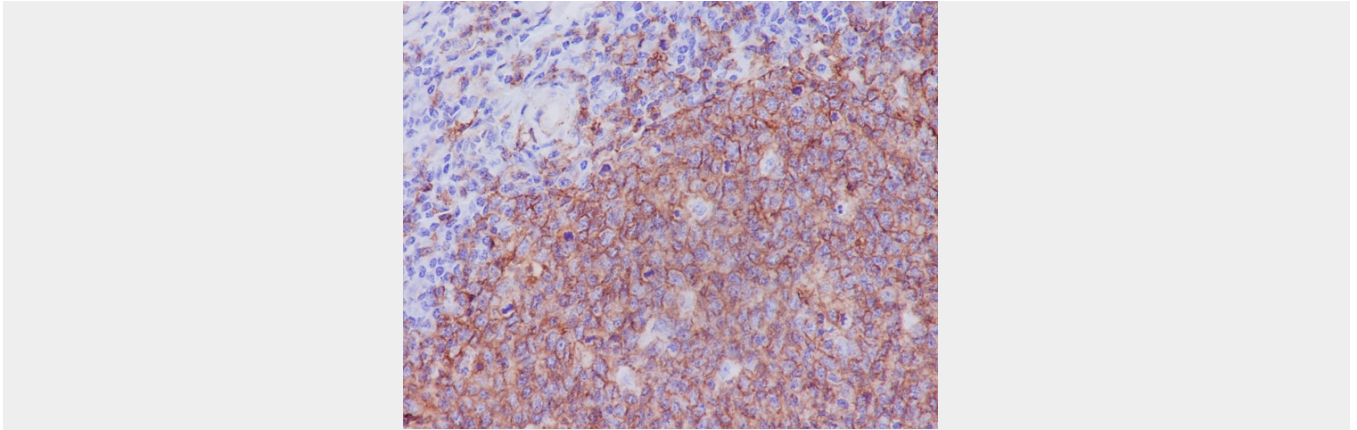
All lanes use the Antibody at 1:5K dilution for 1 hour at room temperature.



All lanes use the Antibody at 1:5K dilution for 1 hour at room temperature.



Western blot analysis of CD20 expression in Raji cell lysate.



Immunohistochemical analysis of paraffin-embedded human tonsil, using CD20 Antibody.