

Anti-KDEL Rabbit Monoclonal Antibody Catalog # ABO13317

Specification

Anti-KDEL Rabbit Monoclonal Antibody - Product Information

Application	WB, IHC, IF, ICC, FC
Primary Accession	P24390
Host	Rabbit
Isotype	Rabbit IgG
Reactivity	Rat, Human, Mouse
Clonality	Monoclonal
Format	Liquid

Description

Anti-KDEL Rabbit Monoclonal Antibody . Tested in WB, IHC, ICC/IF, Flow Cytometry applications. This antibody reacts with Human, Mouse, Rat.

Anti-KDEL Rabbit Monoclonal Antibody - Additional Information

Gene ID 10945

Other Names

ER lumen protein-retaining receptor 1, KDEL endoplasmic reticulum protein retention receptor 1, KDEL receptor 1, Putative MAPK-activating protein PM23, KDELR1, ERD2.1

Calculated MW

24542 MW KDa

Application Details

WB 1:500-1:2000
IHC 1:50-1:200
ICC/IF 1:50-1:200
FC 1:50

Subcellular Localization

Cytoplasmic vesicle, COPI-coated vesicle membrane ; Multi-pass membrane protein. Endoplasmic reticulum membrane ; Multi-pass membrane protein. Endoplasmic reticulum-Golgi intermediate compartment membrane.

Contents

Rabbit IgG in phosphate buffered saline, pH 7.4, 150mM NaCl, 0.02% sodium azide and 50% glycerol, 0.4-0.5mg/ml BSA.

Immunogen

A synthesized peptide derived from human KDEL

Purification

Affinity-chromatography

Storage

Store at -20°C for one year. For short term storage and frequent use, store at 4°C for up to one month. Avoid repeated freeze-thaw cycles.

Anti-KDEL Rabbit Monoclonal Antibody - Protein Information

Name KDELR1

Synonyms ERD2.1

Function

Receptor for the C-terminal sequence motif K-D-E-L that is present on endoplasmic reticulum resident proteins and that mediates their recycling from the Golgi back to the endoplasmic reticulum.

Cellular Location

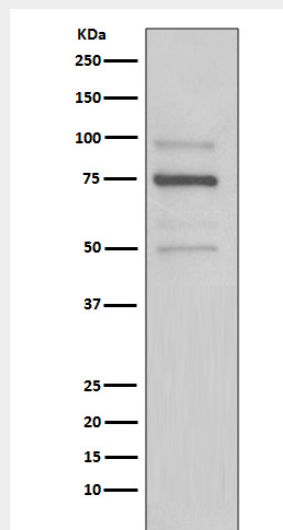
Golgi apparatus membrane; Multi-pass membrane protein {ECO:0000250|UniProtKB:P33946}. Cytoplasmic vesicle, COPI-coated vesicle membrane; Multi-pass membrane protein {ECO:0000250|UniProtKB:P33946}. Endoplasmic reticulum membrane; Multi-pass membrane protein {ECO:0000250|UniProtKB:P33946}. Endoplasmic reticulum-Golgi intermediate compartment membrane {ECO:0000250|UniProtKB:P33946}; Multi-pass membrane protein {ECO:0000250|UniProtKB:P33946} Note=Localized in the Golgi in the absence of bound proteins with the sequence motif K-D-E-L. Trafficks back to the endoplasmic reticulum together with cargo proteins containing the sequence motif K-D-E-L

Anti-KDEL Rabbit Monoclonal Antibody - Protocols

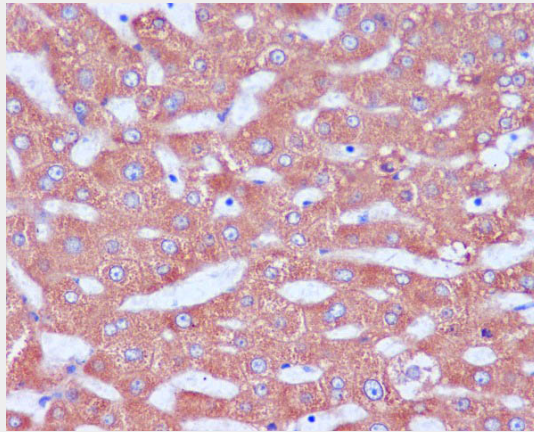
Provided below are standard protocols that you may find useful for product applications.

- [Western Blot](#)
- [Blocking Peptides](#)
- [Dot Blot](#)
- [Immunohistochemistry](#)
- [Immunofluorescence](#)
- [Immunoprecipitation](#)
- [Flow Cytometry](#)
- [Cell Culture](#)

Anti-KDEL Rabbit Monoclonal Antibody - Images



Western blot analysis of KDEL expression in HeLa cell lysate.



Immunohistochemical analysis of paraffin-embedded human liver, using KDEL Antibody.