

Anti-ENO1/Alpha Enolase Rabbit Monoclonal Antibody Catalog # ABO13306

Specification

Anti-ENO1/Alpha Enolase Rabbit Monoclonal Antibody - Product Information

Application	WB, IF, ICC, IP
Primary Accession	P06733
Host	Rabbit
Isotype	Rabbit IgG
Reactivity	Rat, Human, Mouse
Clonality	Monoclonal
Format	Liquid

Description

Anti-ENO1/Alpha Enolase Rabbit Monoclonal Antibody . Tested in WB, ICC/IF, IP applications. This antibody reacts with Human, Mouse, Rat.

Anti-ENO1/Alpha Enolase Rabbit Monoclonal Antibody - Additional Information

Gene ID 2023

Other Names

Alpha-enolase, 4.2.1.11, 2-phospho-D-glycerate hydro-lyase, C-myc promoter-binding protein, Enolase 1, MBP-1, MPB-1, Non-neural enolase, NNE, Phosphopyruvate hydratase, Plasminogen-binding protein, ENO1, ENO1L1, MBPB1, MPB1

Calculated MW

47169 MW KDa

Application Details

WB 1:500-1:2000
ICC/IF 1:50-1:200
IP 1:50

Subcellular Localization

Cytoplasm. Cell membrane. Cytoplasm, myofibril, sarcomere, M line. Can translocate to the plasma membrane in either the homodimeric (alpha/alpha) or heterodimeric (alpha/gamma) form. ENO1 is localized to the M line.

Tissue Specificity

The alpha/alpha homodimer is expressed in embryo and in most adult tissues. The alpha/beta heterodimer and the beta/beta homodimer are found in striated muscle, and the alpha/gamma heterodimer and the gamma/gamma homodimer in neurons.

Contents

Rabbit IgG in phosphate buffered saline, pH 7.4, 150mM NaCl, 0.02% sodium azide and 50% glycerol, 0.4-0.5mg/ml BSA.

Immunogen

A synthesized peptide derived from human ENO1

Purification

Affinity-chromatography

Storage

Store at -20°C for one year. For short term storage and frequent use, store at 4°C for up to one month. Avoid repeated freeze-thaw cycles.

Anti-ENO1/Alpha Enolase Rabbit Monoclonal Antibody - Protein Information

Name ENO1

Synonyms ENO1L1, MBPB1, MPB1

Function

Glycolytic enzyme that catalyzes the conversion of 2-phosphoglycerate to phosphoenolpyruvate (PubMed: [1369209](http://www.uniprot.org/citations/1369209), PubMed: [29775581](http://www.uniprot.org/citations/29775581)). In addition to glycolysis, involved in various processes such as growth control, hypoxia tolerance and allergic responses (PubMed: [10802057](http://www.uniprot.org/citations/10802057), PubMed: [12666133](http://www.uniprot.org/citations/12666133), PubMed: [2005901](http://www.uniprot.org/citations/2005901), PubMed: [29775581](http://www.uniprot.org/citations/29775581)). May also function in the intravascular and pericellular fibrinolytic system due to its ability to serve as a receptor and activator of plasminogen on the cell surface of several cell-types such as leukocytes and neurons (PubMed: [12666133](http://www.uniprot.org/citations/12666133)). Stimulates immunoglobulin production (PubMed: [1369209](http://www.uniprot.org/citations/1369209)).

Cellular Location

Cytoplasm. Cell membrane. Cytoplasm, myofibril, sarcomere, M line. Note=Can translocate to the plasma membrane in either the homodimeric (alpha/alpha) or heterodimeric (alpha/gamma) form. ENO1 is localized to the M line

Tissue Location

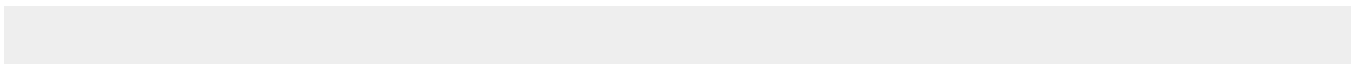
The alpha/alpha homodimer is expressed in embryo and in most adult tissues. The alpha/beta heterodimer and the beta/beta homodimer are found in striated muscle, and the alpha/gamma heterodimer and the gamma/gamma homodimer in neurons

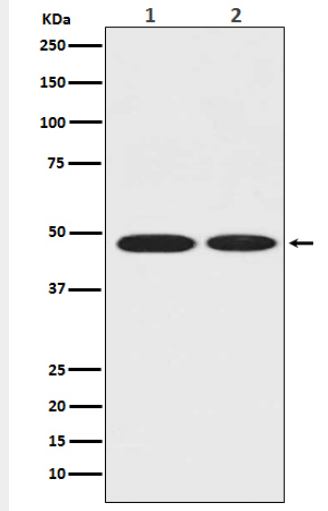
Anti-ENO1/Alpha Enolase Rabbit Monoclonal Antibody - Protocols

Provided below are standard protocols that you may find useful for product applications.

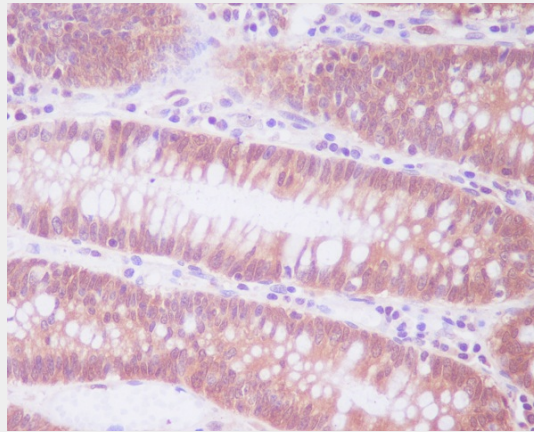
- [Western Blot](#)
- [Blocking Peptides](#)
- [Dot Blot](#)
- [Immunohistochemistry](#)
- [Immunofluorescence](#)
- [Immunoprecipitation](#)
- [Flow Cytometry](#)
- [Cell Culture](#)

Anti-ENO1/Alpha Enolase Rabbit Monoclonal Antibody - Images





Western blot analysis of ENO1 in (1) MCF-7 whole cell lysate; (2) Rat brain tissue lysate.



Immunohistochemical analysis of paraffin-embedded human colon, using ENO1 Antibody.