

Anti-MIF Rabbit Monoclonal Antibody
Catalog # ABO13288

Specification

Anti-MIF Rabbit Monoclonal Antibody - Product Information

Application	WB, IP, FC
Primary Accession	P14174
Host	Rabbit
Isotype	Rabbit IgG
Reactivity	Rat, Human, Mouse
Clonality	Monoclonal
Format	Liquid

Description

Anti-MIF Rabbit Monoclonal Antibody . Tested in WB, IP, Flow Cytometry applications. This antibody reacts with Human, Mouse, Rat.

Anti-MIF Rabbit Monoclonal Antibody - Additional Information

Gene ID 4282

Other Names

Macrophage migration inhibitory factor, MIF, 5.3.2.1, Glycosylation-inhibiting factor, L-dopachrome isomerase, L-dopachrome tautomerase, 5.3.3.12, Phenylpyruvate tautomerase, MIF {ECO:0000303|PubMed:2552447, ECO:0000312|HGNC:HGNC:7097}

Calculated MW

12476 MW KDa

Application Details

WB 1:500-1:2000
IP 1:50
FC 1:50

Subcellular Localization

Secreted. Cytoplasm. Does not have a cleavable signal sequence and is secreted via a specialized, non- classical pathway. Secreted by macrophages upon stimulation by bacterial lipopolysaccharide (LPS), or by M.tuberculosis antigens.

Contents

Rabbit IgG in phosphate buffered saline, pH 7.4, 150mM NaCl, 0.02% sodium azide and 50% glycerol, 0.4-0.5mg/ml BSA.

Immunogen

A synthesized peptide derived from human MIF

Purification

Affinity-chromatography

Storage

Store at -20°C for one year. For short term storage and frequent use, store at 4°C for up to one month. Avoid repeated

freeze-thaw cycles.

Anti-MIF Rabbit Monoclonal Antibody - Protein Information

Name MIF {ECO:0000303|PubMed:2552447, ECO:0000312|HGNC:HGNC:7097}

Function

Pro-inflammatory cytokine involved in the innate immune response to bacterial pathogens (PubMed:15908412, PubMed:17443469, PubMed:23776208). The expression of MIF at sites of inflammation suggests a role as mediator in regulating the function of macrophages in host defense (PubMed:15908412, PubMed:17443469, PubMed:23776208). Counteracts the anti-inflammatory activity of glucocorticoids (PubMed:15908412, PubMed:17443469, PubMed:23776208). Has phenylpyruvate tautomerase and dopachrome tautomerase activity (in vitro), but the physiological substrate is not known (PubMed:11439086, PubMed:17526494). It is not clear whether the tautomerase activity has any physiological relevance, and whether it is important for cytokine activity (PubMed:11439086, PubMed:17526494).

Cellular Location

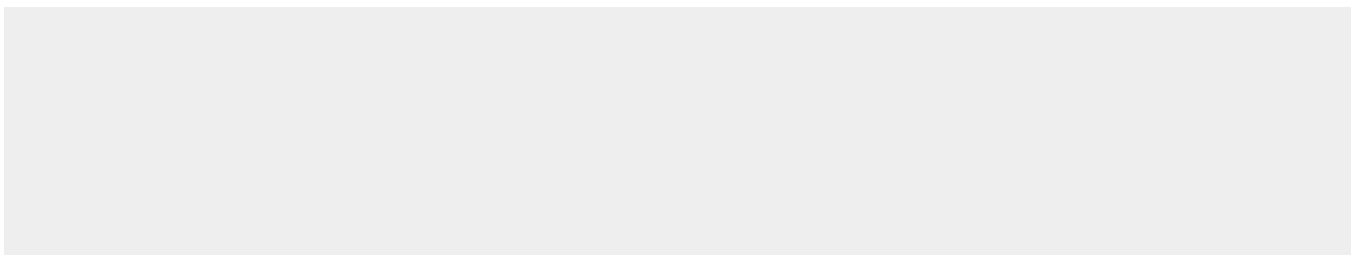
Secreted. Cytoplasm. Note=Does not have a cleavable signal sequence and is secreted via a specialized, non-classical pathway Secreted by macrophages upon stimulation by bacterial lipopolysaccharide (LPS), or by M.tuberculosis antigens

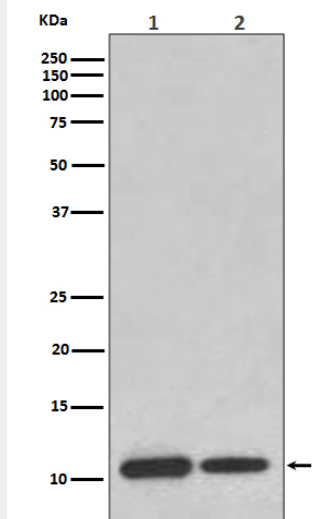
Anti-MIF Rabbit Monoclonal Antibody - Protocols

Provided below are standard protocols that you may find useful for product applications.

- [Western Blot](#)
- [Blocking Peptides](#)
- [Dot Blot](#)
- [Immunohistochemistry](#)
- [Immunofluorescence](#)
- [Immunoprecipitation](#)
- [Flow Cytometry](#)
- [Cell Culture](#)

Anti-MIF Rabbit Monoclonal Antibody - Images





Western blot analysis of MIF expression in (1) THP-1 cell lysate; (2) Mouse brain lysate.