

**Anti-EGF Rabbit Monoclonal Antibody**  
**Catalog # ABO13285****Specification**

---

**Anti-EGF Rabbit Monoclonal Antibody - Product Information**

Application	WB, IP
Primary Accession	<a href="#">P01133</a>
Host	Rabbit
Isotype	Rabbit IgG
Reactivity	Human
Clonality	Monoclonal
Format	Liquid

**Description**

Anti-EGF Rabbit Monoclonal Antibody . Tested in WB, IP applications. This antibody reacts with Human.

**Anti-EGF Rabbit Monoclonal Antibody - Additional Information**

**Gene ID** 1950

**Other Names**

Pro-epidermal growth factor, EGF, Epidermal growth factor, Urogastrone, EGF

**Calculated MW**

133994 MW KDa

**Application Details**

WB 1:500-1:2000<br>IP 1:50

**Subcellular Localization**

Membrane; Single-pass type I membrane protein.

**Tissue Specificity**

Expressed in kidney, salivary gland, cerebrum and prostate..

**Contents**

Rabbit IgG in phosphate buffered saline, pH 7.4, 150mM NaCl, 0.02% sodium azide and 50% glycerol, 0.4-0.5mg/ml BSA.

**Immunogen**

A synthesized peptide derived from human EGF

**Purification**

Affinity-chromatography

**Storage**

**Store at -20°C for one year. For short term storage and frequent use, store at 4°C for up to one month. Avoid repeated freeze-thaw cycles.**

## Anti-EGF Rabbit Monoclonal Antibody - Protein Information

**Name** EGF

### Function

EGF stimulates the growth of various epidermal and epithelial tissues in vivo and in vitro and of some fibroblasts in cell culture. Magnesiotropic hormone that stimulates magnesium reabsorption in the renal distal convoluted tubule via engagement of EGFR and activation of the magnesium channel TRPM6. Can induce neurite outgrowth in motoneurons of the pond snail *Lymnaea stagnalis* in vitro (PubMed: [10964941](http://www.uniprot.org/citations/10964941)).

### Cellular Location

Membrane; Single-pass type I membrane protein.

### Tissue Location

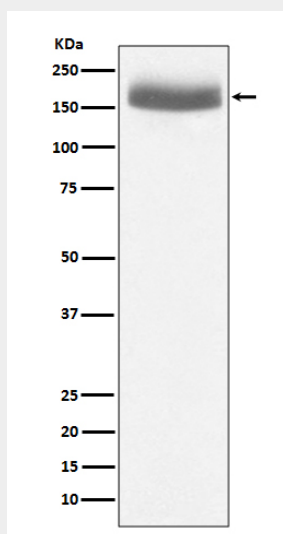
Expressed in kidney, salivary gland, cerebrum and prostate.

## Anti-EGF Rabbit Monoclonal Antibody - Protocols

Provided below are standard protocols that you may find useful for product applications.

- [Western Blot](#)
- [Blocking Peptides](#)
- [Dot Blot](#)
- [Immunohistochemistry](#)
- [Immunofluorescence](#)
- [Immunoprecipitation](#)
- [Flow Cytometry](#)
- [Cell Culture](#)

## Anti-EGF Rabbit Monoclonal Antibody - Images



Western blot analysis of EGF expression in human urine sample lysate.