

**Anti-TTR/Prealbumin Rabbit Monoclonal Antibody**  
Catalog # ABO13284

**Specification**

---

**Anti-TTR/Prealbumin Rabbit Monoclonal Antibody - Product Information**

Application	WB, IHC, IF, ICC, IP, FC
Primary Accession	<a href="#">P02766</a>
Host	Rabbit
Isotype	Rabbit IgG
Reactivity	Human
Clonality	Monoclonal
Format	Liquid

**Description**

Anti-TTR/Prealbumin Rabbit Monoclonal Antibody . Tested in WB, IHC, ICC/IF, IP, Flow Cytometry applications. This antibody reacts with Human.

**Anti-TTR/Prealbumin Rabbit Monoclonal Antibody - Additional Information**

**Gene ID** 7276

**Other Names**

Transthyretin, ATTR, Prealbumin, TBPA, TTR, PALB

**Calculated MW**

15887 MW KDa

**Application Details**

WB 1:500-1:2000<br>IHC 1:50-1:200<br>ICC/IF 1:50-1:200<br>IP 1:50<br>FC 1:50

**Subcellular Localization**

Secreted. Cytoplasm.

**Tissue Specificity**

Detected in serum and cerebrospinal fluid (at protein level). Highly expressed in choroid plexus epithelial cells. Detected in retina pigment epithelium and liver..

**Contents**

Rabbit IgG in phosphate buffered saline, pH 7.4, 150mM NaCl, 0.02% sodium azide and 50% glycerol, 0.4-0.5mg/ml BSA.

**Immunogen**

A synthesized peptide derived from human TTR

**Purification**

Affinity-chromatography

**Storage**

**Store at -20°C for one year. For short term storage and frequent use, store at 4°C for up to one month. Avoid repeated**

freeze-thaw cycles.

## Anti-TTR/Prealbumin Rabbit Monoclonal Antibody - Protein Information

**Name** TTR

**Synonyms** PALB

### Function

Thyroid hormone-binding protein. Probably transports thyroxine from the bloodstream to the brain.

### Cellular Location

Secreted. Cytoplasm.

### Tissue Location

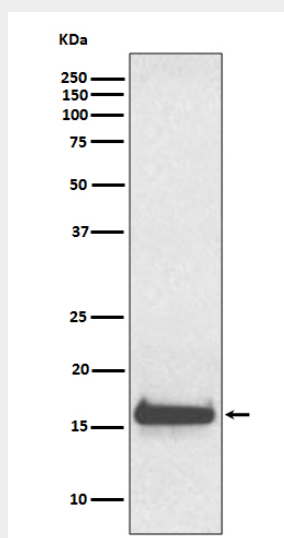
Detected in serum and cerebrospinal fluid (at protein level). Highly expressed in choroid plexus epithelial cells Detected in retina pigment epithelium and liver

## Anti-TTR/Prealbumin Rabbit Monoclonal Antibody - Protocols

Provided below are standard protocols that you may find useful for product applications.

- [Western Blot](#)
- [Blocking Peptides](#)
- [Dot Blot](#)
- [Immunohistochemistry](#)
- [Immunofluorescence](#)
- [Immunoprecipitation](#)
- [Flow Cytometry](#)
- [Cell Culture](#)

## Anti-TTR/Prealbumin Rabbit Monoclonal Antibody - Images



Western blot analysis of TTR expression in human serum lysate.