

**Anti-Bid Rabbit Monoclonal Antibody**  
Catalog # ABO13282

**Specification**

**Anti-Bid Rabbit Monoclonal Antibody - Product Information**

Application	WB, IHC, IF, ICC, IP, FC
Primary Accession	<a href="#">P55957</a>
Host	Rabbit
Isotype	Rabbit IgG
Reactivity	Human
Clonality	Monoclonal
Format	Liquid

**Description**

Anti-Bid Rabbit Monoclonal Antibody . Tested in WB, IHC, ICC/IF, IP, Flow Cytometry applications. This antibody reacts with Human.

**Anti-Bid Rabbit Monoclonal Antibody - Additional Information**

**Gene ID** 637

**Other Names**

BH3-interacting domain death agonist, p22 BID, BID, BH3-interacting domain death agonist p15, p15 BID, BH3-interacting domain death agonist p13, p13 BID, BH3-interacting domain death agonist p11, p11 BID, BID

**Calculated MW**

21995 MW KDa

**Application Details**

WB 1:500-1:1000<br>IHC 1:50-1:200<br>ICC/IF 1:50-1:200<br>IP 1:10<br>FC 1:50

**Subcellular Localization**

Cytoplasm. Mitochondrion membrane. When uncleaved, it is predominantly cytoplasmic..

**Tissue Specificity**

Isoform 2 and isoform 3 are expressed in spleen, bone marrow, cerebral and cerebellar cortex. Isoform 2 is expressed in spleen, pancreas and placenta (at protein level). Isoform 3 is expressed in lung, pancreas and spleen (at protein level). Isoform 4 is expressed in lung and pancreas (at protein level)..

**Contents**

Rabbit IgG in phosphate buffered saline, pH 7.4, 150mM NaCl, 0.02% sodium azide and 50% glycerol, 0.4-0.5mg/ml BSA.

**Immunogen**

A synthesized peptide derived from human Bid

**Purification**

Affinity-chromatography

**Storage**

**Store at -20°C for one year. For short term storage and frequent use, store at 4°C for up to one month. Avoid repeated freeze-thaw cycles.**

**Anti-Bid Rabbit Monoclonal Antibody - Protein Information****Name** BID**Function**

Induces caspases and apoptosis (PubMed:<a href="http://www.uniprot.org/citations/14583606" target="\_blank">14583606</a>). Counters the protective effect of BCL2 (By similarity).

**Cellular Location**

Cytoplasm. Mitochondrion membrane. Mitochondrion outer membrane. Note=When uncleaved, it is predominantly cytoplasmic. [BH3-interacting domain death agonist p13]: Mitochondrion membrane {ECO:0000250|UniProtKB:P70444}. Note=Associated with the mitochondrial membrane. {ECO:0000250|UniProtKB:P70444} [Isoform 3]: Cytoplasm

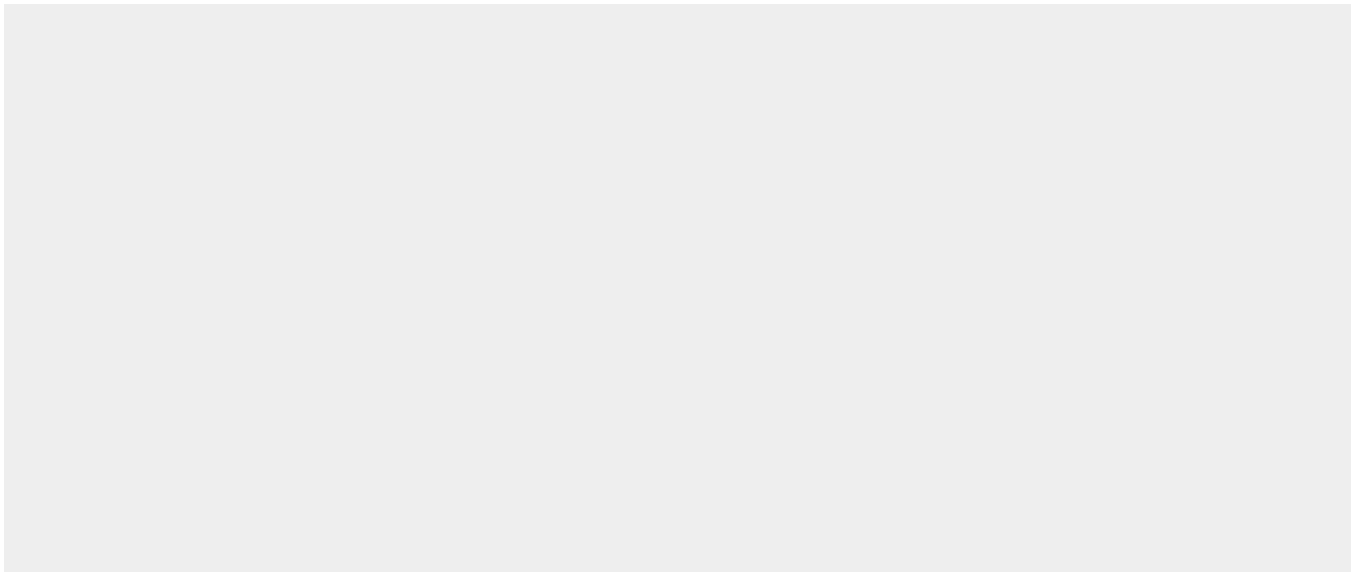
**Tissue Location**

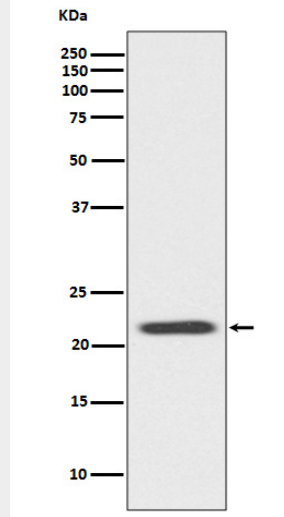
[Isoform 2]: Expressed in spleen, pancreas and placenta (at protein level). [Isoform 4]: Expressed in lung and pancreas (at protein level).

**Anti-Bid Rabbit Monoclonal Antibody - Protocols**

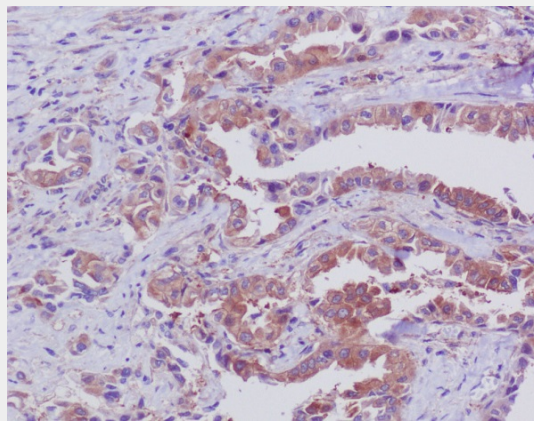
Provided below are standard protocols that you may find useful for product applications.

- [Western Blot](#)
- [Blocking Peptides](#)
- [Dot Blot](#)
- [Immunohistochemistry](#)
- [Immunofluorescence](#)
- [Immunoprecipitation](#)
- [Flow Cytometry](#)
- [Cell Culture](#)

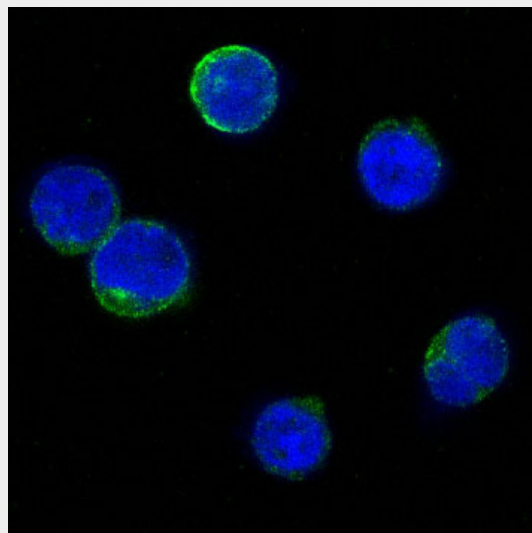
**Anti-Bid Rabbit Monoclonal Antibody - Images**



Western blot analysis of Bid expression in Jurkat cell lysate.



Immunohistochemical analysis of paraffin-embedded human lung, using Bid Antibody.



Immunofluorescent analysis of Jurkat cells, using Bid Antibody.