

Anti-IL4 Rabbit Monoclonal Antibody
Catalog # ABO13281

Specification

Anti-IL4 Rabbit Monoclonal Antibody - Product Information

Application	WB, IF, ICC
Primary Accession	P05112
Host	Rabbit
Isotype	Rabbit IgG
Reactivity	Human
Clonality	Monoclonal
Format	Liquid

Description

Anti-IL4 Rabbit Monoclonal Antibody . Tested in WB, ICC/IF applications. This antibody reacts with Human.

Anti-IL4 Rabbit Monoclonal Antibody - Additional Information

Gene ID 3565

Other Names

Interleukin-4, IL-4, B-cell stimulatory factor 1, BSF-1, Binetrakin, Lymphocyte stimulatory factor 1, Pitrakinra, IL4

Calculated MW

17492 MW KDa

Application Details

WB 1:500-1:2000
ICC/IF 1:50-1:200

Subcellular Localization

Secreted.

Contents

Rabbit IgG in phosphate buffered saline, pH 7.4, 150mM NaCl, 0.02% sodium azide and 50% glycerol, 0.4-0.5mg/ml BSA.

Immunogen

A synthesized peptide derived from human IL4

Purification

Affinity-chromatography

Storage

Store at -20°C for one year. For short term storage and frequent use, store at 4°C for up to one month. Avoid repeated freeze-thaw cycles.

Anti-IL4 Rabbit Monoclonal Antibody - Protein Information

Name IL4

Function

Cytokine secreted primarily by mast cells, T-cells, eosinophils, and basophils that plays a role in regulating antibody production, hematopoiesis and inflammation, and the development of effector T-cell responses (PubMed:1993171, PubMed:3016727). Induces the expression of class II MHC molecules on resting B-cells. Enhances both secretion and cell surface expression of IgE and IgG1 (PubMed:1993171). Regulates also the expression of the low affinity Fc receptor for IgE (CD23) on both lymphocytes and monocytes (PubMed:2521231). Positively regulates IL31RA expression in macrophages. Stimulates autophagy in dendritic cells by interfering with mTORC1 signaling and through the induction of RUFY4. In addition, plays a critical role in higher functions of the normal brain, such as memory and learning (By similarity). Upon binding to IL4, IL4R receptor dimerizes either with the common IL2R gamma chain/IL2RG to produce the type 1 signaling complex, located mainly on hematopoietic cells, or with the IL13RA1 to produce the type 2 complex, which is expressed also on nonhematopoietic cells (PubMed:10219247, PubMed:11526337, PubMed:18243101). Engagement of both types of receptors initiates JAK3 and to a lower extent JAK1 phosphorylation leading to activation of the signal transducer and activator of transcription 6/STAT6 (PubMed:7721895).

Cellular Location

Secreted.

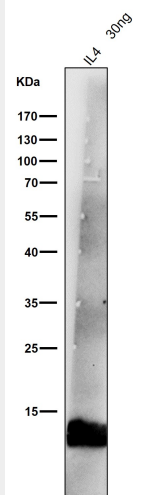
Anti-IL4 Rabbit Monoclonal Antibody - Protocols

Provided below are standard protocols that you may find useful for product applications.

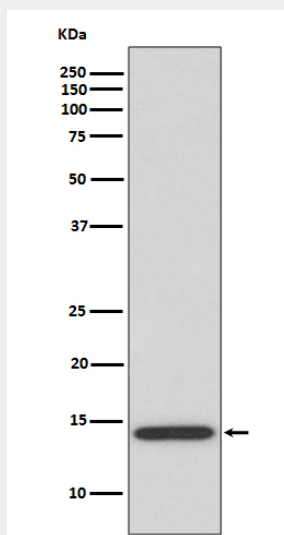
- [Western Blot](#)
- [Blocking Peptides](#)
- [Dot Blot](#)
- [Immunohistochemistry](#)
- [Immunofluorescence](#)
- [Immunoprecipitation](#)
- [Flow Cytometry](#)
- [Cell Culture](#)

Anti-IL4 Rabbit Monoclonal Antibody - Images





All lanes use the Antibody at 1:1W dilution for 1 hour at room temperature.



Western blot analysis of IL4 expression in human tonsil lysate.