

**Anti-AFP/Alpha 1 Fetoprotein Rabbit Monoclonal Antibody**  
Catalog # ABO13279**Specification****Anti-AFP/Alpha 1 Fetoprotein Rabbit Monoclonal Antibody - Product Information**

Application	WB, IHC, IF, ICC, IP, FC
Primary Accession	<a href="#">P02771</a>
Host	Rabbit
Isotype	Rabbit IgG
Reactivity	Human
Clonality	Monoclonal
Format	Liquid

**Description**

Anti-AFP/Alpha 1 Fetoprotein Rabbit Monoclonal Antibody . Tested in WB, IHC, ICC/IF, IP, Flow Cytometry applications. This antibody reacts with Human.

**Anti-AFP/Alpha 1 Fetoprotein Rabbit Monoclonal Antibody - Additional Information**

**Gene ID** 174

**Other Names**

Alpha-fetoprotein, Alpha-1-fetoprotein, Alpha-fetoglobulin, AFP, HPAFP

**Calculated MW**

68678 MW KDa

**Application Details**

WB 1:500-1:2000<br>IHC 1:50-1:200<br>ICC/IF 1:50-1:200<br>IP 1:50<br>FC 1:50

**Subcellular Localization**

Secreted.

**Tissue Specificity**

Plasma. Synthesized by the fetal liver and yolk sac.

**Contents**

Rabbit IgG in phosphate buffered saline, pH 7.4, 150mM NaCl, 0.02% sodium azide and 50% glycerol, 0.4-0.5mg/ml BSA.

**Immunogen**

A synthesized peptide derived from human AFP

**Purification**

Affinity-chromatography

**Storage**

**Store at -20°C for one year. For short term storage and frequent use, store at 4°C for up to one month. Avoid repeated freeze-thaw cycles.**

## Anti-AFP/Alpha 1 Fetoprotein Rabbit Monoclonal Antibody - Protein Information

**Name** AFP

**Synonyms** HPAFP

### Function

Binds copper, nickel, and fatty acids as well as, and bilirubin less well than, serum albumin. Only a small percentage (less than 2%) of the human AFP shows estrogen-binding properties.

### Cellular Location

Secreted.

### Tissue Location

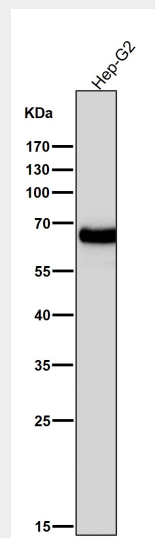
Plasma. Synthesized by the fetal liver and yolk sac

## Anti-AFP/Alpha 1 Fetoprotein Rabbit Monoclonal Antibody - Protocols

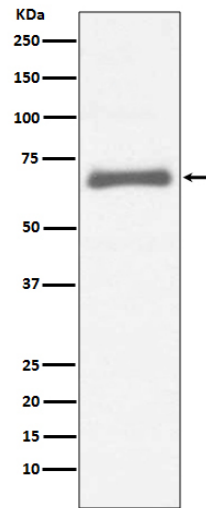
Provided below are standard protocols that you may find useful for product applications.

- [Western Blot](#)
- [Blocking Peptides](#)
- [Dot Blot](#)
- [Immunohistochemistry](#)
- [Immunofluorescence](#)
- [Immunoprecipitation](#)
- [Flow Cytometry](#)
- [Cell Culture](#)

## Anti-AFP/Alpha 1 Fetoprotein Rabbit Monoclonal Antibody - Images



All lanes use the Antibody at 1:5K dilution for 1 hour at room temperature.



Western blot analysis of AFP expression in HepG2 cell lysate.