

**Anti-VWF/Von Willebrand Factor Rabbit Monoclonal Antibody**  
Catalog # ABO13266**Specification****Anti-VWF/Von Willebrand Factor Rabbit Monoclonal Antibody - Product Information**

Application	WB, IHC
Primary Accession	<a href="#">P04275</a>
Host	Rabbit
Isotype	Rabbit IgG
Reactivity	Human
Clonality	Monoclonal
Format	Liquid

**Description**

Anti-VWF/Von Willebrand Factor Rabbit Monoclonal Antibody . Tested in WB, IHC applications. This antibody reacts with Human.

**Anti-VWF/Von Willebrand Factor Rabbit Monoclonal Antibody - Additional Information**

**Gene ID** 7450

**Other Names**

von Willebrand factor, vWF, von Willebrand antigen 2, von Willebrand antigen II, VWF, F8VWF

**Calculated MW**

309265 MW KDa

**Application Details**

WB 1:500-1:2000<br>IHC 1:50-1:200

**Subcellular Localization**

Secreted. Secreted, extracellular space, extracellular matrix. Localized to storage granules.

**Tissue Specificity**

Plasma.

**Contents**

Rabbit IgG in phosphate buffered saline, pH 7.4, 150mM NaCl, 0.02% sodium azide and 50% glycerol, 0.4-0.5mg/ml BSA.

**Immunogen**

A synthesized peptide derived from human VWF

**Purification**

Affinity-chromatography

**Storage**

**Store at -20°C for one year. For short term storage and frequent use, store at 4°C for up to one month. Avoid repeated freeze-thaw cycles.**

## Anti-VWF/Von Willebrand Factor Rabbit Monoclonal Antibody - Protein Information

**Name** VWF

**Synonyms** F8VWF

### Function

Important in the maintenance of hemostasis, it promotes adhesion of platelets to the sites of vascular injury by forming a molecular bridge between sub-endothelial collagen matrix and platelet- surface receptor complex GPIb-IX-V. Also acts as a chaperone for coagulation factor VIII, delivering it to the site of injury, stabilizing its heterodimeric structure and protecting it from premature clearance from plasma.

### Cellular Location

Secreted. Secreted, extracellular space, extracellular matrix. Note=Localized to storage granules

### Tissue Location

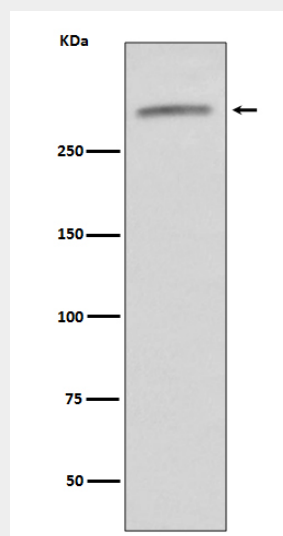
Plasma.

## Anti-VWF/Von Willebrand Factor Rabbit Monoclonal Antibody - Protocols

Provided below are standard protocols that you may find useful for product applications.

- [Western Blot](#)
- [Blocking Peptides](#)
- [Dot Blot](#)
- [Immunohistochemistry](#)
- [Immunofluorescence](#)
- [Immunoprecipitation](#)
- [Flow Cytometry](#)
- [Cell Culture](#)

## Anti-VWF/Von Willebrand Factor Rabbit Monoclonal Antibody - Images



Western blot analysis of VWF expression in human serum lysate.