

**Anti-p73 Rabbit Monoclonal Antibody**  
**Catalog # ABO13253****Specification**

---

**Anti-p73 Rabbit Monoclonal Antibody - Product Information**

Application	WB, IHC, IF, ICC
Primary Accession	<a href="#">O15350</a>
Host	Rabbit
Isotype	Rabbit IgG
Reactivity	Rat, Human, Mouse
Clonality	Monoclonal
Format	Liquid

**Description**

Anti-p73 Rabbit Monoclonal Antibody . Tested in WB, IHC, ICC/IF applications. This antibody reacts with Human, Mouse, Rat.

**Anti-p73 Rabbit Monoclonal Antibody - Additional Information**

**Gene ID** 7161

**Other Names**

Tumor protein p73, p53-like transcription factor, p53-related protein, TP73, P73

**Calculated MW**

69623 MW KDa

**Application Details**

WB 1:500-1:2000<br>IHC 1:50-1:200<br>ICC/IF 1:50-1:200

**Subcellular Localization**

Nucleus. Cytoplasm. Accumulates in the nucleus in response to DNA damage.

**Tissue Specificity**

Expressed in striatal neurons of patients with Huntington disease (at protein level). Brain, kidney, placenta, colon, heart, liver, spleen, skeletal muscle, prostate, thymus and pancreas. Highly expressed in fetal tissue..

**Contents**

Rabbit IgG in phosphate buffered saline, pH 7.4, 150mM NaCl, 0.02% sodium azide and 50% glycerol, 0.4-0.5mg/ml BSA.

**Immunogen**

A synthesized peptide derived from human p73

**Purification**

Affinity-chromatography

**Storage**

**Store at -20°C for one year. For short term storage and frequent use, store at 4°C for**

**up to one month. Avoid repeated  
freeze-thaw cycles.**

## **Anti-p73 Rabbit Monoclonal Antibody - Protein Information**

**Name** TP73

**Synonyms** P73

### **Function**

Participates in the apoptotic response to DNA damage. Isoforms containing the transactivation domain are pro-apoptotic, isoforms lacking the domain are anti-apoptotic and block the function of p53 and transactivating p73 isoforms. May be a tumor suppressor protein. Is an activator of FOXJ1 expression (By similarity). It is an essential factor for the positive regulation of lung ciliated cell differentiation (PubMed:<a href="http://www.uniprot.org/citations/34077761" target="\_blank">34077761</a>).

### **Cellular Location**

Nucleus. Cytoplasm. Note=Accumulates in the nucleus in response to DNA damage

### **Tissue Location**

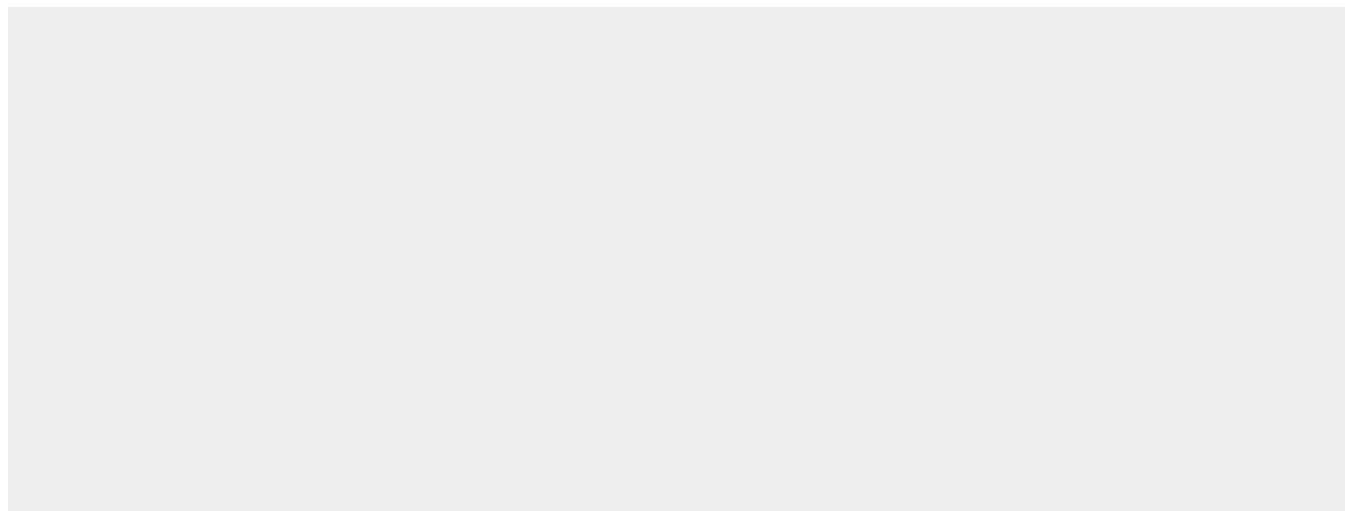
Expressed in striatal neurons of patients with Huntington disease (at protein level). Brain, kidney, placenta, colon, heart, liver, spleen, skeletal muscle, prostate, thymus and pancreas Highly expressed in fetal tissue. Expressed in the respiratory epithelium (PubMed:34077761).

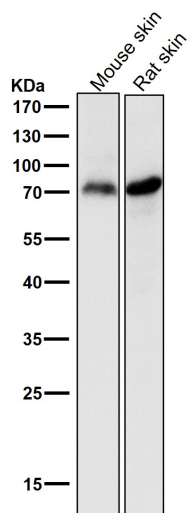
## **Anti-p73 Rabbit Monoclonal Antibody - Protocols**

Provided below are standard protocols that you may find useful for product applications.

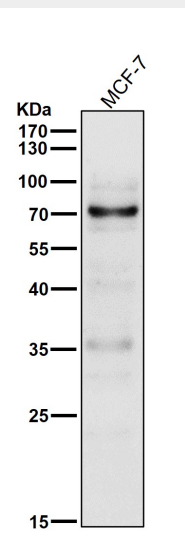
- [Western Blot](#)
- [Blocking Peptides](#)
- [Dot Blot](#)
- [Immunohistochemistry](#)
- [Immunofluorescence](#)
- [Immunoprecipitation](#)
- [Flow Cytometry](#)
- [Cell Culture](#)

## **Anti-p73 Rabbit Monoclonal Antibody - Images**

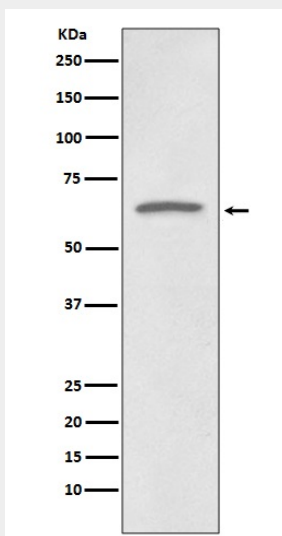




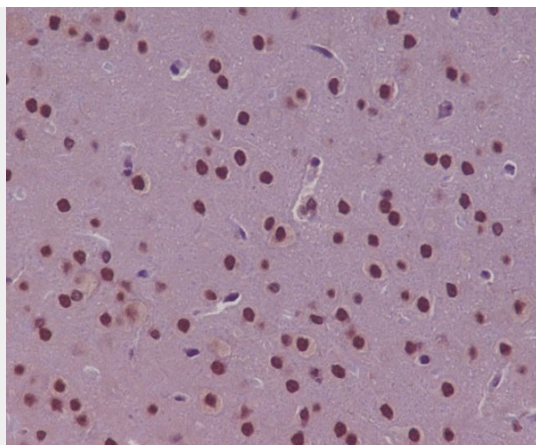
All lanes use the Antibody at 1:1K dilution for 1 hour at room temperature.



All lanes use the Antibody at 1:1K dilution for 1 hour at room temperature.



Western blot analysis of p73 expression in HeLa cell lysate.



Immunohistochemical analysis of paraffin-embedded rat brain, using p73 Antibody.