

Anti-5T4 TPBG Rabbit Monoclonal Antibody
Catalog # ABO13252

Specification

Anti-5T4 TPBG Rabbit Monoclonal Antibody - Product Information

Application	WB, IHC
Primary Accession	Q13641
Host	Rabbit
Isotype	Rabbit IgG
Reactivity	Human
Clonality	Monoclonal
Format	Liquid

Description

Anti-5T4 TPBG Rabbit Monoclonal Antibody . Tested in WB, IHC applications. This antibody reacts with Human.

Anti-5T4 TPBG Rabbit Monoclonal Antibody - Additional Information

Gene ID 7162

Other Names

Trophoblast glycoprotein, 5T4 oncofetal antigen, 5T4 oncofetal trophoblast glycoprotein, 5T4 oncotrophoblast glycoprotein, M6P1, Wnt-activated inhibitory factor 1, WAIF1, TPBG, 5T4

Calculated MW

46032 MW KDa

Application Details

WB 1:500-1:1000
IHC 1:50-1:200

Subcellular Localization

Cell membrane ; Single-pass type I membrane protein.

Tissue Specificity

Expressed by all types of trophoblasts as early as 9 weeks of development. Specific for trophoblastic cells except for amniotic epithelium. In adult tissues, the expression is limited to a few epithelial cell types but is found on a variety of carcinoma.

Contents

Rabbit IgG in phosphate buffered saline, pH 7.4, 150mM NaCl, 0.02% sodium azide and 50% glycerol, 0.4-0.5mg/ml BSA.

Immunogen

A synthesized peptide derived from human 5T4

Purification

Affinity-chromatography

Storage

Store at -20°C for one year. For short term

storage and frequent use, store at 4°C for up to one month. Avoid repeated freeze-thaw cycles.

Anti-5T4 TPBG Rabbit Monoclonal Antibody - Protein Information

Name TPBG

Synonyms 5T4

Function

May function as an inhibitor of Wnt/beta-catenin signaling by indirectly interacting with LRP6 and blocking Wnt3a-dependent LRP6 internalization.

Cellular Location

Cell membrane; Single-pass type I membrane protein

Tissue Location

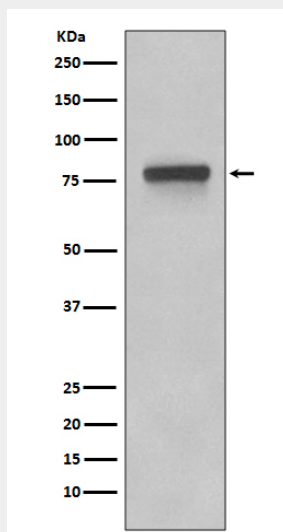
Expressed by all types of trophoblasts as early as 9 weeks of development. Specific for trophoblastic cells except for amniotic epithelium. In adult tissues, the expression is limited to a few epithelial cell types but is found on a variety of carcinoma

Anti-5T4 TPBG Rabbit Monoclonal Antibody - Protocols

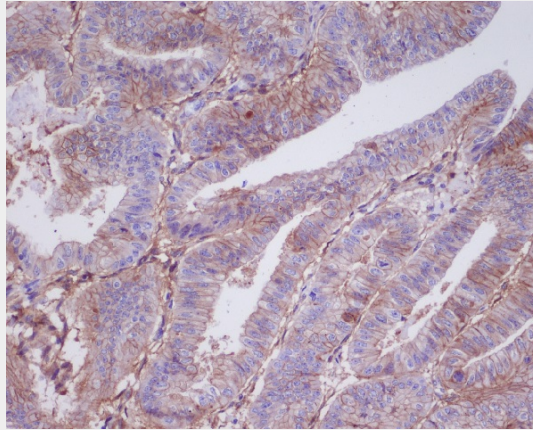
Provided below are standard protocols that you may find useful for product applications.

- [Western Blot](#)
- [Blocking Peptides](#)
- [Dot Blot](#)
- [Immunohistochemistry](#)
- [Immunofluorescence](#)
- [Immunoprecipitation](#)
- [Flow Cytometry](#)
- [Cell Culture](#)

Anti-5T4 TPBG Rabbit Monoclonal Antibody - Images



Western blot analysis of 5T4 expression in Caco-2 cell lysates.



Immunohistochemical analysis of paraffin-embedded human uterine cancer, using 5T4 Antibody.