

Anti-5T4 TPBG Rabbit Monoclonal Antibody
Catalog # ABO13237

Specification

Anti-5T4 TPBG Rabbit Monoclonal Antibody - Product Information

| | |
|-------------------|------------------------|
| Application | WB, IP |
| Primary Accession | Q13641 |
| Host | Rabbit |
| Isotype | Rabbit IgG |
| Reactivity | Rat, Human, Mouse |
| Clonality | Monoclonal |
| Format | Liquid |

Description

Anti-5T4 TPBG Rabbit Monoclonal Antibody . Tested in WB, IP applications. This antibody reacts with Human, Mouse, Rat.

Anti-5T4 TPBG Rabbit Monoclonal Antibody - Additional Information

Gene ID 7162

Other Names

Trophoblast glycoprotein, 5T4 oncofetal antigen, 5T4 oncofetal trophoblast glycoprotein, 5T4 oncotrophoblast glycoprotein, M6P1, Wnt-activated inhibitory factor 1, WAIF1, TPBG, 5T4

Calculated MW

46032 MW KDa

Application Details

WB 1:500-1:2000
IP 1:50

Subcellular Localization

Cell membrane ; Single-pass type I membrane protein.

Tissue Specificity

Expressed by all types of trophoblasts as early as 9 weeks of development. Specific for trophoblastic cells except for amniotic epithelium. In adult tissues, the expression is limited to a few epithelial cell types but is found on a variety of carcinoma.

Contents

Rabbit IgG in phosphate buffered saline, pH 7.4, 150mM NaCl, 0.02% sodium azide and 50% glycerol, 0.4-0.5mg/ml BSA.

Immunogen

A synthesized peptide derived from human 5T4

Purification

Affinity-chromatography

Storage

Store at -20°C for one year. For short term

storage and frequent use, store at 4°C for up to one month. Avoid repeated freeze-thaw cycles.

Anti-5T4 TPBG Rabbit Monoclonal Antibody - Protein Information

Name TPBG

Synonyms 5T4

Function

May function as an inhibitor of Wnt/beta-catenin signaling by indirectly interacting with LRP6 and blocking Wnt3a-dependent LRP6 internalization.

Cellular Location

Cell membrane; Single-pass type I membrane protein

Tissue Location

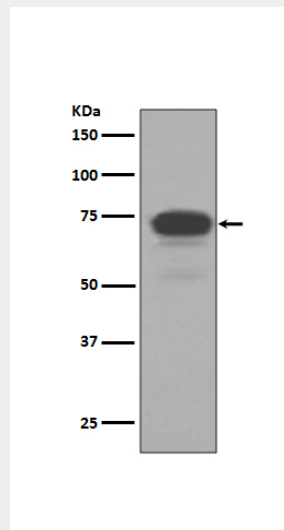
Expressed by all types of trophoblasts as early as 9 weeks of development. Specific for trophoblastic cells except for amniotic epithelium. In adult tissues, the expression is limited to a few epithelial cell types but is found on a variety of carcinoma

Anti-5T4 TPBG Rabbit Monoclonal Antibody - Protocols

Provided below are standard protocols that you may find useful for product applications.

- [Western Blot](#)
- [Blocking Peptides](#)
- [Dot Blot](#)
- [Immunohistochemistry](#)
- [Immunofluorescence](#)
- [Immunoprecipitation](#)
- [Flow Cytometry](#)
- [Cell Culture](#)

Anti-5T4 TPBG Rabbit Monoclonal Antibody - Images



Western blot analysis of 5T4 expression in MCF-7 cell lysate.