

**Anti-Bim BCL2L11 Rabbit Monoclonal Antibody**  
Catalog # ABO13236

**Specification**

---

**Anti-Bim BCL2L11 Rabbit Monoclonal Antibody - Product Information**

Application	WB, IHC, IF, ICC, IP, FC
Primary Accession	<a href="#">O43521</a>
Host	Rabbit
Isotype	Rabbit IgG
Reactivity	Rat, Human, Mouse
Clonality	Monoclonal
Format	Liquid

**Description**

Anti-Bim BCL2L11 Rabbit Monoclonal Antibody . Tested in WB, IHC, ICC/IF, IP, Flow Cytometry applications. This antibody reacts with Human, Mouse, Rat.

**Anti-Bim BCL2L11 Rabbit Monoclonal Antibody - Additional Information**

**Gene ID** 10018

**Other Names**

Bcl-2-like protein 11, Bcl2-L-11, Bcl2-interacting mediator of cell death, BCL2L11, BIM

**Calculated MW**

22171 MW KDa

**Application Details**

WB 1:500-1:1000<br>IHC 1:50-1:100<br>ICC/IF 1:50-1:100<br>IP 1:40<br>FC 1:50

**Subcellular Localization**

Endomembrane system ; Peripheral membrane protein. Associated with intracytoplasmic membranes..

**Tissue Specificity**

Isoform BimEL, isoform BimL and isoform BimS are the predominant isoforms and are ubiquitously expressed with a tissue-specific variation. Isoform Bim-gamma is most abundantly expressed in small intestine and colon, and in lower levels in spleen, prostate, testis, heart, liver and kidney..

**Contents**

Rabbit IgG in phosphate buffered saline, pH 7.4, 150mM NaCl, 0.02% sodium azide and 50% glycerol, 0.4-0.5mg/ml BSA.

**Immunogen**

A synthesized peptide derived from human Bim

**Purification**

Affinity-chromatography

Storage

**Store at -20°C for one year. For short term**

**storage and frequent use, store at 4°C for up to one month. Avoid repeated freeze-thaw cycles.**

## **Anti-Bim BCL2L11 Rabbit Monoclonal Antibody - Protein Information**

**Name** BCL2L11

**Synonyms** BIM

### **Function**

Induces apoptosis and anoikis. Isoform BimL is more potent than isoform BimEL. Isoform Bim-alpha1, isoform Bim-alpha2 and isoform Bim-alpha3 induce apoptosis, although less potent than isoform BimEL, isoform BimL and isoform BimS. Isoform Bim-gamma induces apoptosis. Isoform Bim-alpha3 induces apoptosis possibly through a caspase- mediated pathway. Isoform BimAC and isoform BimABC lack the ability to induce apoptosis.

### **Cellular Location**

Endomembrane system; Peripheral membrane protein. Note=Associated with intracytoplasmic membranes. [Isoform BimL]: Mitochondrion. [Isoform Bim-alpha1]: Mitochondrion.

### **Tissue Location**

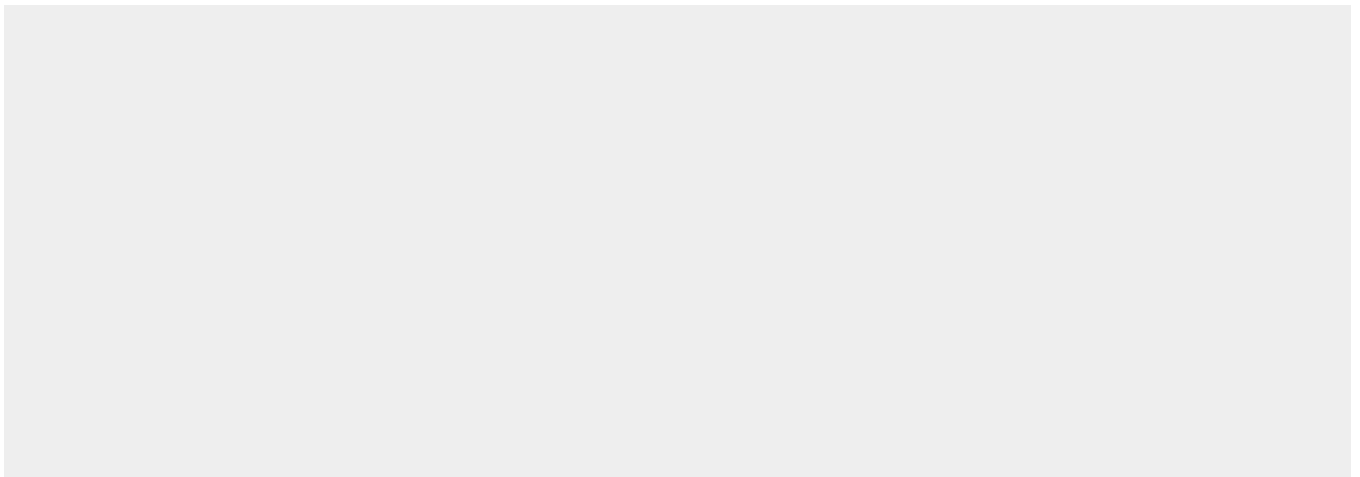
Isoform BimEL, isoform BimL and isoform BimS are the predominant isoforms and are widely expressed with tissue-specific variation. Isoform Bim-gamma is most abundantly expressed in small intestine and colon, and in lower levels in spleen, prostate, testis, heart, liver and kidney.

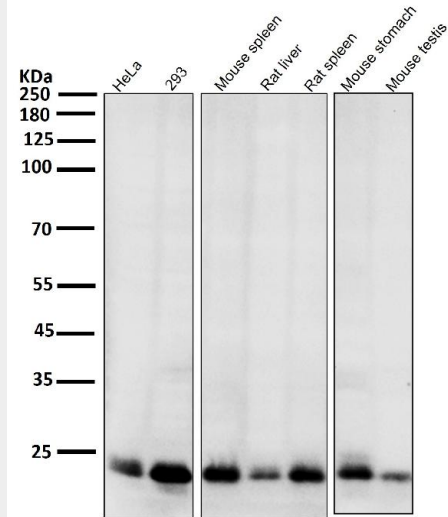
## **Anti-Bim BCL2L11 Rabbit Monoclonal Antibody - Protocols**

Provided below are standard protocols that you may find useful for product applications.

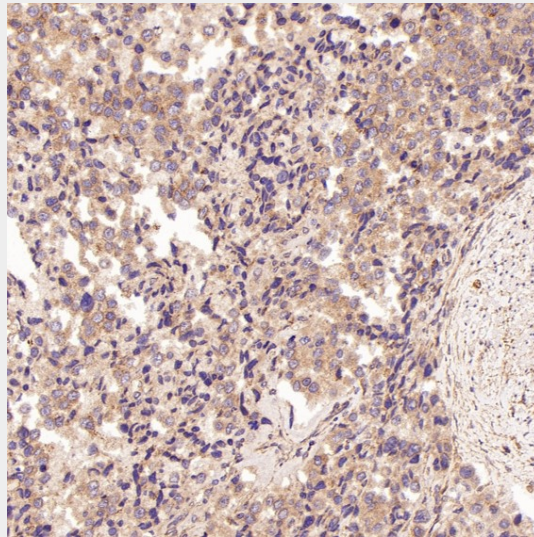
- [Western Blot](#)
- [Blocking Peptides](#)
- [Dot Blot](#)
- [Immunohistochemistry](#)
- [Immunofluorescence](#)
- [Immunoprecipitation](#)
- [Flow Cytometry](#)
- [Cell Culture](#)

## **Anti-Bim BCL2L11 Rabbit Monoclonal Antibody - Images**

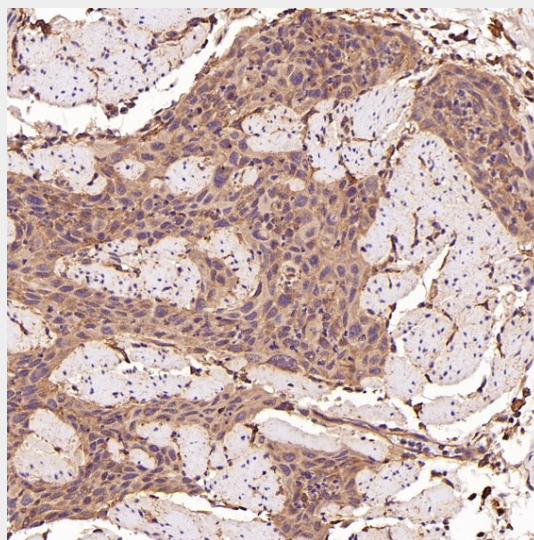




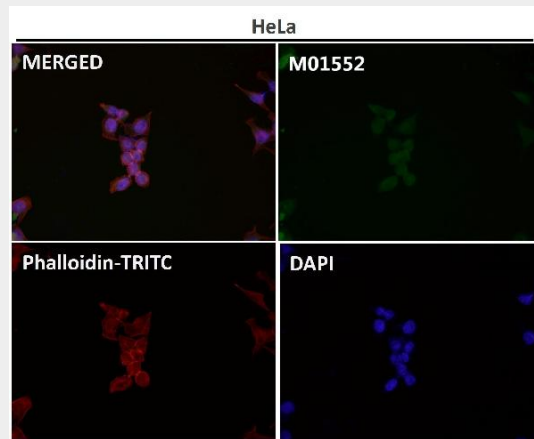
All lanes use the Antibody at 1:1W dilution for 1 hour at room temperature.



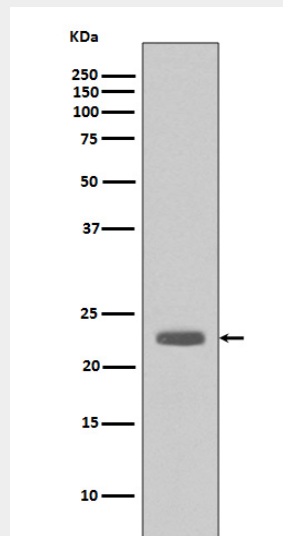
Immunohistochemical analysis of paraffin-embedded Human prostate cancer, using the Antibody at 1:50 dilution.



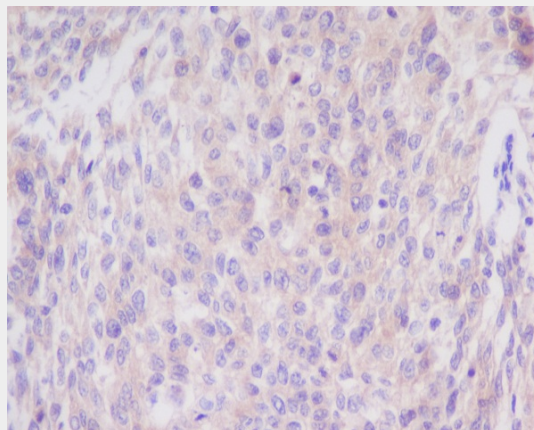
Immunohistochemical analysis of paraffin-embedded Human esophageal carcinoma, using the Antibody at 1:50 dilution.



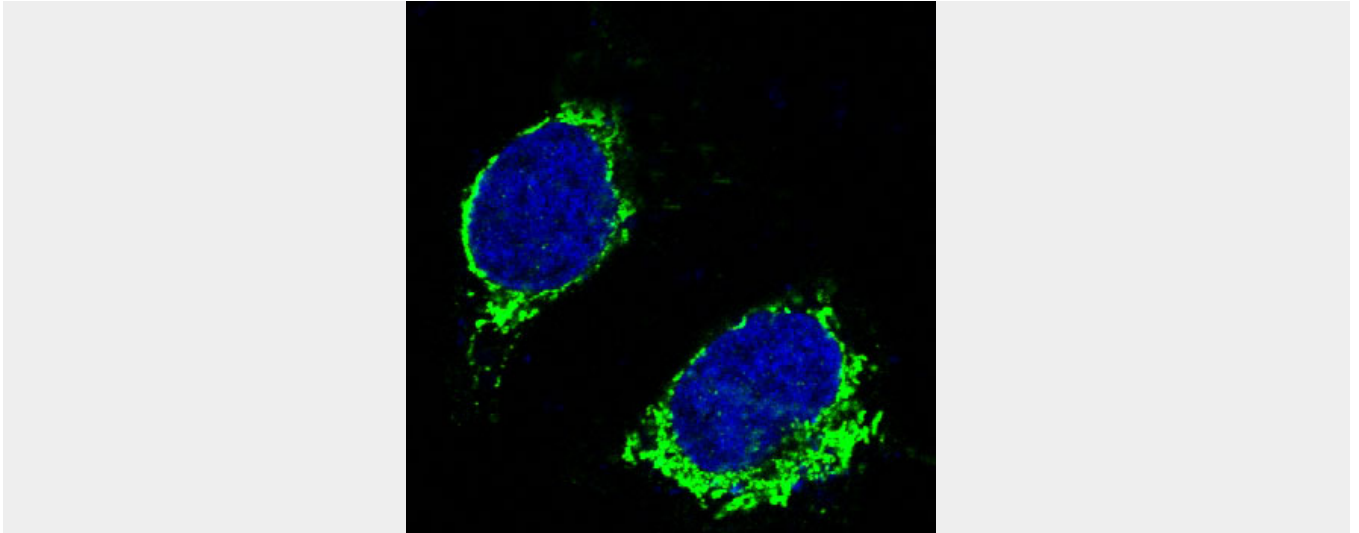
Immunofluorescent analysis using the Antibody at 1:150 dilution.



Western blot analysis of Bim expression in A431 cell lysate.



Immunohistochemical analysis of paraffin-embedded human cervix cancer, using Bim Antibody.



Immunofluorescent analysis of Raji cells, using Bim Antibody.