

**Anti-PD1 PDCD1 Rabbit Monoclonal Antibody**  
Catalog # ABO13235

**Specification**

---

**Anti-PD1 PDCD1 Rabbit Monoclonal Antibody - Product Information**

Application	IHC
Primary Accession	<a href="#">Q15116</a>
Host	Rabbit
Isotype	Rabbit IgG
Reactivity	Human
Clonality	Monoclonal
Format	Liquid

**Description**

Anti-PD1 PDCD1 Rabbit Monoclonal Antibody . Tested in IHC application. This antibody reacts with Human.

**Anti-PD1 PDCD1 Rabbit Monoclonal Antibody - Additional Information**

**Gene ID** 5133

**Other Names**

Programmed cell death protein 1, Protein PD-1, hPD-1, CD279, PDCD1  
{ECO:0000303|PubMed:7851902, ECO:0000312|HGNC:HGNC:8760}

**Calculated MW**

31647 MW KDa

**Application Details**

IHC 1:50-1:200

**Subcellular Localization**

Membrane; Single-pass type I membrane protein.

**Contents**

Rabbit IgG in phosphate buffered saline, pH 7.4, 150mM NaCl, 0.02% sodium azide and 50% glycerol, 0.4-0.5mg/ml BSA.

**Immunogen**

A synthesized peptide derived from human PD1

**Purification**

Affinity-chromatography

**Storage**

**Store at -20°C for one year. For short term storage and frequent use, store at 4°C for up to one month. Avoid repeated freeze-thaw cycles.**

**Anti-PD1 PDCD1 Rabbit Monoclonal Antibody - Protein Information**

**Name** PDCD1 {ECO:0000303|PubMed:7851902, ECO:0000312|HGNC:HGNC:8760}

### Function

Inhibitory receptor on antigen activated T-cells that plays a critical role in induction and maintenance of immune tolerance to self (PubMed:<a href="http://www.uniprot.org/citations/21276005" target="\_blank">21276005</a>). Delivers inhibitory signals upon binding to ligands CD274/PDCD1L1 and CD273/PDCD1LG2 (PubMed:<a href="http://www.uniprot.org/citations/21276005" target="\_blank">21276005</a>). Following T-cell receptor (TCR) engagement, PDCD1 associates with CD3-TCR in the immunological synapse and directly inhibits T-cell activation (By similarity). Suppresses T-cell activation through the recruitment of PTPN11/SHP-2: following ligand-binding, PDCD1 is phosphorylated within the ITSM motif, leading to the recruitment of the protein tyrosine phosphatase PTPN11/SHP-2 that mediates dephosphorylation of key TCR proximal signaling molecules, such as ZAP70, PRKCQ/PKCtheta and CD247/CD3zeta (By similarity).

### Cellular Location

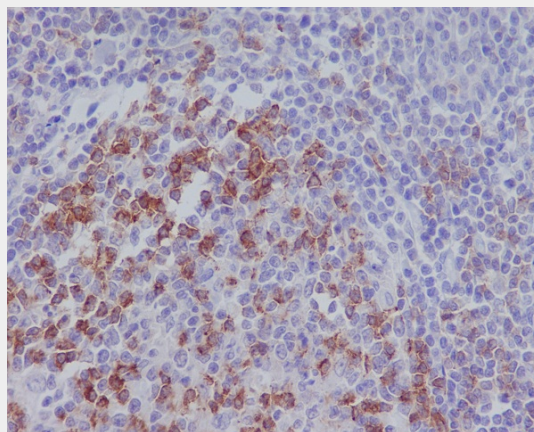
Cell membrane; Single-pass type I membrane protein

### Anti-PD1 PDCD1 Rabbit Monoclonal Antibody - Protocols

Provided below are standard protocols that you may find useful for product applications.

- [Western Blot](#)
- [Blocking Peptides](#)
- [Dot Blot](#)
- [Immunohistochemistry](#)
- [Immunofluorescence](#)
- [Immunoprecipitation](#)
- [Flow Cytometry](#)
- [Cell Culture](#)

### Anti-PD1 PDCD1 Rabbit Monoclonal Antibody - Images



Immunohistochemical analysis of paraffin-embedded human tonsil, using PD1 Antibody.