

**Anti-Tau MAPT Rabbit Monoclonal Antibody**  
Catalog # ABO13225**Specification****Anti-Tau MAPT Rabbit Monoclonal Antibody - Product Information**

Application	WB, IHC, IP
Primary Accession	<a href="#">P10636</a>
Host	Rabbit
Isotype	Rabbit IgG
Reactivity	Rat, Human, Mouse
Clonality	Monoclonal
Format	Liquid

**Description**

Anti-Tau MAPT Rabbit Monoclonal Antibody . Tested in WB, IHC, IP applications. This antibody reacts with Human, Mouse, Rat.

**Anti-Tau MAPT Rabbit Monoclonal Antibody - Additional Information**

**Gene ID** 4137

**Other Names**

Microtubule-associated protein tau, Neurofibrillary tangle protein, Paired helical filament-tau, PHF-tau, MAPT ([http://www.genenames.org/cgi-bin/gene\\_symbol\\_report?hgnc\\_id=6893](http://www.genenames.org/cgi-bin/gene_symbol_report?hgnc_id=6893) target="\_blank">HGNC:6893</a>), MAPTL, MTBT1, TAU

**Calculated MW**

78928 MW KDa

**Application Details**

WB 1:500-1:2000<br>IHC 1:100-1:500<br>IP 1:50

**Subcellular Localization**

Cytoplasm, cytosol. Cell membrane ; Peripheral membrane protein ; Cytoplasmic side. Cytoplasm, cytoskeleton. Cell projection, axon. Mostly found in the axons of neurons, in the cytosol and in association with plasma membrane components.

**Tissue Specificity**

Expressed in neurons. Isoform PNS-tau is expressed in the peripheral nervous system while the others are expressed in the central nervous system.

**Contents**

Rabbit IgG in phosphate buffered saline, pH 7.4, 150mM NaCl, 0.02% sodium azide and 50% glycerol, 0.4-0.5mg/ml BSA.

**Immunogen**

A synthesized peptide derived from human Tau

**Purification**

Affinity-chromatography

**Storage**

**Store at -20°C for one year. For short term storage and frequent use, store at 4°C for up to one month. Avoid repeated freeze-thaw cycles.**

**Anti-Tau MAPT Rabbit Monoclonal Antibody - Protein Information**

**Name** MAPT ([HGNC:6893](#))

**Synonyms** MAPTL, MTBT1, TAU

**Function**

Promotes microtubule assembly and stability, and might be involved in the establishment and maintenance of neuronal polarity (PubMed:[21985311](http://www.uniprot.org/citations/21985311)). The C-terminus binds axonal microtubules while the N-terminus binds neural plasma membrane components, suggesting that tau functions as a linker protein between both (PubMed:[21985311](http://www.uniprot.org/citations/21985311), PubMed:[32961270](http://www.uniprot.org/citations/32961270)). Axonal polarity is predetermined by TAU/MAPT localization (in the neuronal cell) in the domain of the cell body defined by the centrosome. The short isoforms allow plasticity of the cytoskeleton whereas the longer isoforms may preferentially play a role in its stabilization.

**Cellular Location**

Cytoplasm, cytosol. Cell membrane; Peripheral membrane protein; Cytoplasmic side. Cytoplasm, cytoskeleton. Cell projection, axon. Cell projection, dendrite. Secreted Note=Mostly found in the axons of neurons, in the cytosol and in association with plasma membrane components (PubMed:10747907). Can be secreted; the secretion is dependent on protein unfolding and facilitated by the cargo receptor TMED10; it results in protein translocation from the cytoplasm into the ERGIC (endoplasmic reticulum- Golgi intermediate compartment) followed by vesicle entry and secretion (PubMed:32272059).

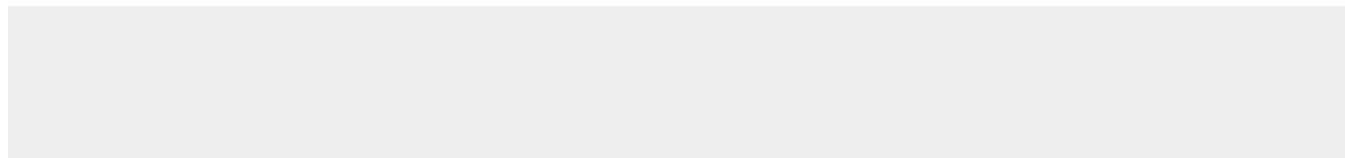
**Tissue Location**

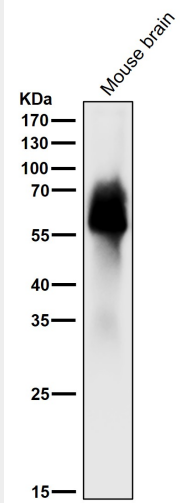
Expressed in neurons. Isoform PNS-tau is expressed in the peripheral nervous system while the others are expressed in the central nervous system

**Anti-Tau MAPT Rabbit Monoclonal Antibody - Protocols**

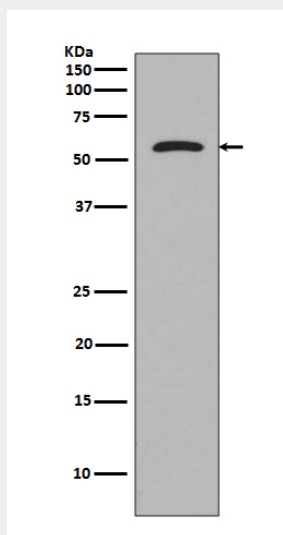
Provided below are standard protocols that you may find useful for product applications.

- [Western Blot](#)
- [Blocking Peptides](#)
- [Dot Blot](#)
- [Immunohistochemistry](#)
- [Immunofluorescence](#)
- [Immunoprecipitation](#)
- [Flow Cytometry](#)
- [Cell Culture](#)

**Anti-Tau MAPT Rabbit Monoclonal Antibody - Images**



All lanes use the Antibody at 1:1k dilution for 1 hour at room temperature.



Western blot analysis of Tau expression in SH-SY5Y cell lysate.